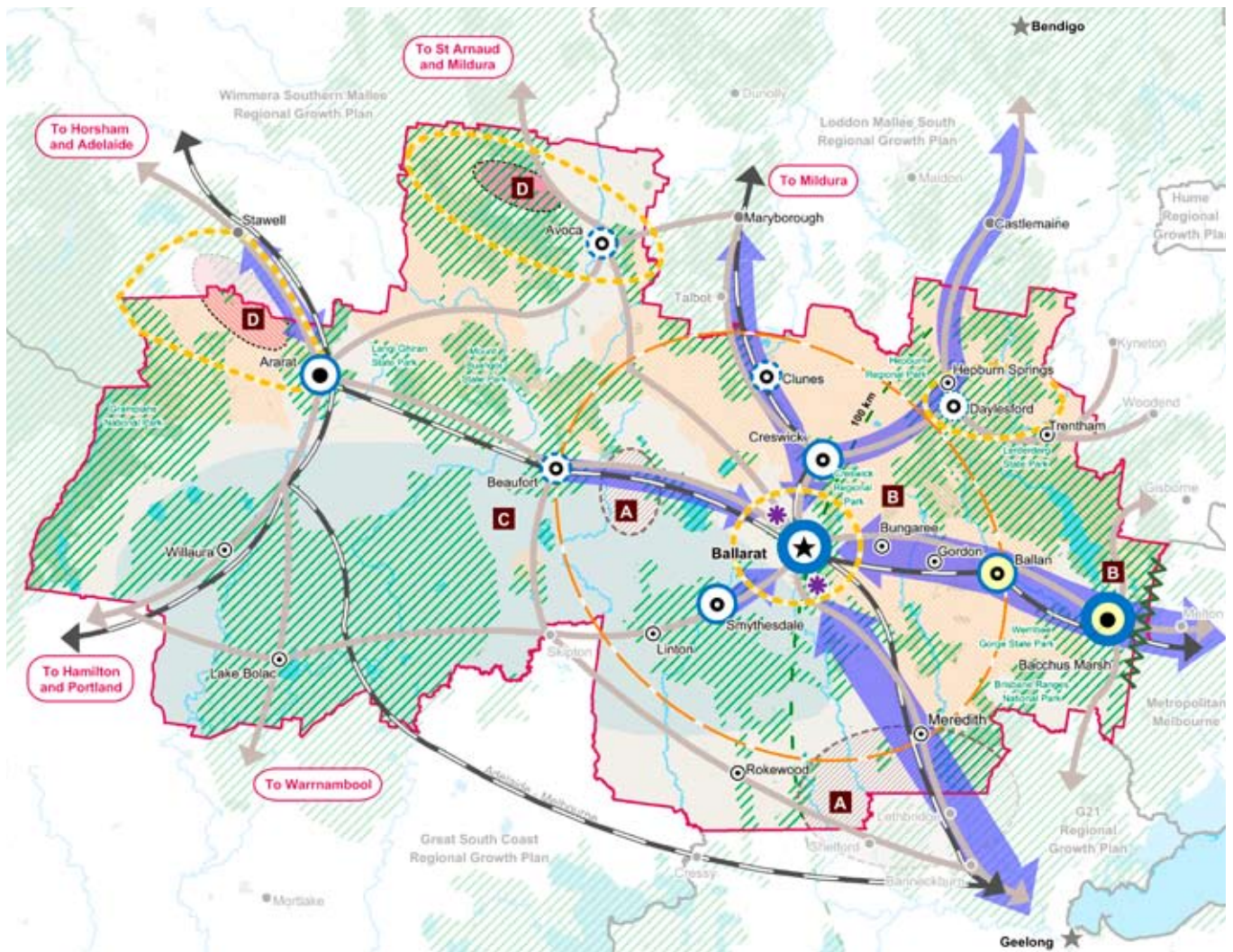


Figure 2 Regional Overview



**Settlement Network**

- ★ Ballarat - Regional city
- Regional centre
- Town
- ⦿ Small town
- ★ Regional city external to the region
- Settlement external to the region
- ⦿ Major growth
- ⦿ Medium growth
- ⦿ Support sustainable change
- ⦿ Contain growth
- Designated identified growth centre in Plan Melbourne
- ⦿ Settlement break

**Economic Development**

- ★ Regional employment assets in Ballarat
- ⦿ Key tourism precinct
- ⦿ Intensive agriculture
- ⦿ Horticulture
- ⦿ Broadacre cropping and grazing
- ⦿ Viticulture

**Melbourne and Ballarat Hinterlands**

- ⦿ Areas within 100 km of central Melbourne
- ⦿ Ballarat hinterland

**Connectivity**

- ➔ Key relationship
- ➔ Key road corridor
- ➔ Key rail corridor

**Environment**

- ⦿ Areas containing high value terrestrial habitat
- ⦿ Declared water supply catchment
- ⦿ Public land
- ⦿ Lakes and wetlands
- ⦿ Rivers

**Ballarat - Regional City**

Reinforce the role of Ballarat as the main centre for regional growth, services and employment. Focus major growth to the west. Support the development of major regional facilities and encourage development of the Central Business District as a vibrant alternative to Melbourne.

©The State of Victoria, Department of Transport, Planning and Local Infrastructure, 2014. The State of Victoria does not warrant the accuracy or completeness of information in the publication and any person using or relying upon such information does so on the basis that the State of Victoria shall bear no responsibility or liability whatsoever for any errors, faults, defects or omissions in the information.

Source: Central Highlands Regional Growth Plan 2014.

See Appendix 3 on page 264 for more information on the Regional Growth Plan