



## **A new play area is coming to the Victoria Park Inclusive Play Space**

An easy guide about changes being made to the play space this year

This flip book has been created to use as a learning tool. It will teach individuals what to expect when visiting the Victoria Park Inclusive Play Space while the new Sensory Friendly Stay and Play Zone is being built.

This book aims to provide information about:

1. Changes that will take place
2. What the changes may look like, sound like and feel like
3. The purpose of the new play zone.

You can also use the Victoria Park Inclusive Play Space flip book to share information about the existing play space and facilities.

This can be accessed here:

[https://www.ballarat.vic.gov.au/sites/default/files/2019-06/Victoria Park Inclusive Play Space social script.pdf](https://www.ballarat.vic.gov.au/sites/default/files/2019-06/Victoria_Park_Inclusive_Play_Space_social_script.pdf)







The Victoria Park Inclusive Play Space is getting a new play area.

It will be near the end of flying fox, behind the climbing net and go around to the garden beds.





I might see a new fence when I visit.

A fence will be put up around the new play area while it is being built.

The fences are here to keep me safe. I must stay away from the new fence.





Behind the fence I might see people who are working.

They will wear bright coloured tops or vests.



The workers will sometimes use machines for their work.

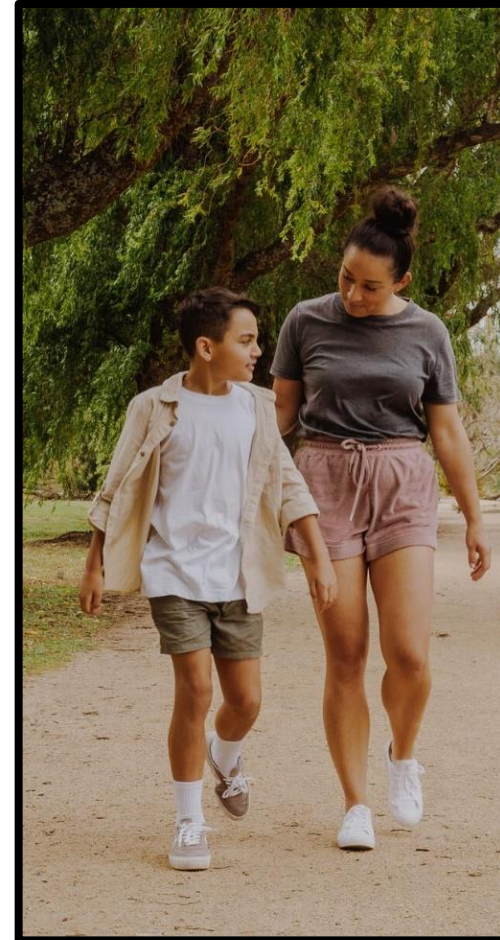
The machines can be noisy. I can wear ear protection or play away from this area if it is too loud.





It might be dusty when people are working.

I can play away from the area if there is dust in the air.



The Victoria Park Inclusive Playspace - Sensory Friendly Stay and Play Zone is being developed by City of Ballarat in partnership with the Victorian Government.

Project: Sensory Friendly Stay and Play Zone, Victoria Park Inclusive Playspace

Creating a sensory-friendly play zone that provides active recreation opportunities for people of all ages, genders, backgrounds, and abilities. Tailoring sensory experiences will enhance physical activity involvement and duration for everyone, especially benefiting people with disability and those with sensory requirements.

Total Project Cost: \$334,870

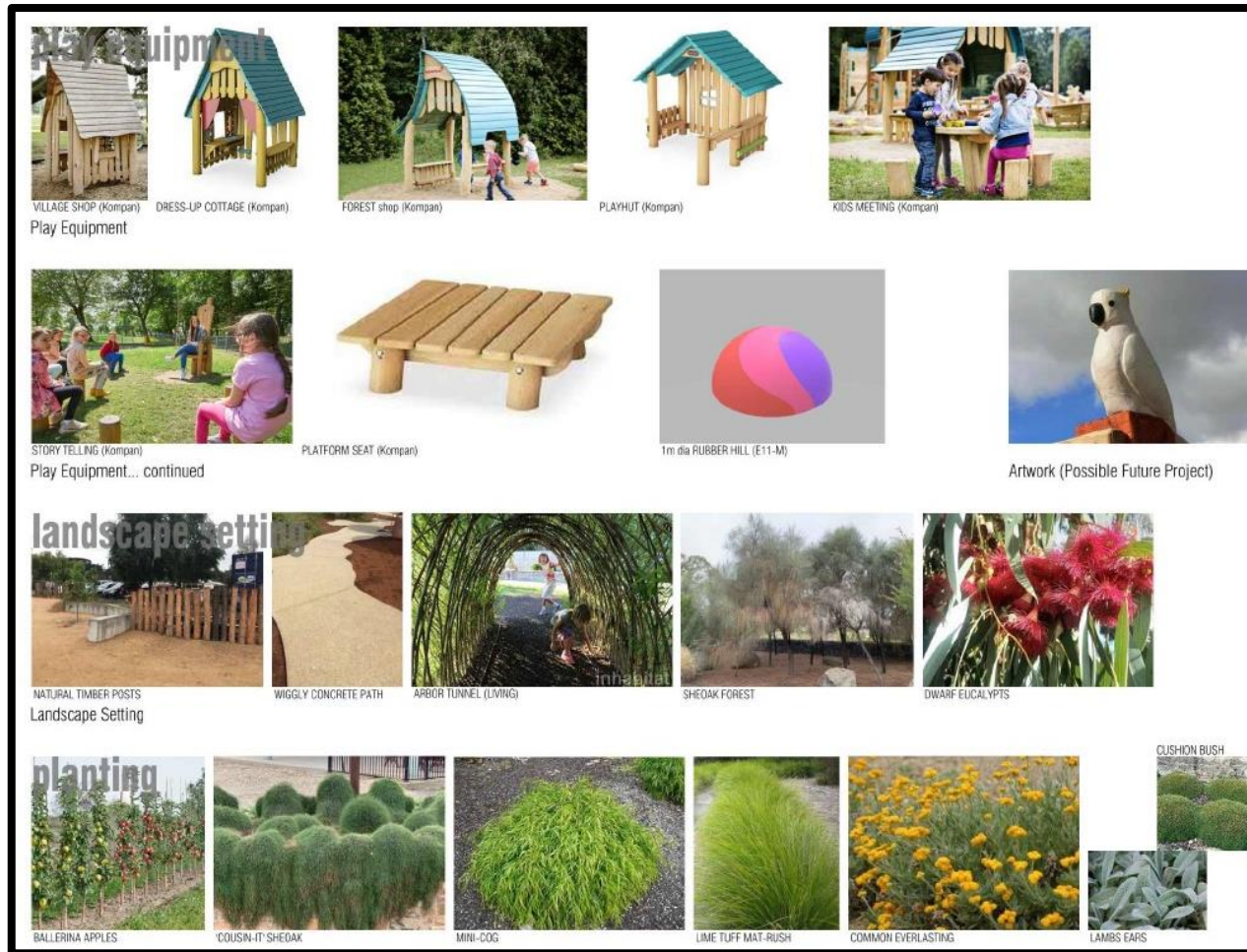
Information: [ballarat.vic.gov.au](http://ballarat.vic.gov.au)



The play space might look a little different each time I visit.

I can talk to someone if I feel worried. I can play where I feel safe and happy.



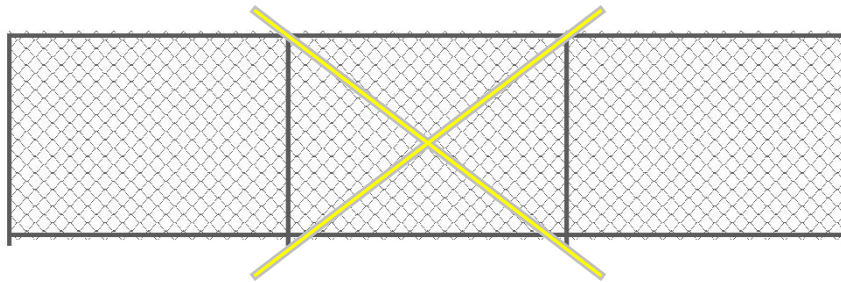


When it is finished the new play area will have seats, huts, paths, trees and plants. These photos give us some ideas about what some of these things might look like.





The new play area will be a place that I can go to that is quiet and safe.



I will know that it is safe to play there when the fences are gone.





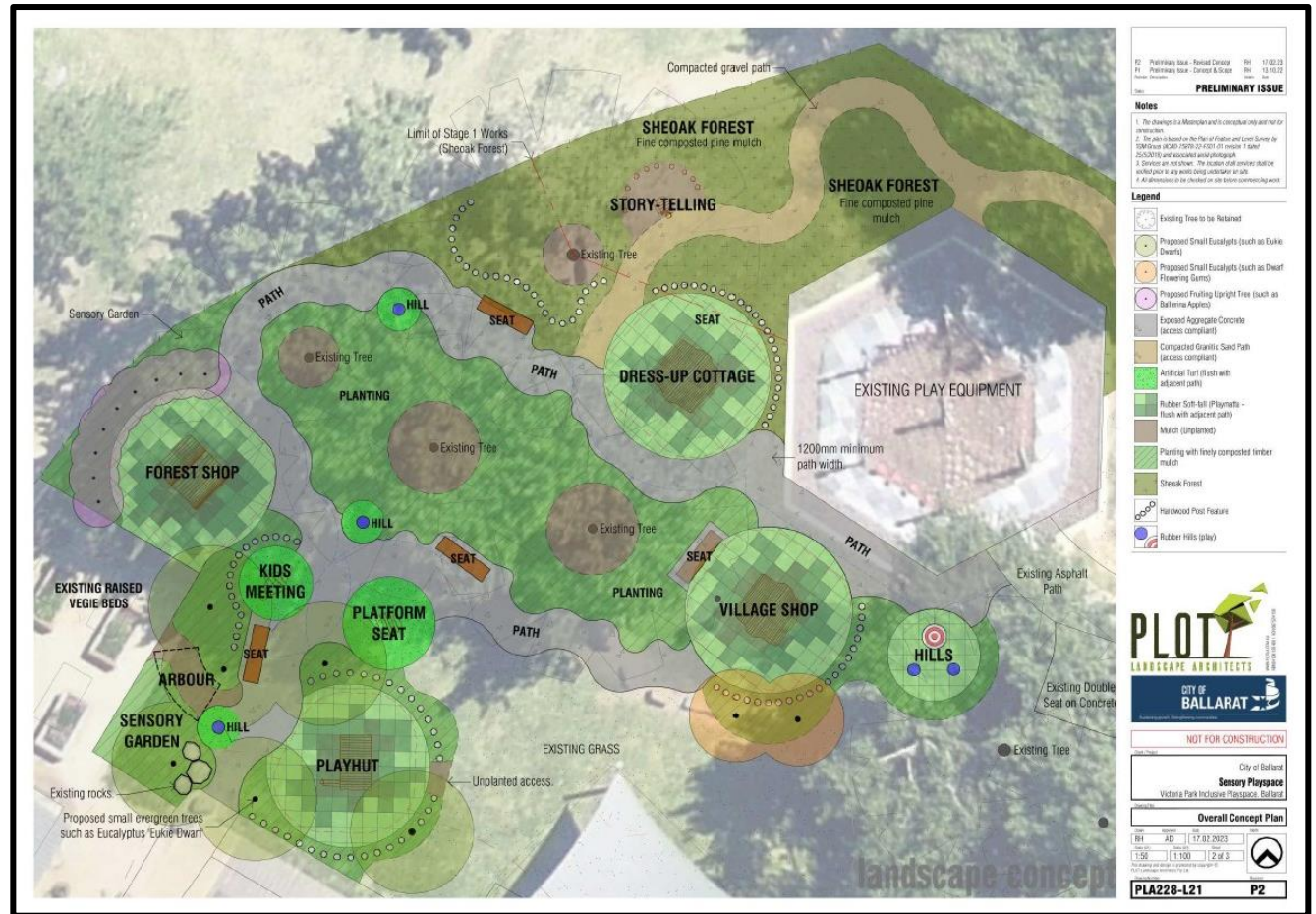
Here are some of the places that I can play while I am waiting for the new play area to be finished.



Contact information

**City of Ballarat**  
**25 Armstrong St South**  
**Ballarat 3350**

ph. 03 5320 5500



<https://www.ballarat.vic.gov.au/community/accessibility>