

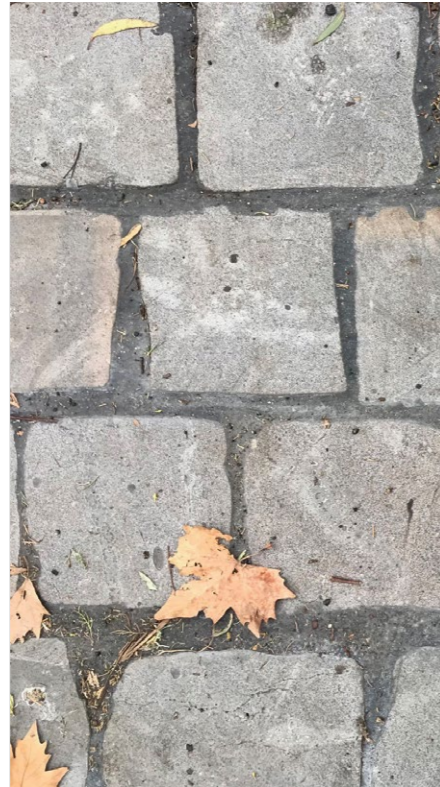
BRIDGE STREET

PAVEMENT STRATEGY



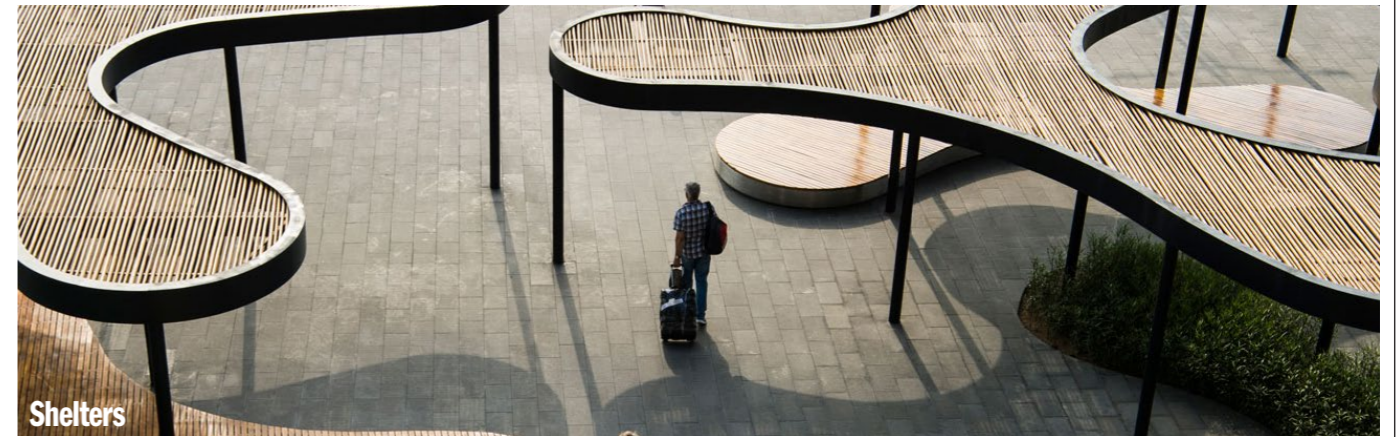
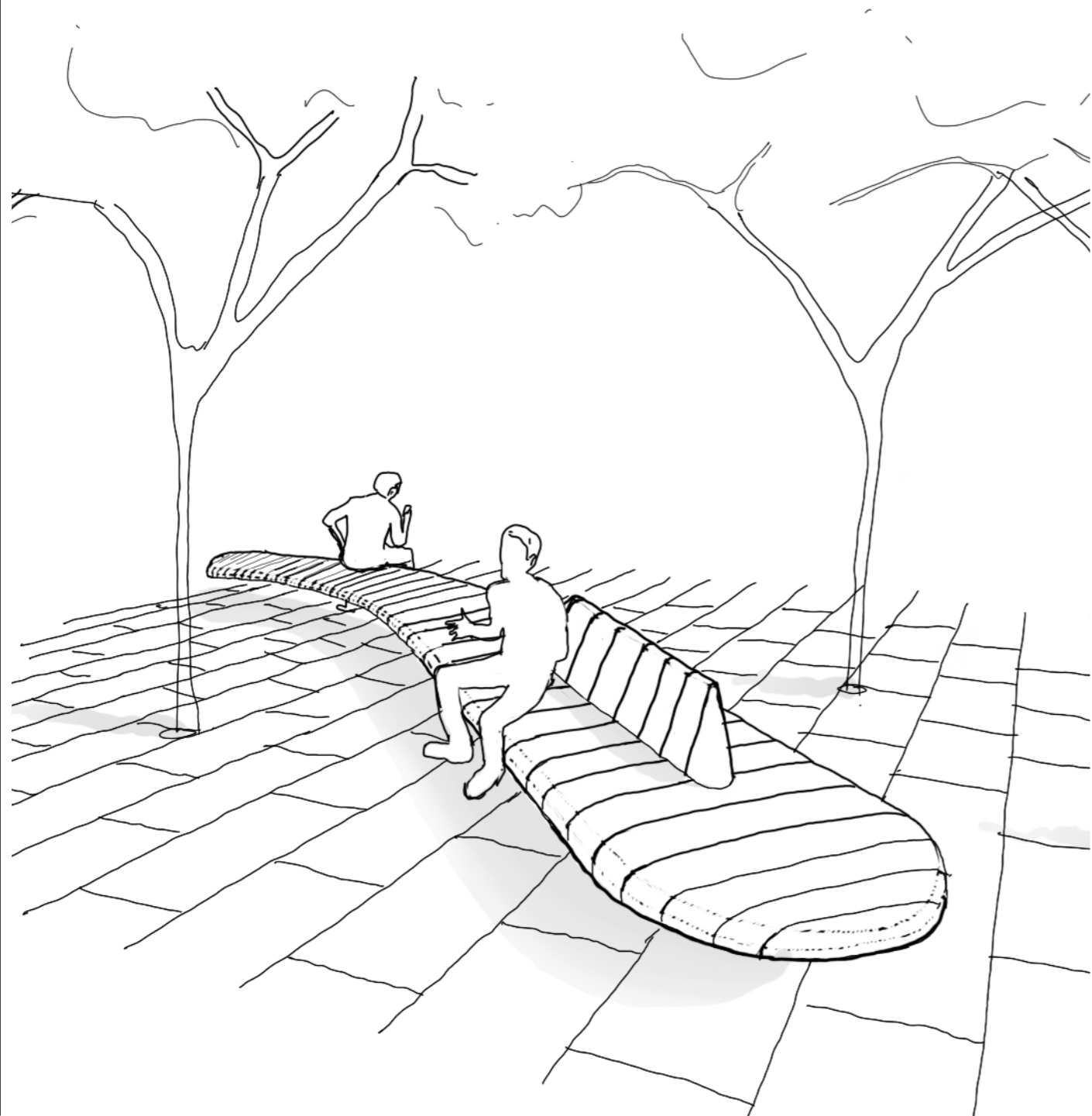
BRIDGE STREET

MATERIAL EXPRESSION



BRIDGE STREET

FURNITURE AND DETAILING

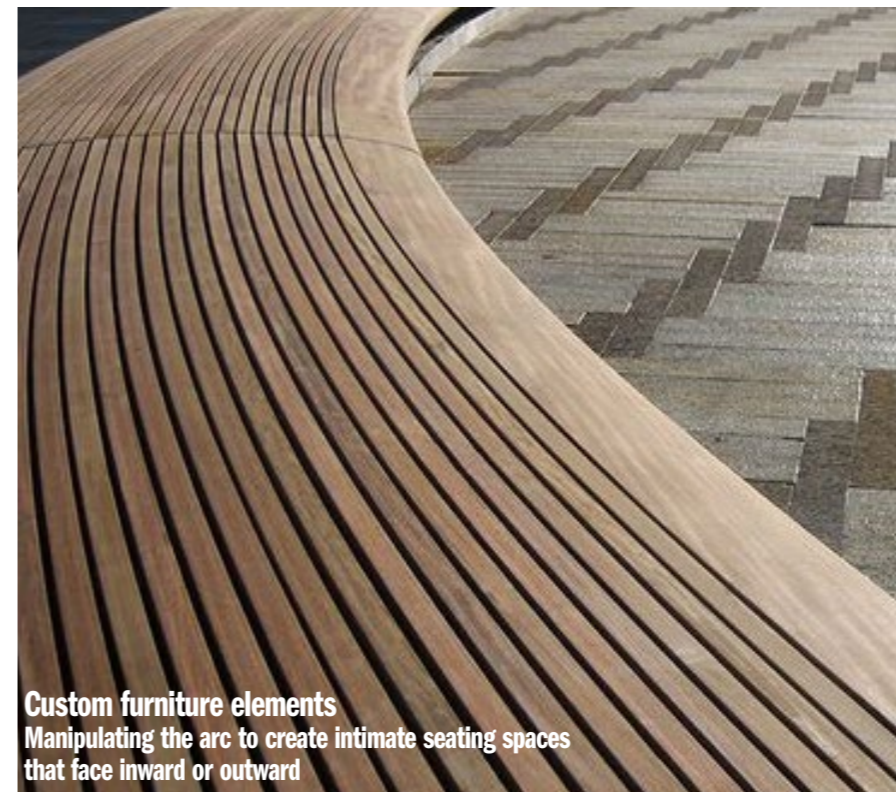


Shelters



Materiality

High quality material selection that provides warmth to the precinct and reference's Ballarat's sandstone and granite below



Custom furniture elements

Manipulating the arc to create intimate seating spaces that face inward or outward



BRIDGE STREET

VIEW EAST AT GRENVILLE STREET ENTRANCE

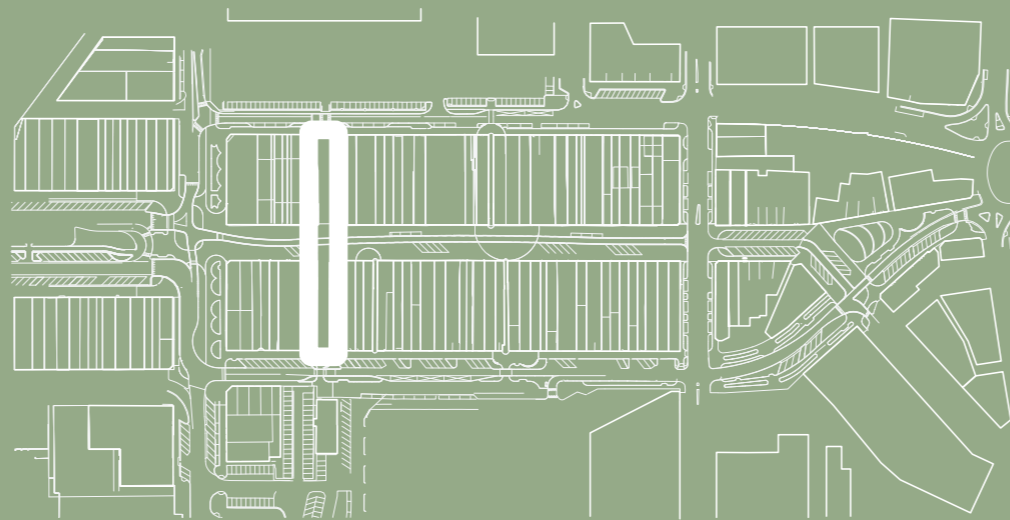


BRIDGE STREET

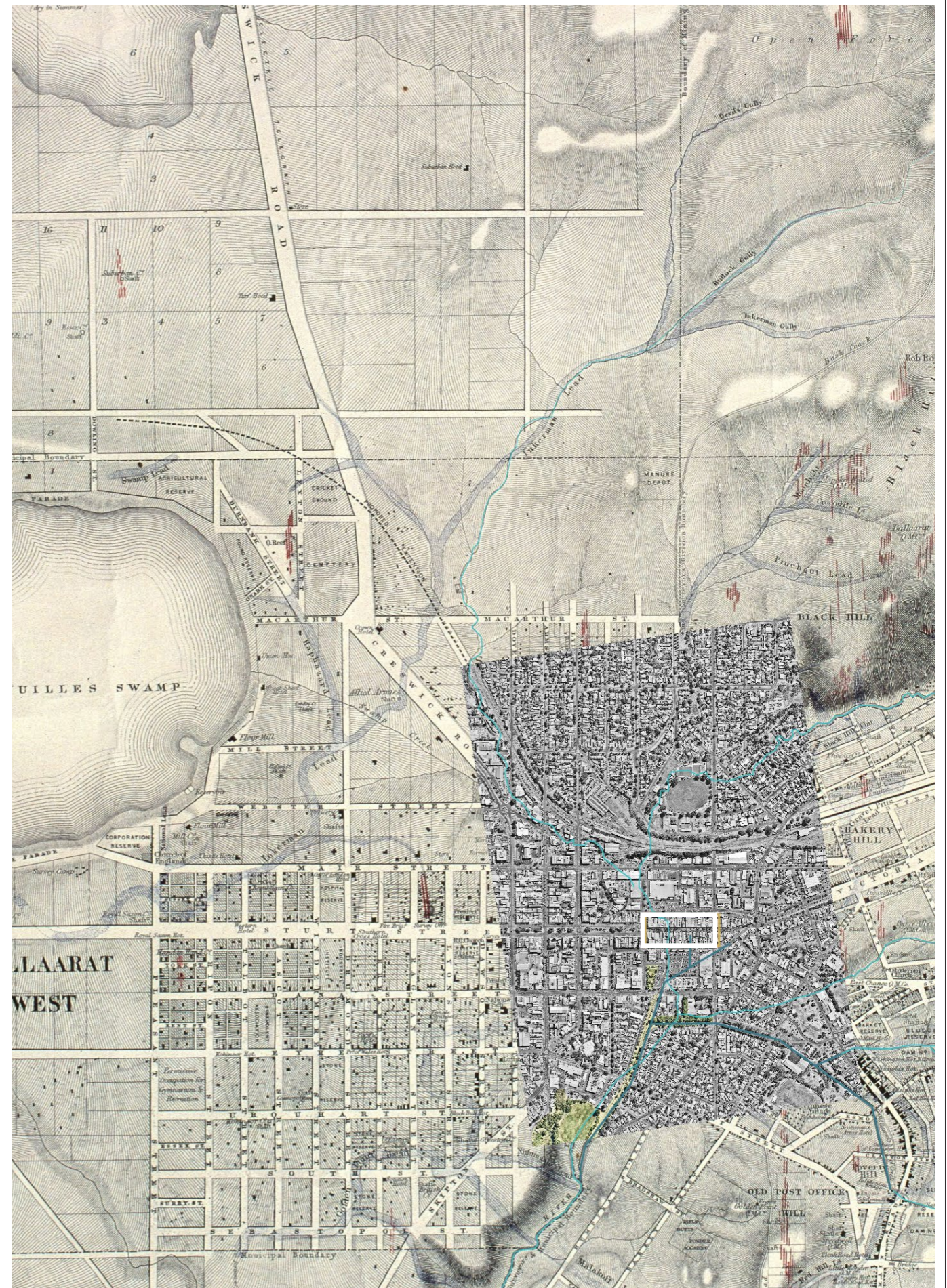
VIEW EAST TOWARDS COLISEUM WALK



COLISEUM WALK

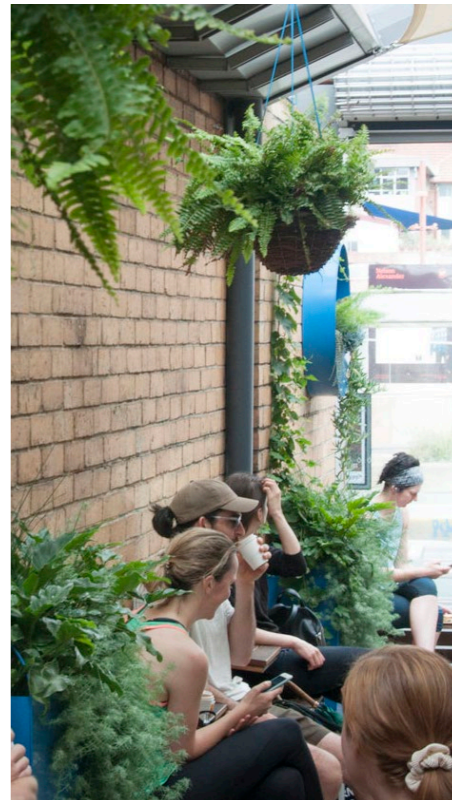


THE YARROWEE RIVER



COLISEUM WALK

REFERENCE IMAGERY



EXPRESSING THE YARROWEE

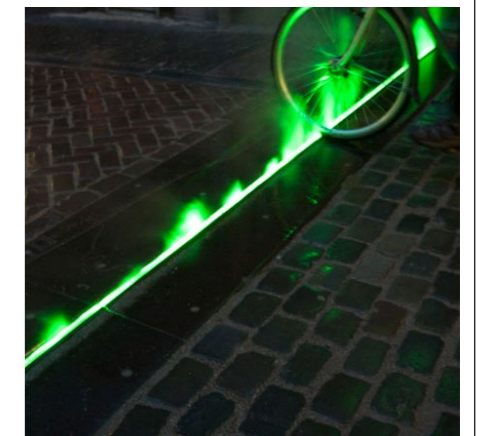
Reveal -
Literal openings to the
sounds and sight of the
Yarrowee below



Transform -
bringing Yarorwee water to
the surface

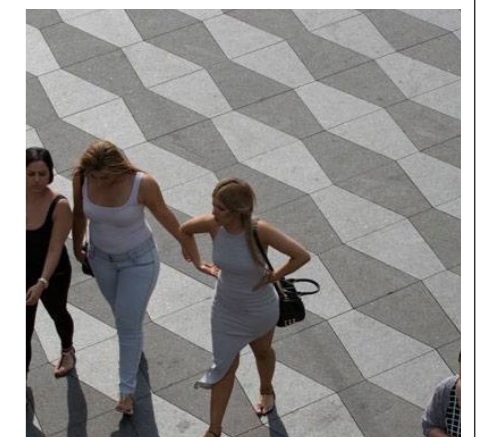
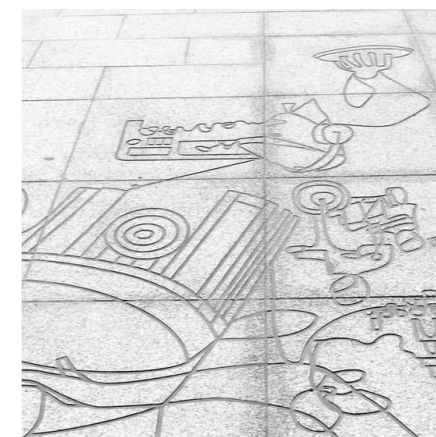


**Interpret /
represent -**
Sculptural insertions
on the finished surface
revealed through reflection



Intent: Express the literal and metaphorical layers of the precinct by telling the story of the Yarrowee River & creatively revealing it's physical presence below.

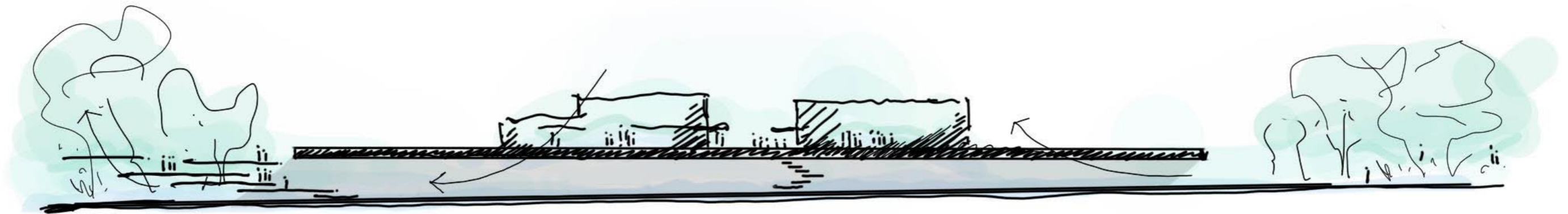
Finishes -
Express the dynamics
of the Yarrowee through
pavement treatments &
surface finishes



THE YARROWEE RIVER

DESIGN APPROACH

revealed in the streetscape

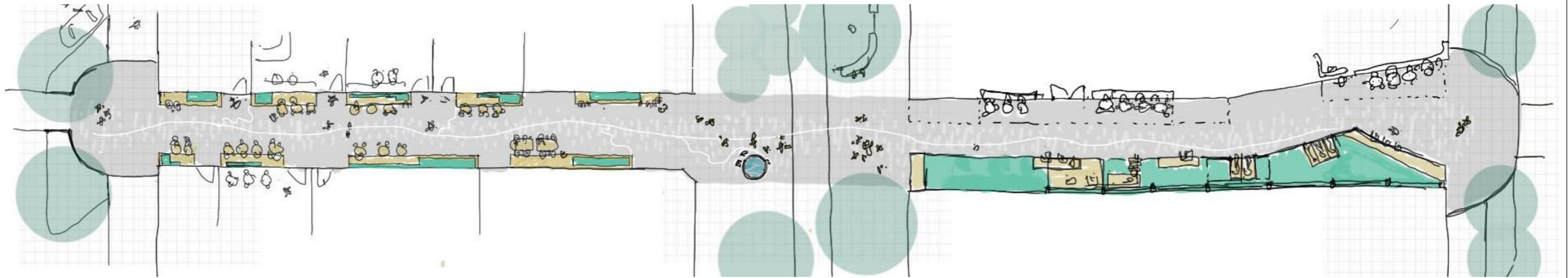
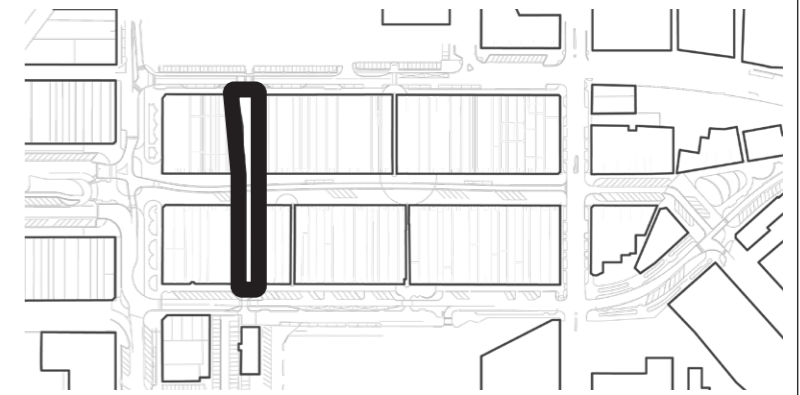


adapted in the parkland

river restored

COLISEUM WALK

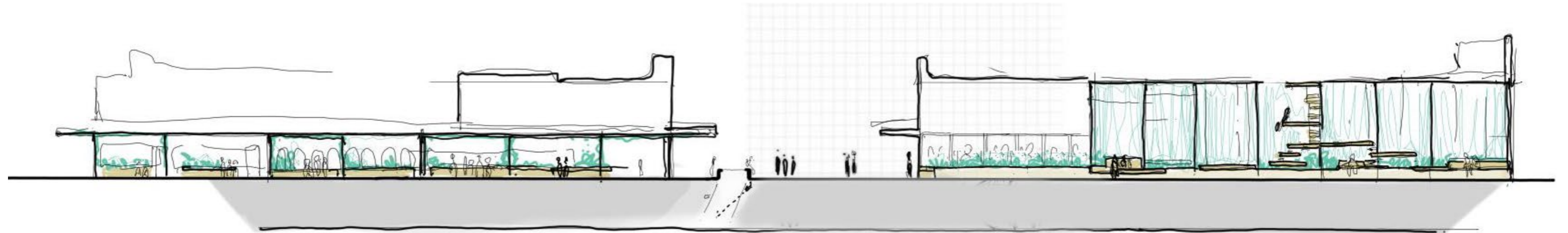
SKETCH DEVELOPMENT



coliseum walk

bridge street

norwich plaza



port holes
hear and see the river

viewing tower
to the surroundings



COLISEUM WALK

CANOPY OPTION SELECTED



COLISEUM WALK

YAROWEE PAVEMENT EXPRESSION

central drainage channel - surface water collection
pavement - water representation through finishes

