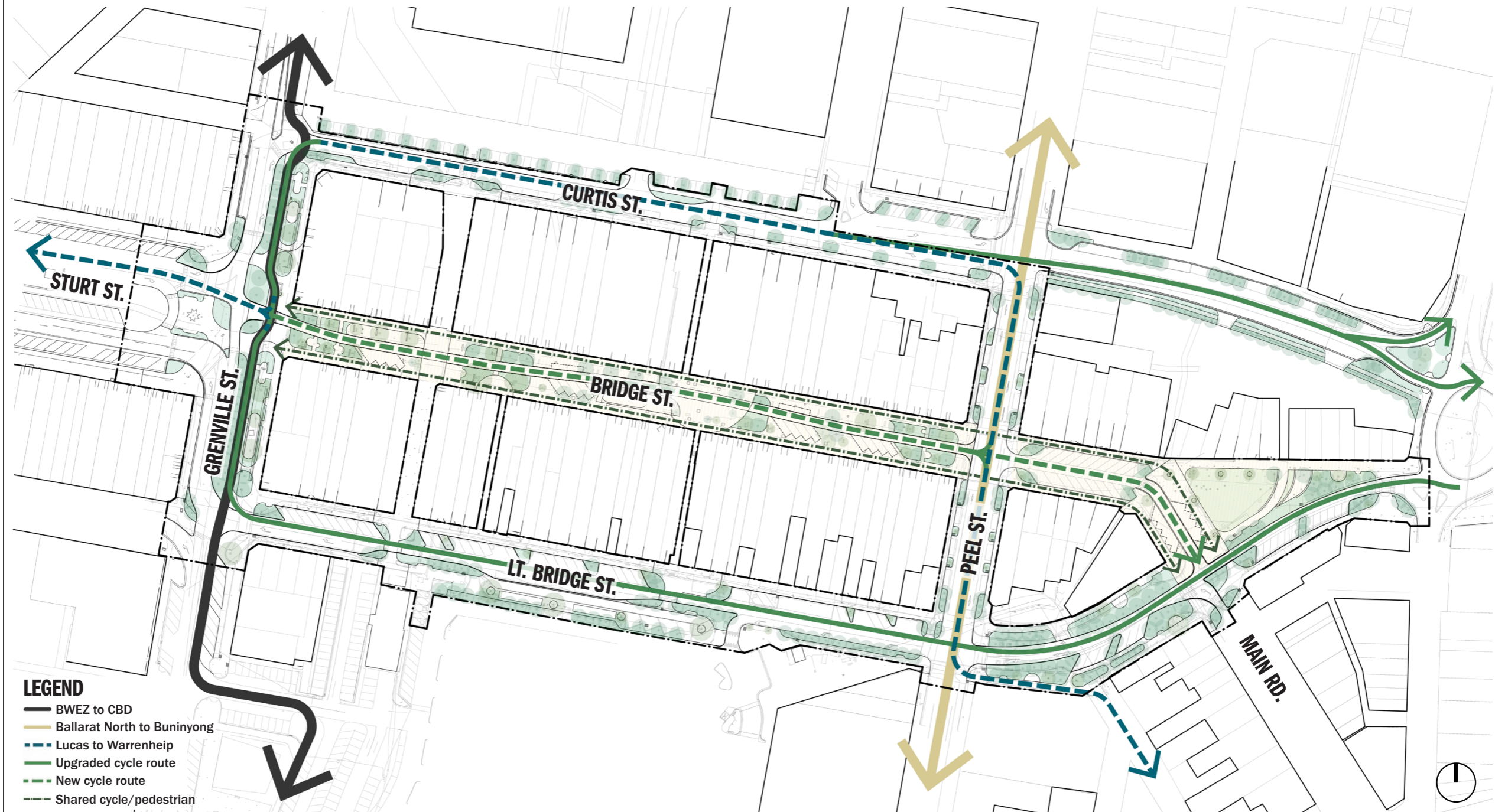
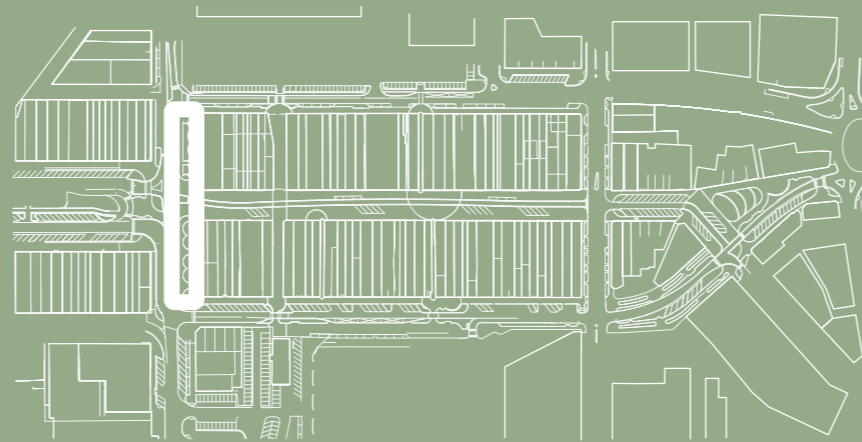


PRECINCT CYCLE NETWORK

CONNECTING INTO THE BALLARAT CYCLING ACTION PLAN



GRENVILLE STREET

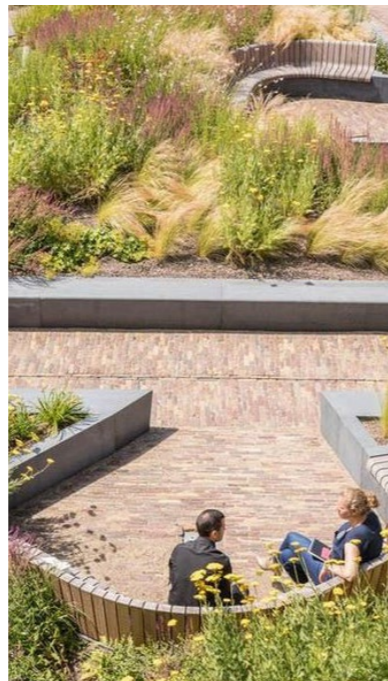


GRENVILLE STREET

LINEAR PARK & GARDEN STREET



**a green street
with legible structure**



quieter moments



immersed in planting



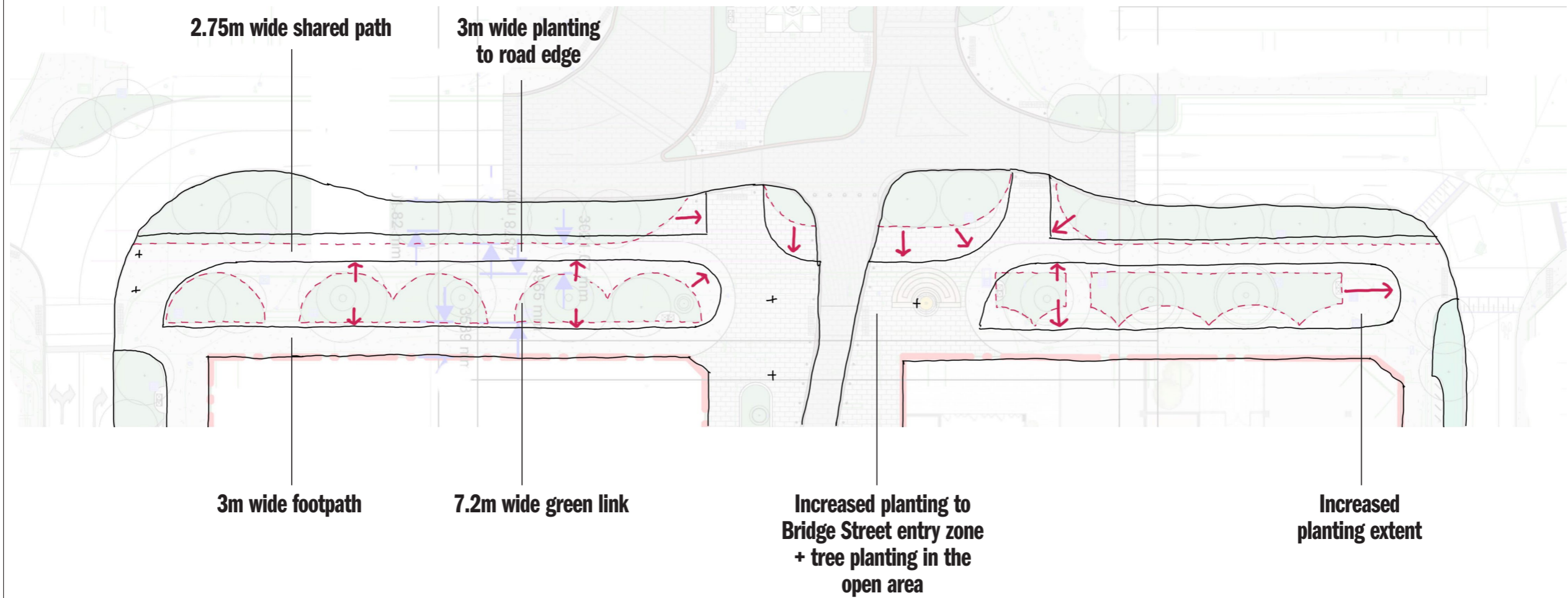
moments for play



**gathering spaces
+ future dining activation**

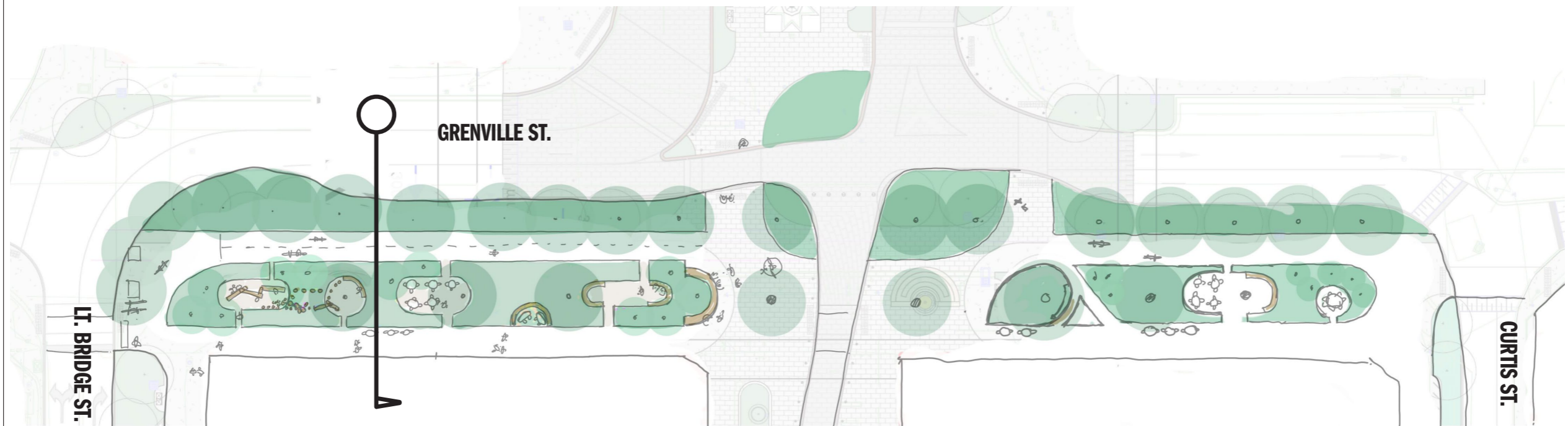
GRENVILLE STREET

REVISED STRUCTURE



GRENVILLE STREET

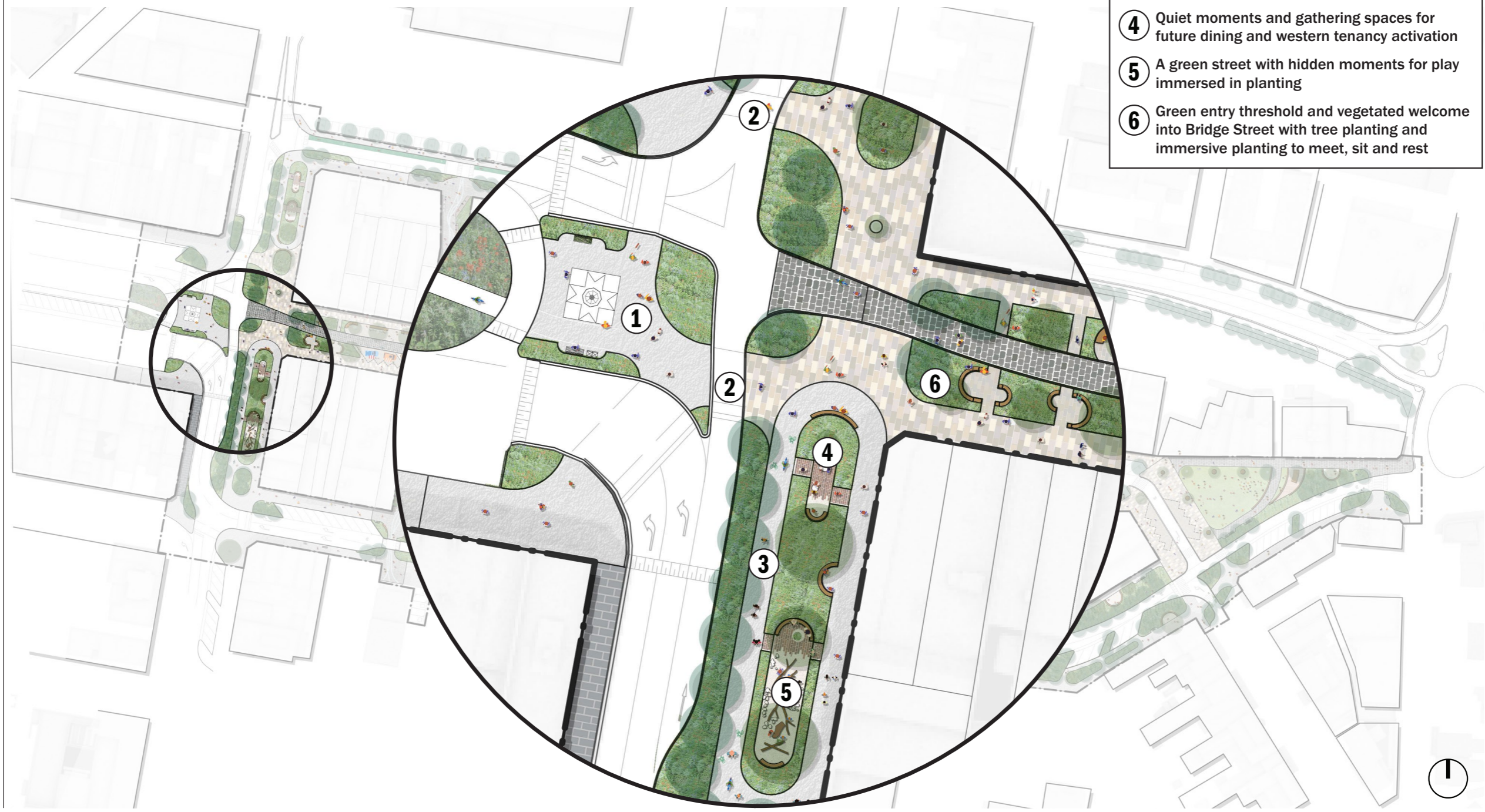
SKETCH DEVELOPMENT



GRENVILLE STREET

CONCEPT DEVELOPMENT

- 1 Extension of Sturt St gardens & public realm. Retention of existing monument.
- 2 Consolidated pedestrian crossings for increased connectivity Central pedestrian
- 3 Grenville St shared path (SUP) that connects into BWEZ to CBD cycle route.
- 4 Quiet moments and gathering spaces for future dining and western tenancy activation
- 5 A green street with hidden moments for play immersed in planting
- 6 Green entry threshold and vegetated welcome into Bridge Street with tree planting and immersive planting to meet, sit and rest

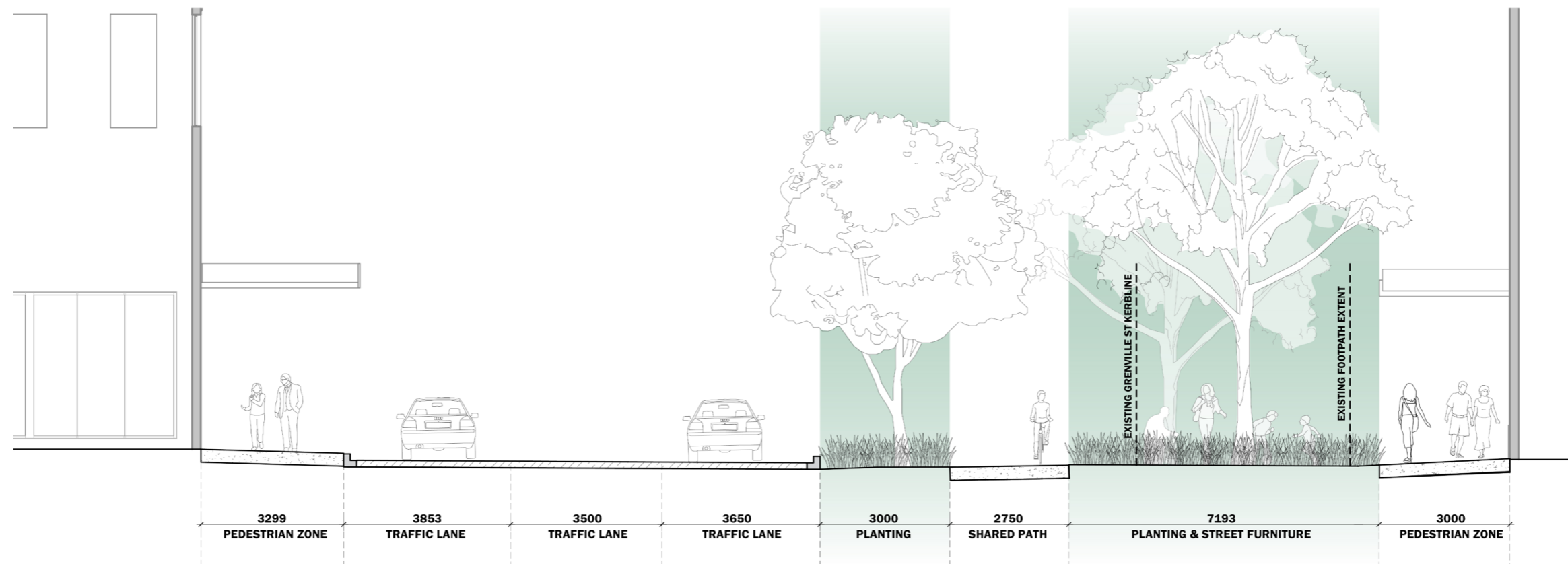


GRENVILLE STREET

REVISED CROSS SECTION

KEY CONSIDERATIONS:

- Reduced pedestrian zone along western building edge to maximise opportunity for planting
- Shared path reduced to 2.75m as per Ausroads standards (Recommended recreational and regional commuter paths)
- Approximately 7m central garden street and linear park, with room for activity, gathering and respite
- Reduced western planting zone to provide separation from roadway

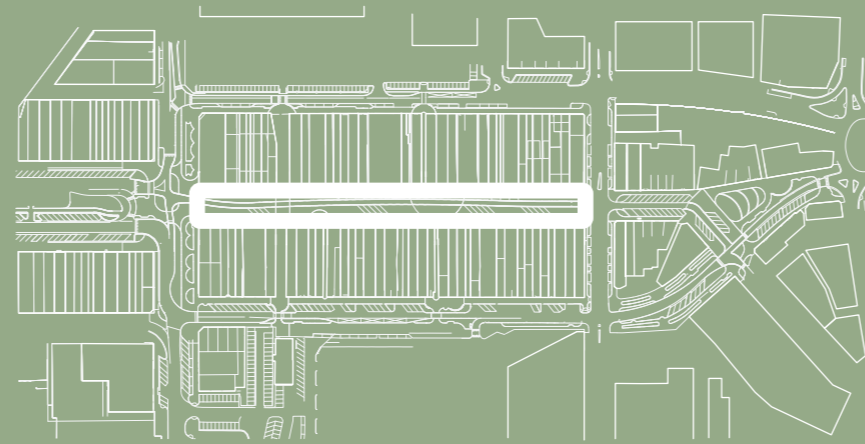


GRENVILLE STREET

VIEW WEST TOWARDS BRIDGE & STURT STREET



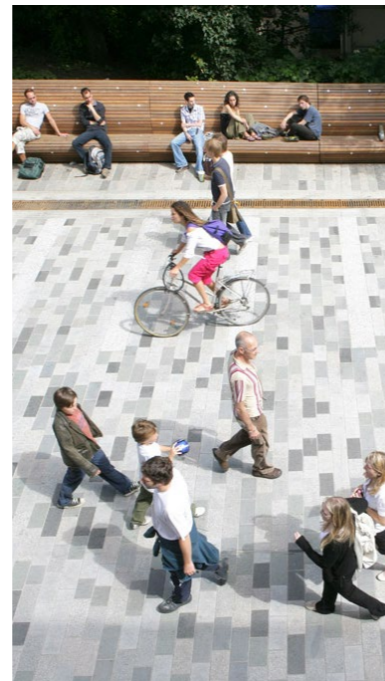
BRIDGE STREET



BRIDGE STREET



green entry thresholds



a shared zone



providing a variety of functions



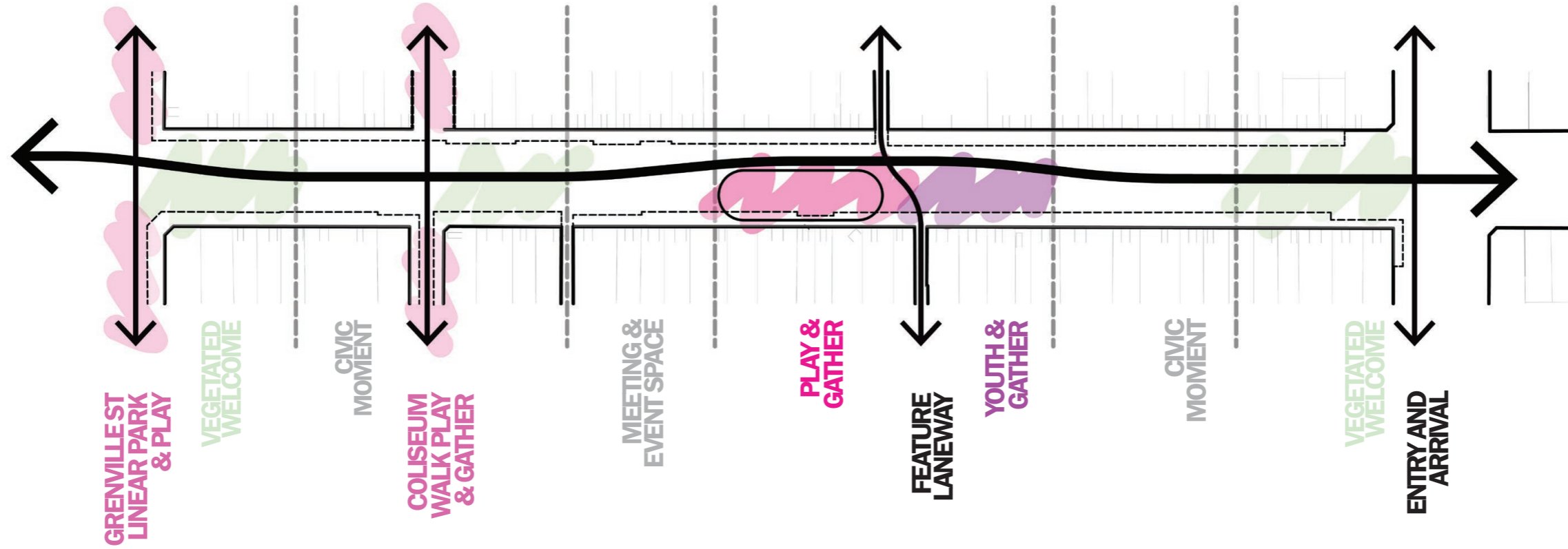
market, performance and event spaces



moments for play

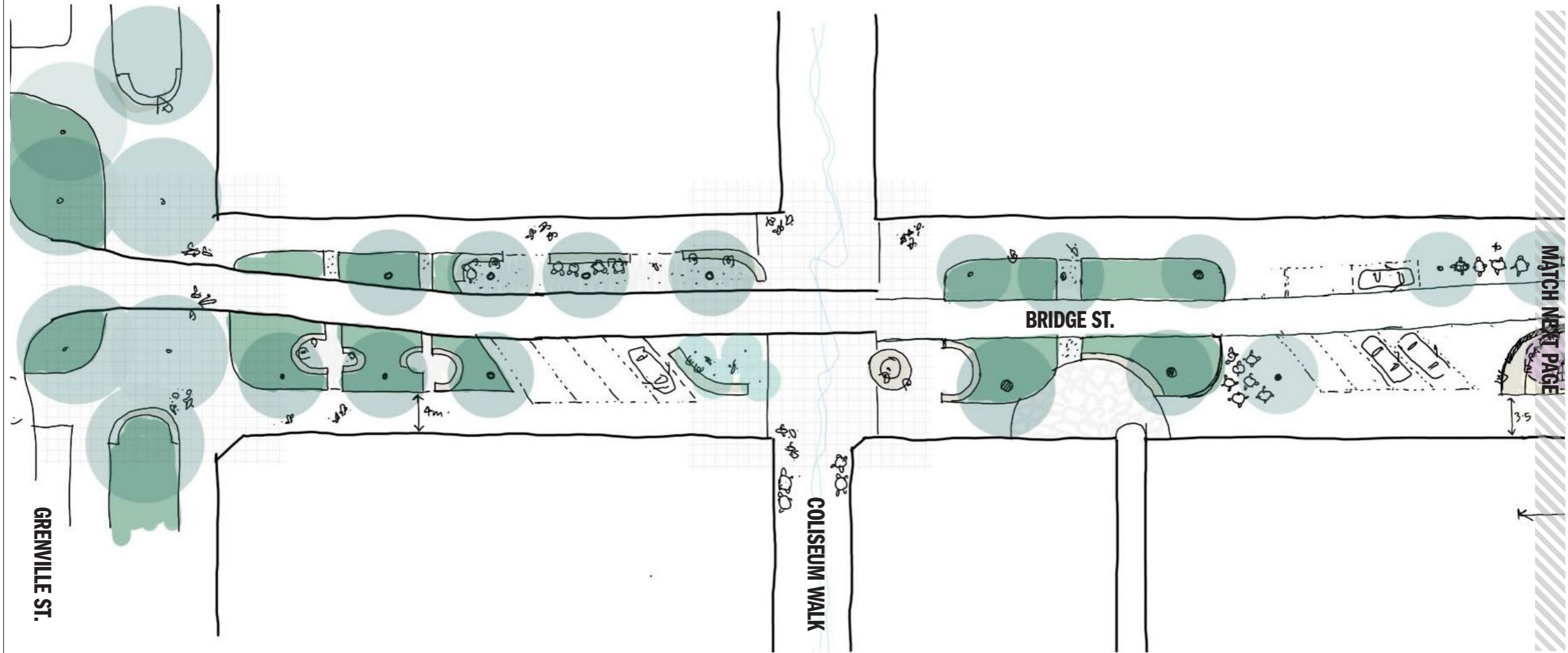
BRIDGE STREET

REVISED PRECINCT STRUCTURE



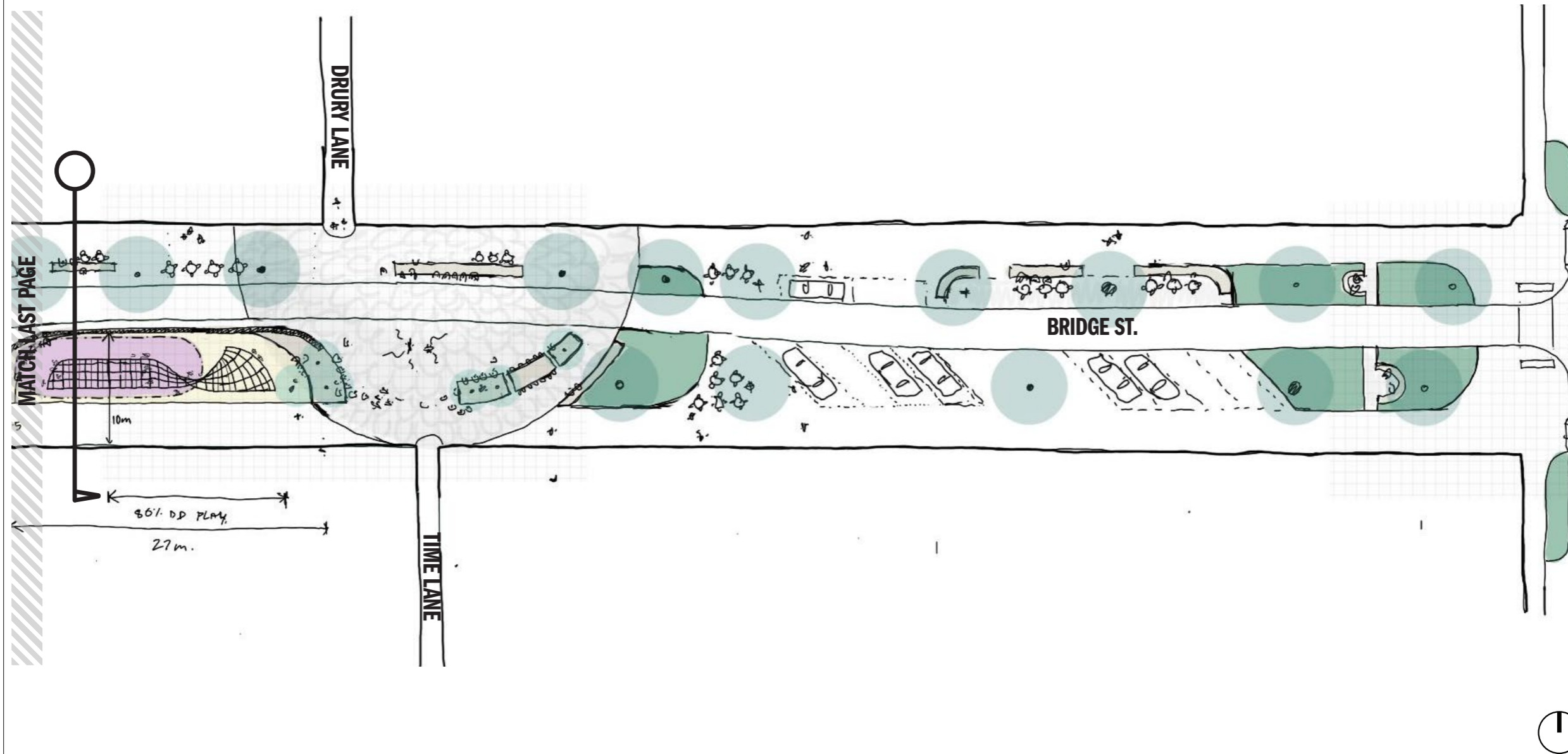
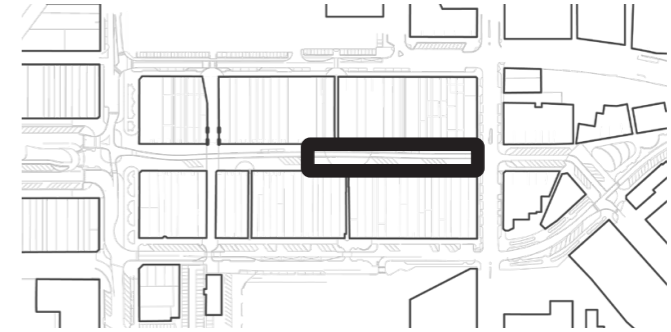
BRIDGE STREET

REVISED SKETCH DEVELOPMENT



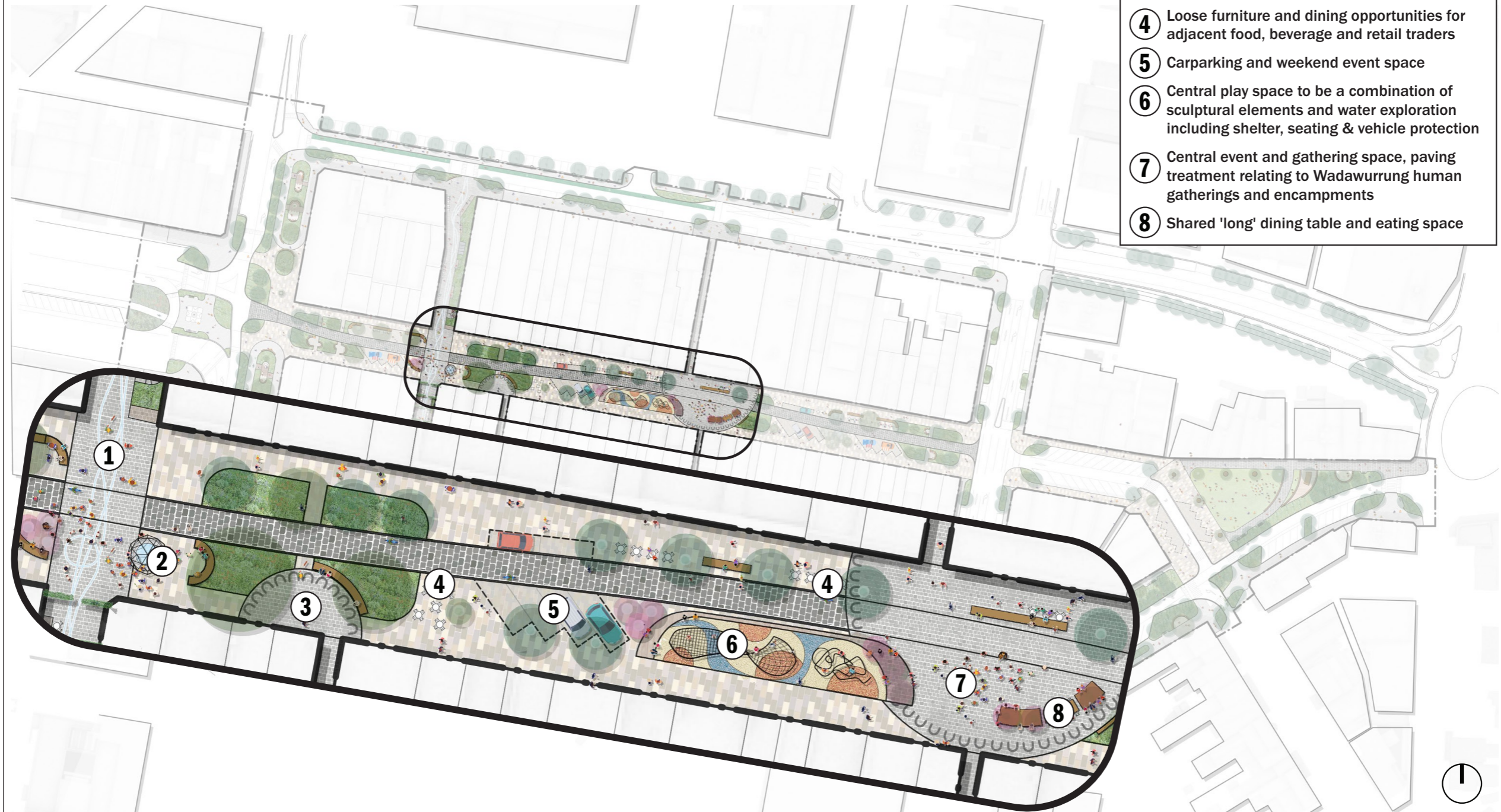
BRIDGE STREET

REVISED SKETCH DEVELOPMENT



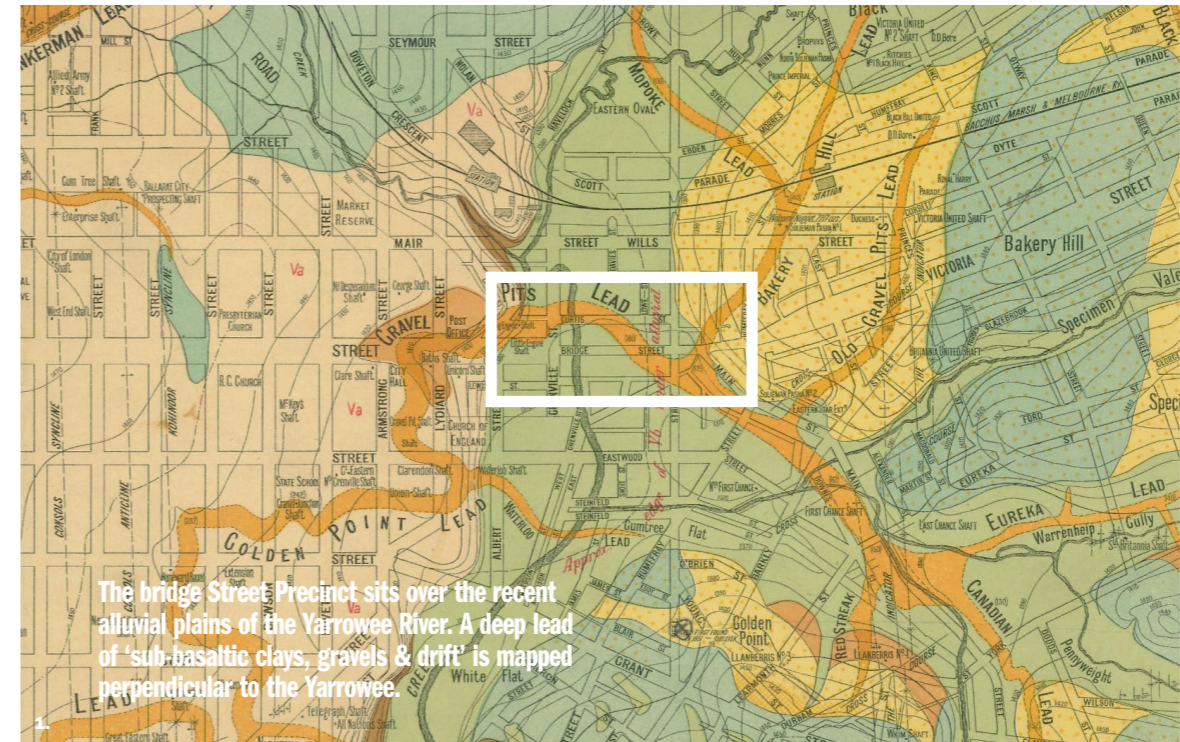
BRIDGE STREET

CONCEPT DEVELOPMENT

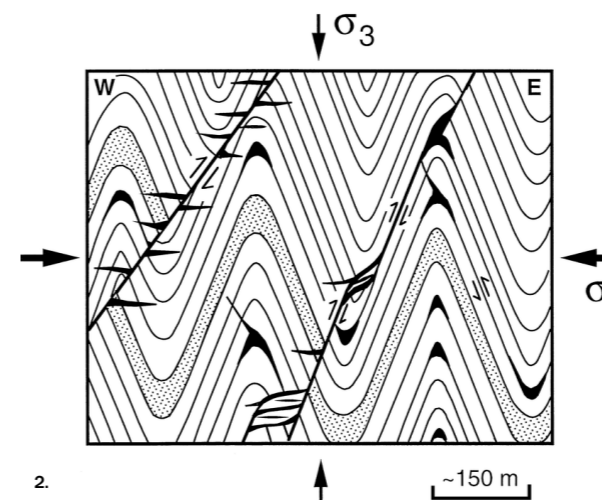
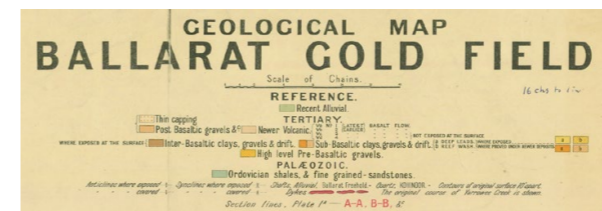


GEOLOGY & INDUSTRY

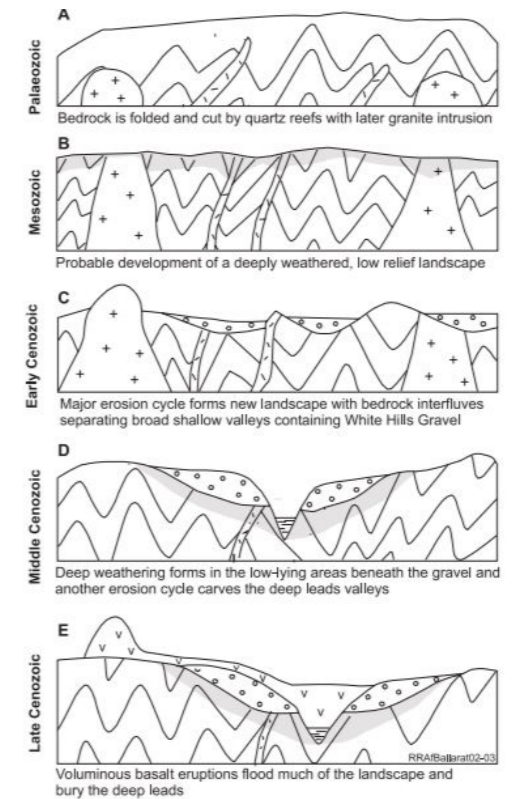
REFERENCING BALLAARAT'S LAYERS



The bridge Street Precinct sits over the recent alluvial plains of the Yarrowee River. A deep lead of 'sub-basaltic clays, gravels & drift' is mapped perpendicular to the Yarrowee.



2. Images:
 1. Geological Map of Ballarat Gold Fields. Originally surveyed by W. Baragwanath for Geological Survey of Victoria 1917.
 2. Structural controls on gold-quartz mineralisation within the Bendigo-Ballarat Zone of the Victorian goldfield. Jogs after Cox et al., 1991b; Glen, 1995; Willman, 1995
 3. Ballarat landscape evolution through time, D.H. Taylor for Geological Survey of Victoria

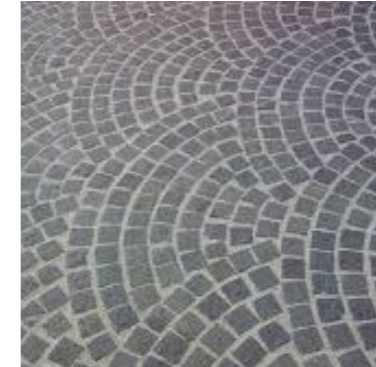


Intent: Tell a nuanced story that references the Ballaarat's unique geology of sandstone and granite, it's quartz reefs and gold deposits.

BRIDGE STREET

MATERIAL EXPRESSION

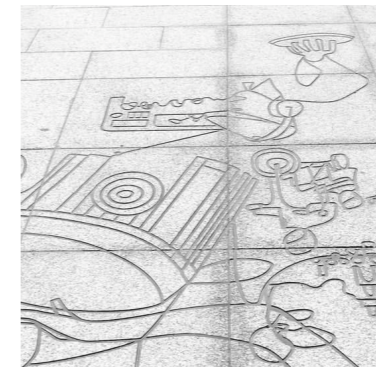
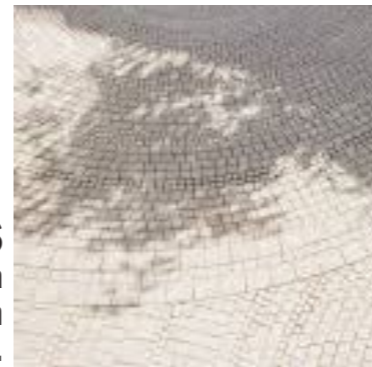
BLUESTONE LANES
 Respect the historical laneways.
 Variation in scale, pattern &
 finish according to location.



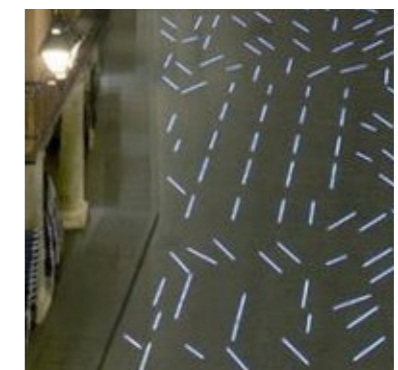
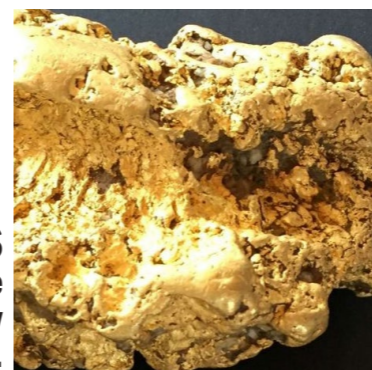
WARM STREETS
 Reference the alluvial field of
 sandstone & granite gravel
 below.



DETAIL MOMENTS
 High quality materials, like a
 quartz reefs of the Victorian
 gold fields.



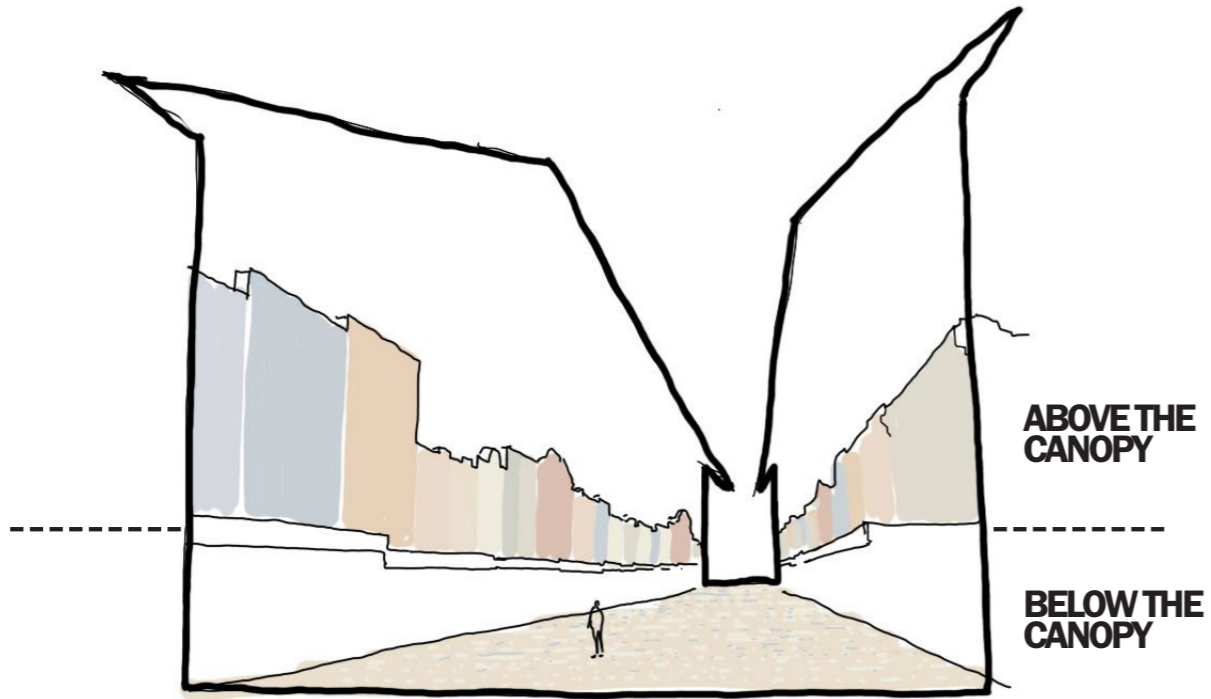
NUGGETS
 Specs of gold through the
 wayfinding or art strategy
 complete the geological story.



Intent: Develop a cohesive and legible material palette spanning scale, application & function.

BRIDGE STREET

STREET CANYON MATERIAL EXPRESSION



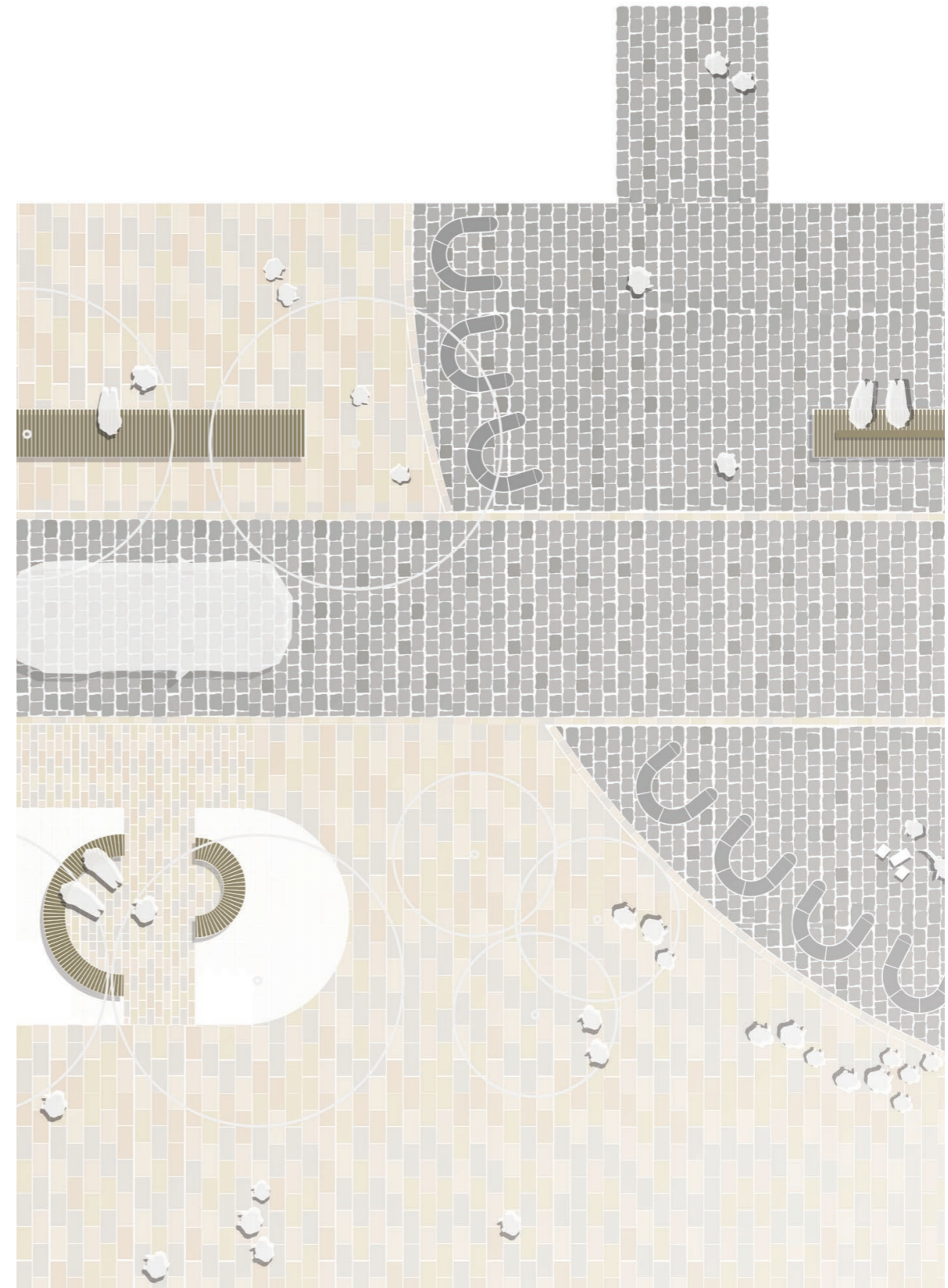
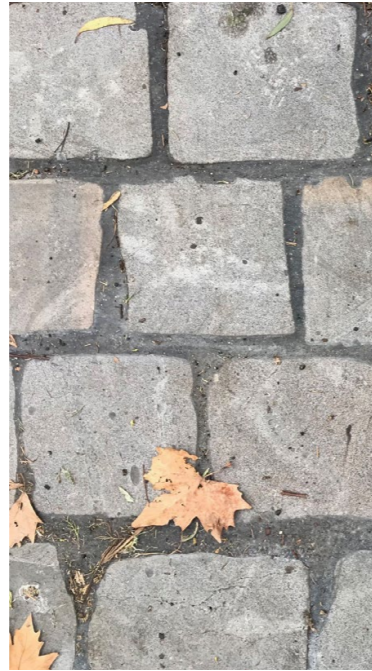
BRIDGE STREET

PAVEMENT STRATEGY



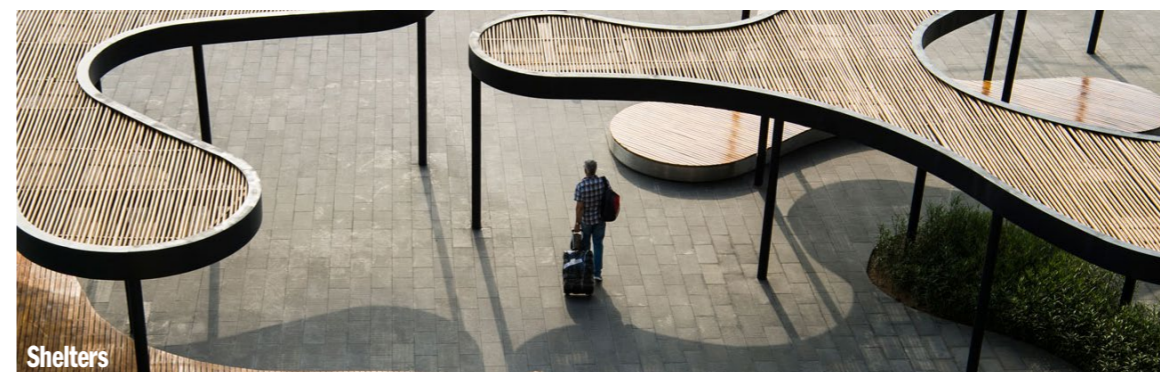
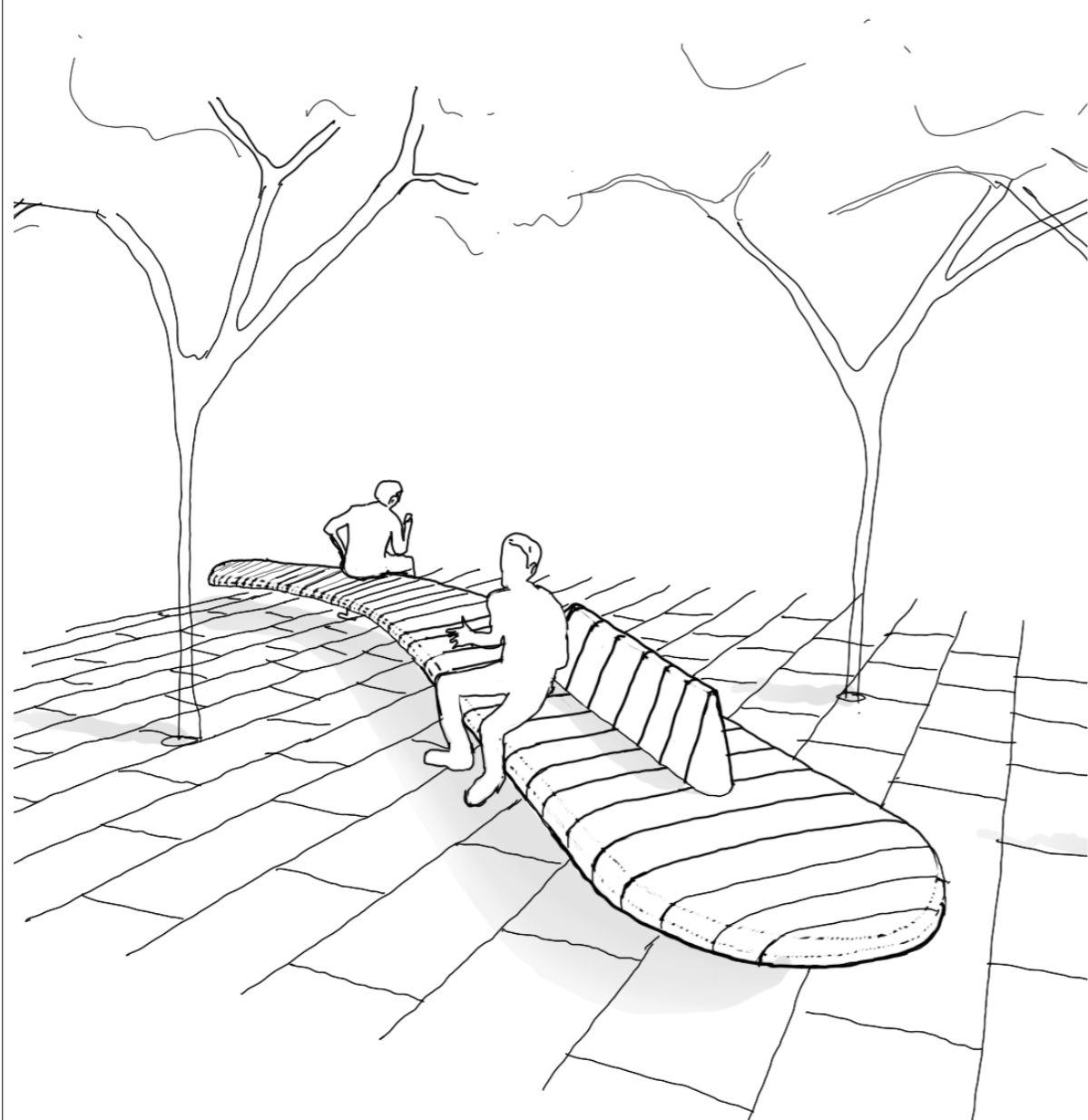
BRIDGE STREET

MATERIAL EXPRESSION



BRIDGE STREET

FURNITURE AND DETAILING

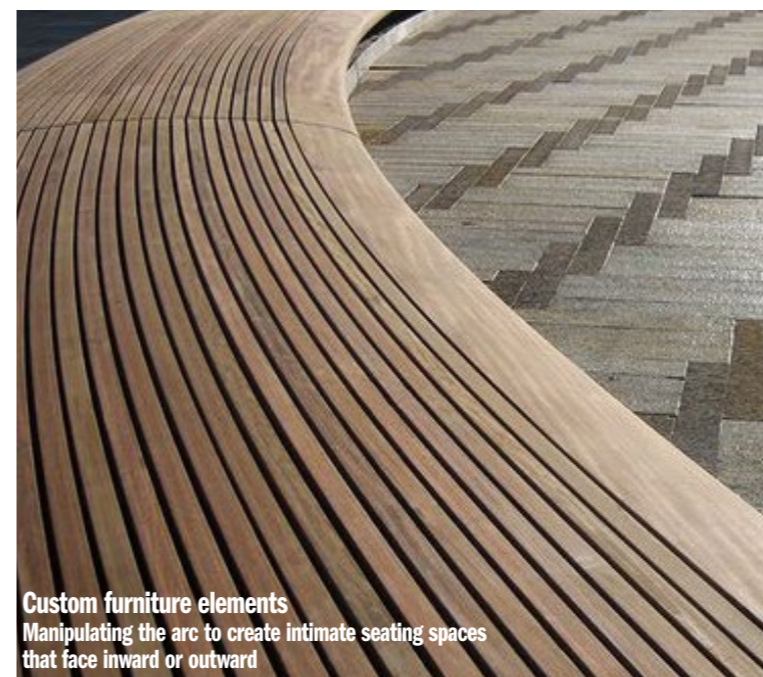


Shelters



Materiality

High quality material selection that provides warmth to the precinct and reference's Ballarat's sandstone and granite below



Custom furniture elements

Manipulating the arc to create intimate seating spaces that face inward or outward



BRIDGE STREET

VIEW EAST AT GRENVILLE STREET ENTRANCE

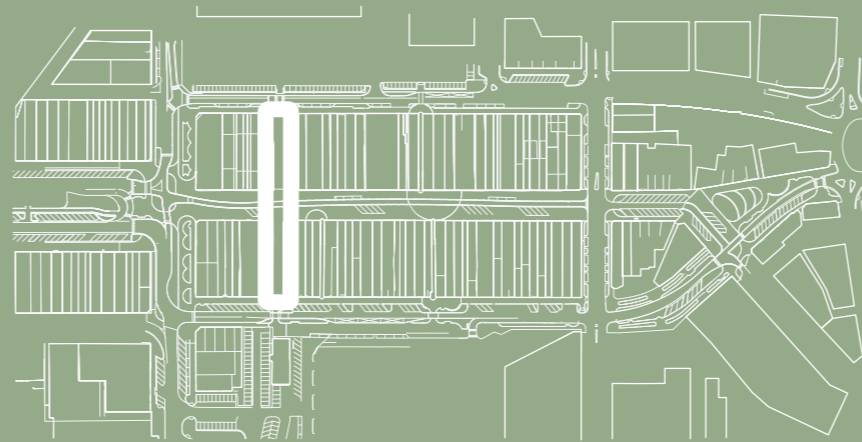


BRIDGE STREET

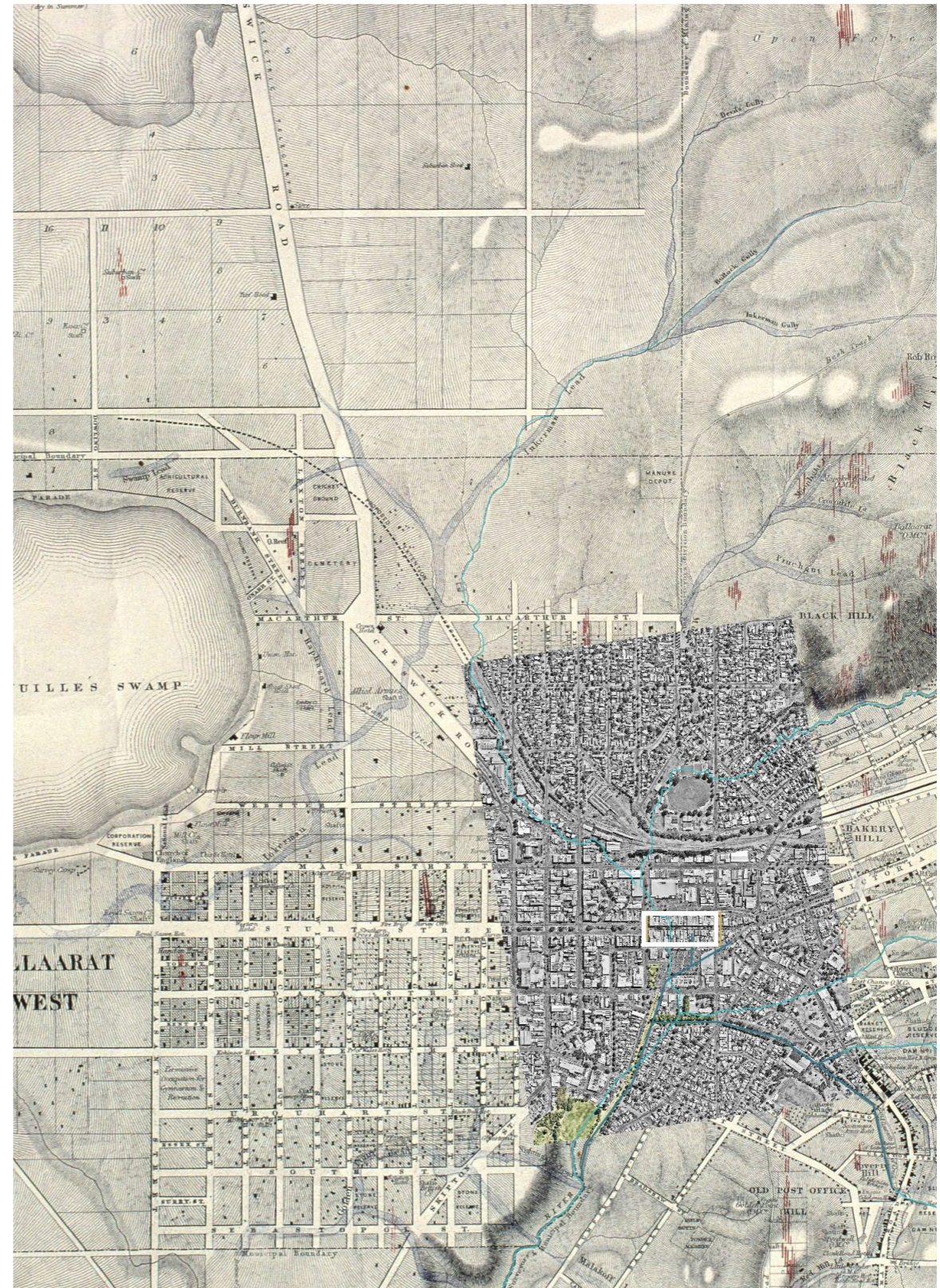
VIEW EAST TOWARDS COLISEUM WALK



COLISEUM WALK



THE YARROWEE RIVER



COLISEUM WALK

REFERENCE IMAGERY

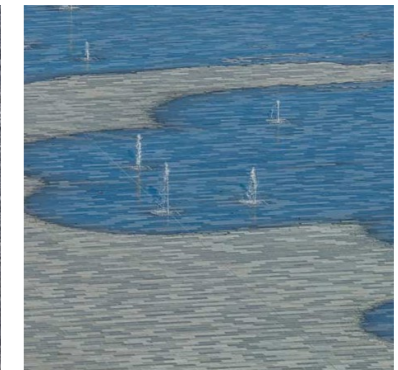
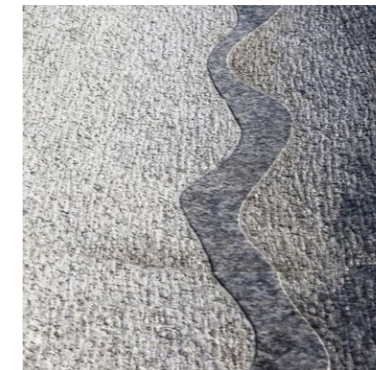
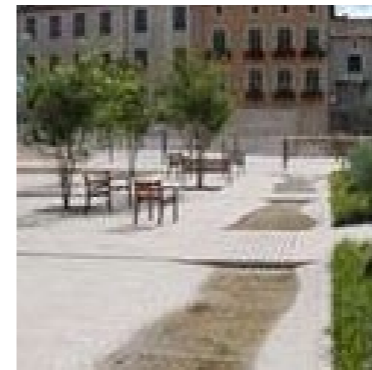


EXPRESSING THE YARROWEE

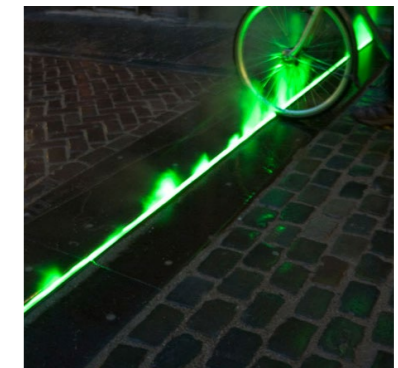
Reveal -
Literal openings to the
sounds and sight of the
Yarrowee below



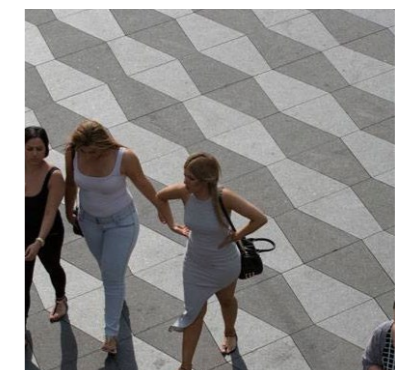
Transform -
bringing Yarorwee water to
the surface



**Interpret /
represent -**
Sculptural insertions
on the finished surface
revealed through reflection



Finishes -
Express the dynamics
of the Yarrowee through
pavement treatments &
surface finishes



Intent: Express the literal and metaphorical layers of the precinct by telling the story of the Yarrowee River & creatively revealing it's physical presence below.

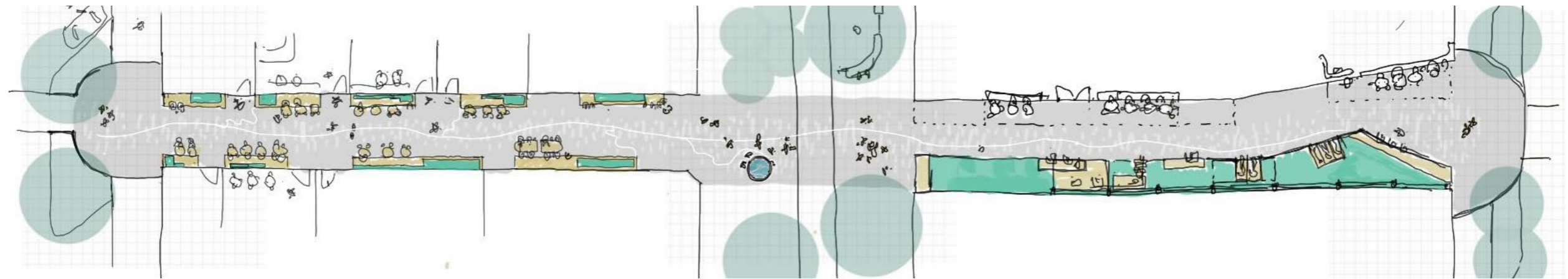
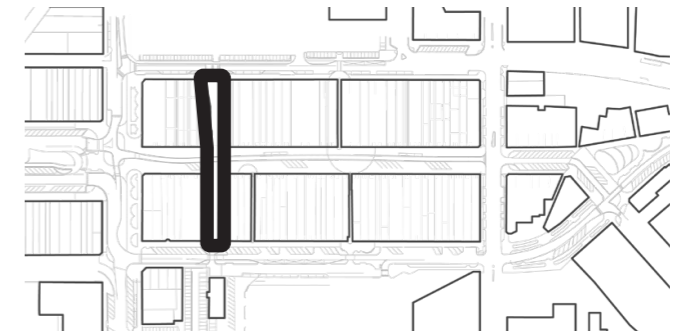
THE YARROWEE RIVER

DESIGN APPROACH



COLISEUM WALK

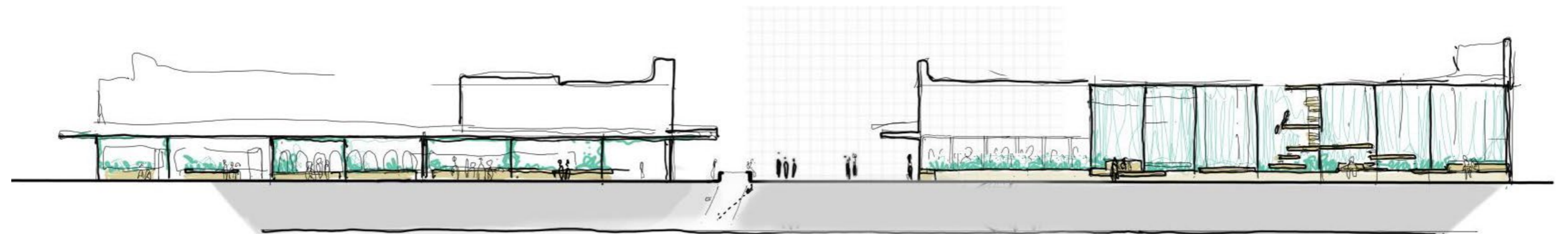
SKETCH DEVELOPMENT



coliseum walk

bridge street

norwich plaza



port holes
hear and see the river

viewing tower
to the surroundings



COLISEUM WALK

CANOPY OPTION SELECTED



COLISEUM WALK

YAROWEE PAVEMENT EXPRESSION

central drainage channel - surface water collection
pavement - water representation through finishes

