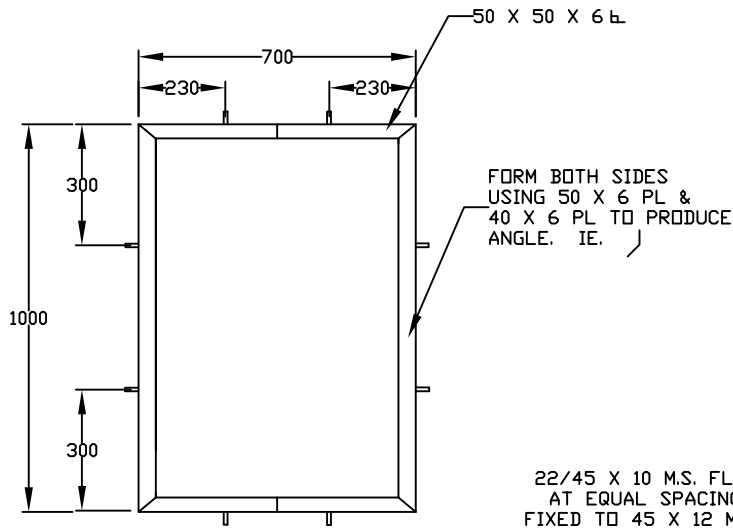


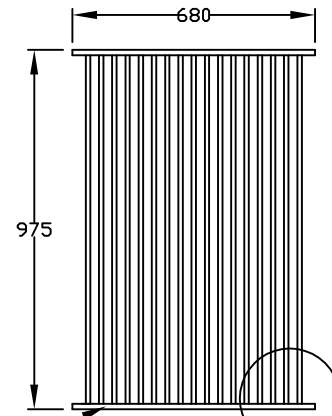
PLAN

TROWELLED FINISH WITH EDGES TO BE ROUNDED.



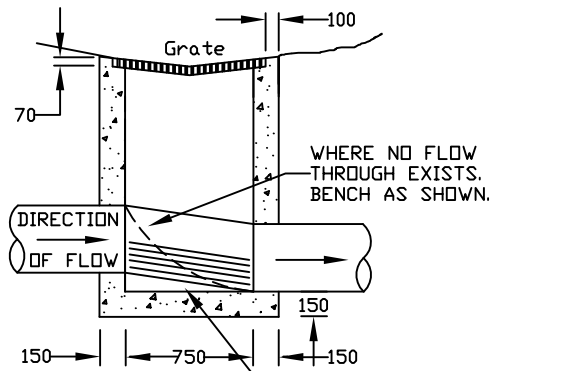
GRATE SEAT

FORM BOTH SIDES USING 50 X 6 PL & 40 X 6 PL TO PRODUCE ANGLE. I.E.



GRATE

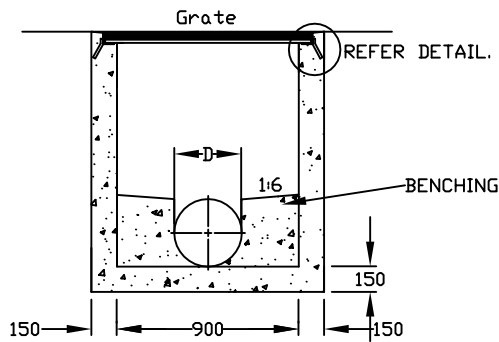
22/45 X 10 M.S. FLAT AT EQUAL SPACINGS. FIXED TO 45 X 12 M.S. I.E. ENDS.



SECTION AA

WHERE NO FLOW THROUGH EXISTS. BENCH AS SHOWN.

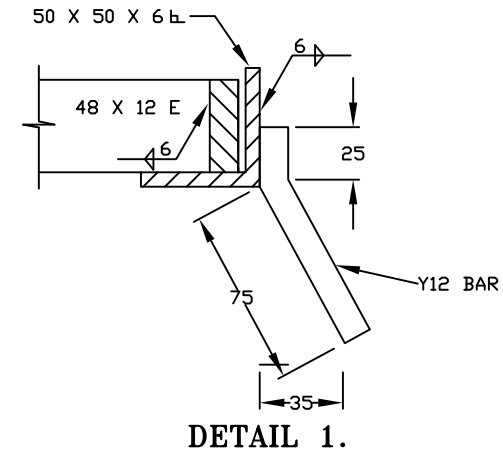
PROVIDE MIN. INVERT DROP OF 80 mm ACROSS PIT.



SECTION BB

NOTES:

1. ALL DIMENSIONS ON MILLIMETRES.
2. PIT TO BE CONSTRUCTED USING 20 MPa CONC.
3. MAXIMUM PIPE DIAMETER TO BE 450.
4. GRATE & SEAT TO BE HOT DIP GALVANISED AFTER FABRICATION.
5. GRATE TO SUIT SEAT AFTER GALVANISING.



DETAIL 1.

CITY OF BALLARAT

No.	AMENDMENTS	DATE

Approved by: _____
Date: _____

900 X 600 GRATED
JUNCTION PIT TO
SUIT SPOON DRAIN.



SCALE:
NOT TO SCALE
SHEET 1 OF 1
DRAWING NO:
SD-P6