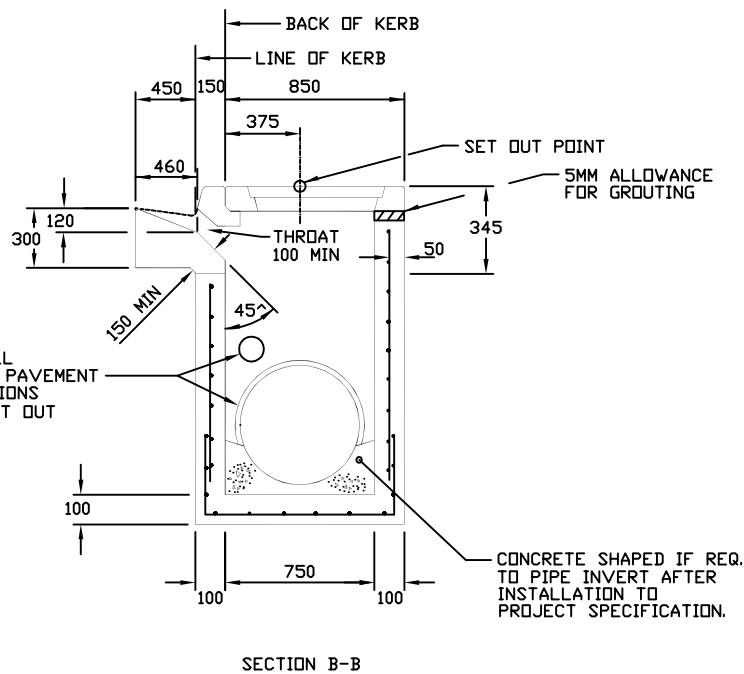


SECTION A-A



SECTION B-B

DEPTH	REINFORCEMENT	INTERNAL DIMENSION (mm)	ADDITIONAL INFORMATION
0-1200	F72	1800 X 750	-
1200-2400	F92	1800 X 900	STEP IRONS
2400-UP	F1218	1800 X 900	LADDER

NOTES:

- HAUNCHING MAY BE REQUIRED FOR PIPES OVER 450 DIA, REFER TO PIT SCHEDULE FOR SIZES OF SPECIFIC PITS. PITS WITH HAUNCHING IN TWO DIRECTIONS.
- PITS ARE TO BE MANUFACTURED UNDER QUALITY PROCEDURES AND ENGINEERED COMPUTATIONS WHICH COMPLY WITH THE AUST ROADS BRIDGE DESIGN CODE 1992 WHICH STATE:
 - COMBINED FACTORED LATERAL PRESSURE AT ANY POINT AT THE ULTIMATE LIMIT STAGE SHALL BE NOT LESS THAN 5kPa
 - ADEQUATE DRAINAGE SHALL BE PROVIDED TO PIT WALLS TO AVOID HYDROSTATIC PRESSURE
 - VERTICAL LOAD 210 kN APPLIED ANYWHERE ON PIT
 - MINIMUM REINFORCEMENT AREA SHALL BE 150 MM /M
 - CONCRETE SHALL COMPLY WITH SECTION 610 OF VICROADS SPECIFICATIONS
- REINFORCEMENT AND CONCRETE PLACEMENT AND INSTALLATION COMPLY WITH VICROADS 610, VIC PITS 7/92, THE RELEVANT AUSTRALIAN STANDARD SPECIFICATIONS AND STRUCTURAL DESIGNS.

CITY OF BALLARAT

ALL DIMENSIONS ARE IN MILLIMETRES	
No.	AMENDMENTS

Approved by: _____
Date: _____

**PRE-CAST SIDE ENTRY PIT
CONCRETE COVER-1.8m INLET**



SCALE:
NOT TO SCALE
SHEET 1 OF 2
DRAWING NO:
SD-P2-1