

Contents

1.0 Landscape Design3

1.1 Landscape Vision4

1.2 Landscape Material Palette5

1.3 Landscape Plan Ground Floor6

1.3 BAD Canopy & Deepsoil Requirements7

1.4 Courtyard Landscape Design8

1.5 Courtyard Elevation 019

1.6 Courtyard Elevation 0210

1.7 Courtyard Elevation 0311

1.8 Landscape Design - Level 0112

1.9 Landscape Design - Level 0213

1.10 Landscape Design - Level 0314

1.11 Landscape Design - Level 0415

1.12 Landscape Design - Level 0516

1.13 Landscape Design - Level 0617

2.0 Plant Palette18

2.1 European Influence - Trees & Shrubs19

2.2 European Influence - Climbers, Herbs, Fruit & Edibles20

2.3 Natives - Trees & Shrubs21

2.4 Natives - Shrubs22

2.5 Natives - Shrubs, Grasses, Herbs & Groundcovers23

2.6 Grasses, Herbs & Groundcovers24

1.0 Landscape Design

Landscape Design

1.1 Landscape Vision



Local materials



Community & Use



Local Biodiversity

Landscape Design

1.2 Landscape Material Palette

Surfaces



Bluestone cobble (Local basalt)



Bluestone paving (Local basalt)

Walling



Dry Stone Wall - Strata Pattern
Castlemain - Local Yapeen stone

Planters



Metal powder coated planters
Community open space

Finish to match Architects' metalwork.



Raised concrete planters
Private open space

Natural grey concrete

1.3 Landscape Plan - Ground Floor



- 1 Bluestone paving
- 2 Existing asphalt sidewalk
- 3 Lawn
- 4 Raised metal planters
- 5 Local walling stone
- 6 Accessible walkway
- 7 Existing tree
- 8 Garden beds
- 9 Mounded planting
- 10 Steps
- 11 Proposed tree
- 12 Cafe area
- 13 1.2m high raised rectangular concrete planters
- 14 1m diameter circular planters

Landscape Design

1.4 BAD Canopy and Deepsoil Requirements



Landscape Design

1.5 Courtyard Landscape Plan



Legend

- 1 Bluestone paving
- 2 Cobblestone
- 3 Lawn
- 4 Raised metal planters
- 5 Local walling stone
- 6 Steps
- 7 Proposed tree
- 8 Garden beds
- 9 Mounded planting
- 10 External cafe dinning area
- 11 Private Open Space
- 12 Accessible walkway

Landscape Design

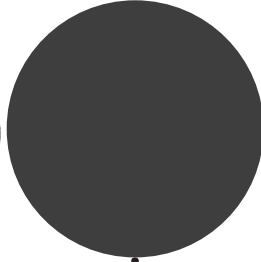
1.6 Courtyard Elevation 01



BLUESTONE
COBBLESTONE



RAISED POWDER
COATED PLANTER



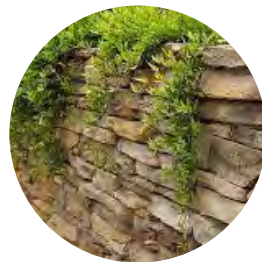
BLUESTONE
PAVING



LAWN

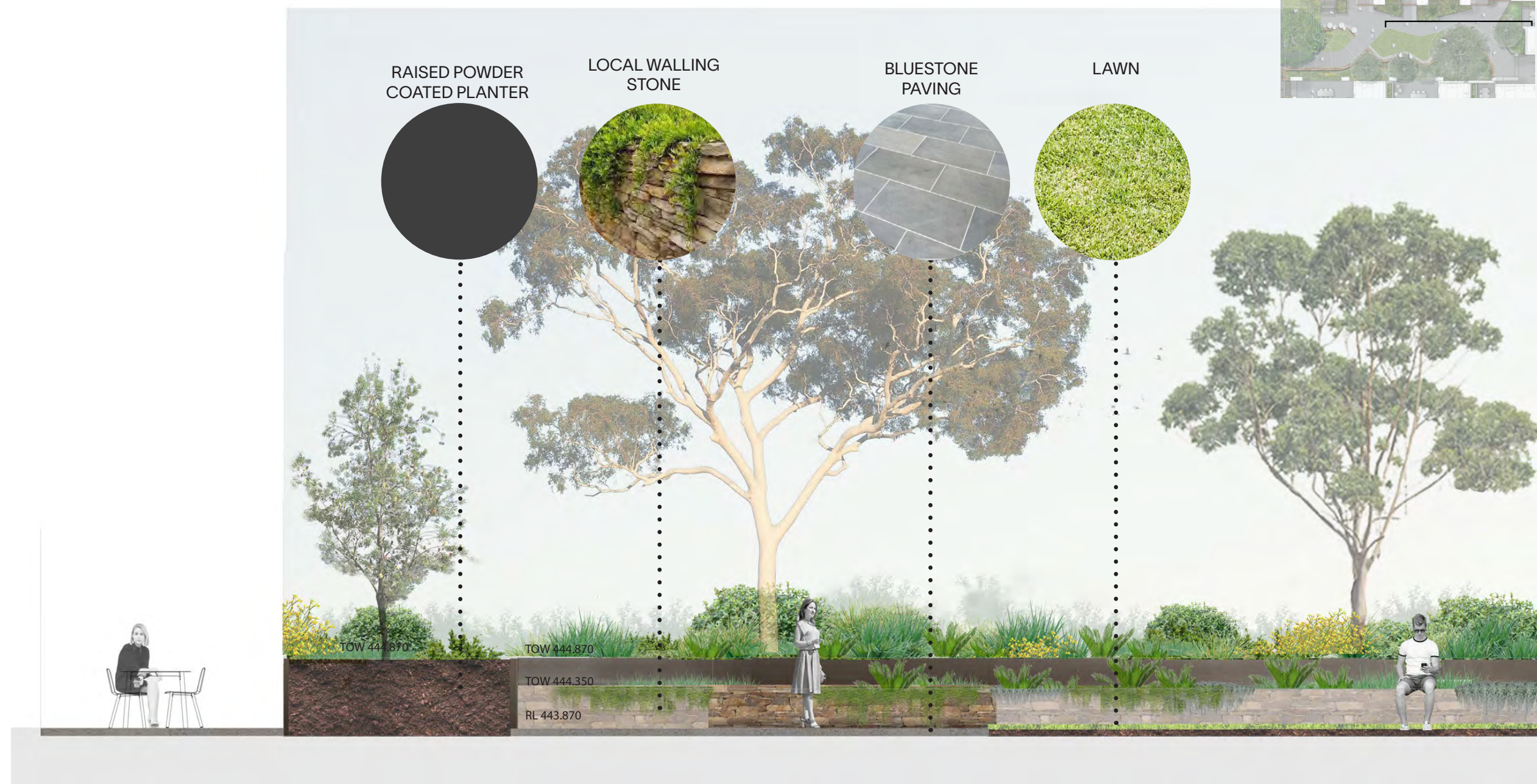


LOCAL WALLING
STONE



Landscape Design

1.7 Courtyard Elevation 02



Landscape Design
1.8 Courtyard Elevation 03



Landscape Design

1.9 Landscape Design - Level 01

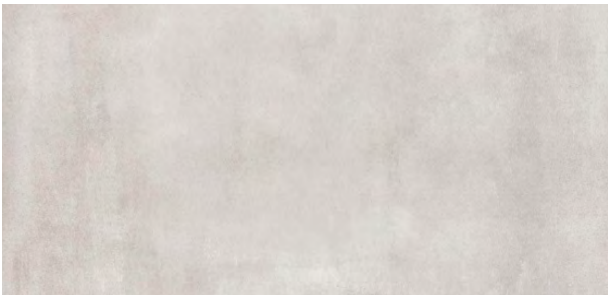


Legend

- 1 Bluestone paving
- 2 1.2m High raised rectangular concrete planters
- 3 1000mm dia. circular planters
- 4 Proposed dining area
- 5 Proposed lounge area



Bluestone pavers



Raised concrete planters
Natural grey concrete

Landscape Design

1.10 Landscape Design - Level 02



Legend

- 1 Bluestone paving
- 2 1.2m High raised rectangular concrete planters
- 3 1000mm dia. circular planters
- 4 Proposed dinning area
- 5 Proposed lounge area



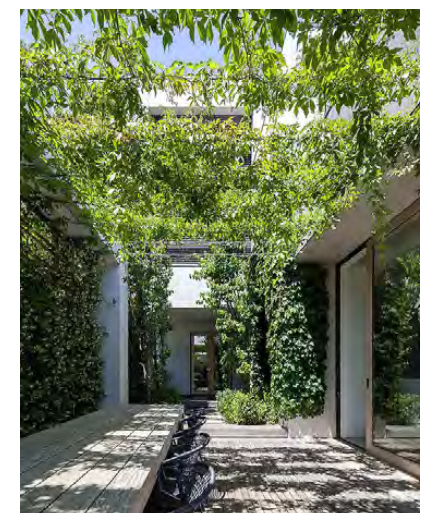
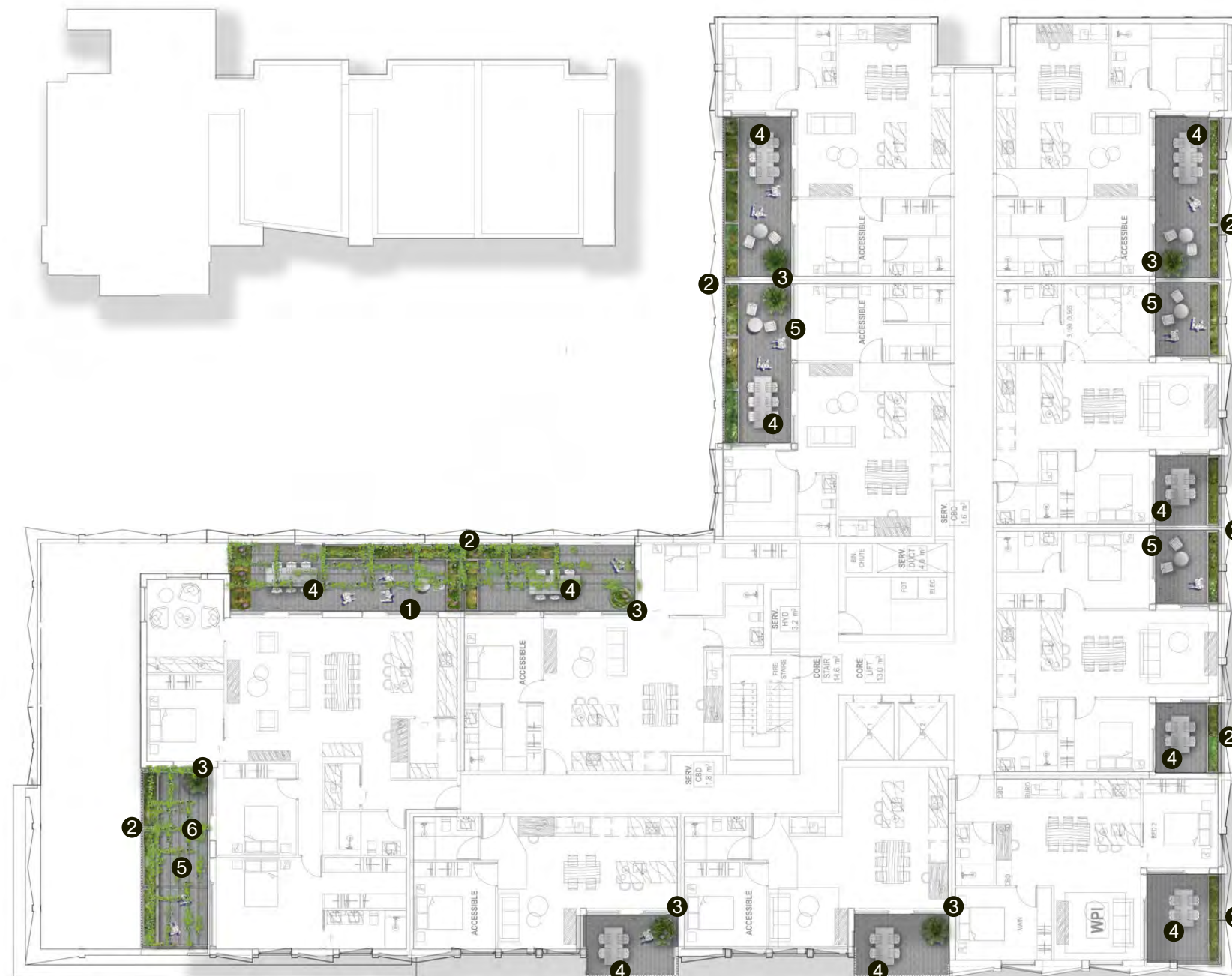
Landscape Design

1.11 Landscape Design - Level 03



Legend

- 1 Bluestone paving
- 2 1.2m High raised rectangular concrete planters
- 3 1000mm dia. circular planters
- 4 Proposed dining area
- 5 Proposed lounge area
- 6 Climbing plants on pergola



Landscape Design

1.12 Landscape Design - Level 04



- Legend
- 1 Bluestone paving
 - 2 1.2m High raised rectangular concrete planters
 - 3 1000mm dia. circular planters
 - 4 Proposed dining area
 - 5 Proposed lounge area



Landscape Design

1.13 Landscape Design - Level 05



Phillip Withers | 16 Scale 1:200 @ A3



- Legend
- 1 Bluestone paving
 - 2 1.2m High raised concrete planters
 - 3 1000mm dia. circular planters
 - 4 Proposed dining area
 - 5 Proposed lounge area
 - 6 Climbing plants on pergola



4-6 LYONS STREET, BALLARAT

18 JUNE 21 TOWN PLANNING

Landscape Design

1.14 Landscape Design - Level 06



Legend

- 1 Bluestone paving
- 2 1.2m High raised rectangular concrete planters
- 3 1000mm dia. circular planters
- 4 Proposed dinning area
- 5 Proposed lounge area
- 6 Climbing plants on pergola



2.0 Planting Palette



Planting Palette

2.1 European Influence

Trees



Camellia sasanqua Cloud Paradise Pearl



Cupressus sempervirens 'glauca' Italian Pencil Pine



Magnolia x soulangeana Saucer Magnolia

Shrubs



Ajuga reptans 'Catlin's Giant' Bugleweed



Bergenia cordifolia Heartleaf Bergenia



Buxus sempervirens Common Boxwood

Shrubs



Clivia miniata 'Shademaster' Yellow Kaffir Lily



Helleborus orientalis Lenten Rose



Hosta plantaginea 'Grandiflora' Giant Hosta Lily



Hydrangea macrophylla 'White Ball' Hydrangea White Ball



Laurus nobilis Baby Bay Laurel



Viburnum tinus Laurustinus

Planting Palette

2.2 European Influence

Climbers



Ficus Pumila
Creeping Fig



Parthenocissus tricuspidata
Boston Ivy



Parthenocissus henryana
Chinese Virginia Creeper



Rosmarinus officinalis
Creeping Rosemary



Citrus limon 'Meyer Lemon'
Meyer Lemon Tree



Citrus latifolia
Lime tree

Herbs, Fruits and Edibles



Citrus sinensis 'Valencia Orange'
Valencia Orange



Origanum vulgare
Oregano



Punica granatum
Pomegranate



Salvia officinalis
Sage



Fragaria x ananassa
Strawberry



Thymus serpyllum 'Alba'
White Creeping Thyme

Planting Palette

2.3 Natives

Trees



Acacia pycnantha
Golden Wattle



Allocasuarina littoralis
Black Sheoak



Dicksonia antarctica
Soft Tree Fern



Eucalyptus viminalis
Manna gum



Eucalyptus yarraensis
Yarra Gum



Leptospermum lanigerum
Woolly Tea-Tree

Shrubs



Melaleuca ericifolia
Swamp Paperbark



Xanthorrhoea australis
Grass Tree



Acacia paradoxa
Hedge Wattle



Billardiera scandens
Apple Berry



Boronia nana var. *hyssopifolia*
Dwarf Boronia



Correa reflexa 'Dusky Bells'
Dusky Bells

Planting Palette

2.4 Natives

Shrubs



Daviesia Latifolia
Hop Bitter Pea



Dillwynia cinerascens
Grey Parrot Pea



Epacris longiflora
Fuchsia heath



Eutaxia microphylla
Common Eutaxia



Goodenia ovata
Goodenia



Hakea nodosa
Yellow Hakea



Hibbertia riparia
Erect Guinea Flower



Indigofera australis
Australian indigo



Kunzea ambigua
Amber Leaf Tick Bush



Leptospermum continentale
Prickly Tea-Tree



Leptospermum myrsinoides
Heath Tea-tree



Leucopogon virgatus
Common Beard-Heath

Planting Palette

2.5 Natives

Shrubs

Grasses, Herbs and Groundcovers



Pimelea linifolia
Slender Rice Flower



Arthropodium strictum
Chocolate Lily



Brachyscome graminea
Grass Daisy



Brunonia australis
Blue Pincushion



Carex appressa



Carpobrotus modestus
Inland Pigface



Chrysocephalum apiculatum
Common Everlasting



Crassula decumbens
Spreading Cassula



Dichondra repens
Kidney Weed



Eryngium vesiculosum
Amethyst Sea Holly



Gahnia sieberiana
Red fruit Saw-sedge



Leptorhynchos squamatus
Scaly Buttons

Planting Palette

2.6 Natives

Grasses, Herbs and Groundcovers



Chrysocephalum apiculatum
Common Everlasting



Lomandra Longfolia
Honey Reed



Microlaena stipoides
Weeping Grass



Pimelea 'White Jewel'
Rice Flower



Poa labillardierei
Tussock Grass



Stylidium armeria
Common triggerplant

Climbers



Themeda triandra 'Mingo'
Kangaroo Grass



Wahlenbergia gracilis
Naked Bluebell



Xanthorrhoea minor
Trunkless Grass Tree



Hardenbergia
Happy Wanderer



Kennedia prostrata
Running Postman



Thanks for your time.
We hope you like the seeds
we've planted.

Phillip Withers
284 Wellington St,
Collingwood, VIC 3066
phillipwithers.com
03 9077 5989
info@phillipwithers.com



Median Strip on west of Sturt and Lyons Street



Ballarat Toyota



Bakery Hill



Cnr Sturt & Dawson



Cnr Sturt & Dawson



Cnr Main & Dawson



Looking North East from Sturt Street



Dawson Street

7. GENERAL BUSINESS - MATTERS ARISING FROM THE AGENDA

8. CLOSE