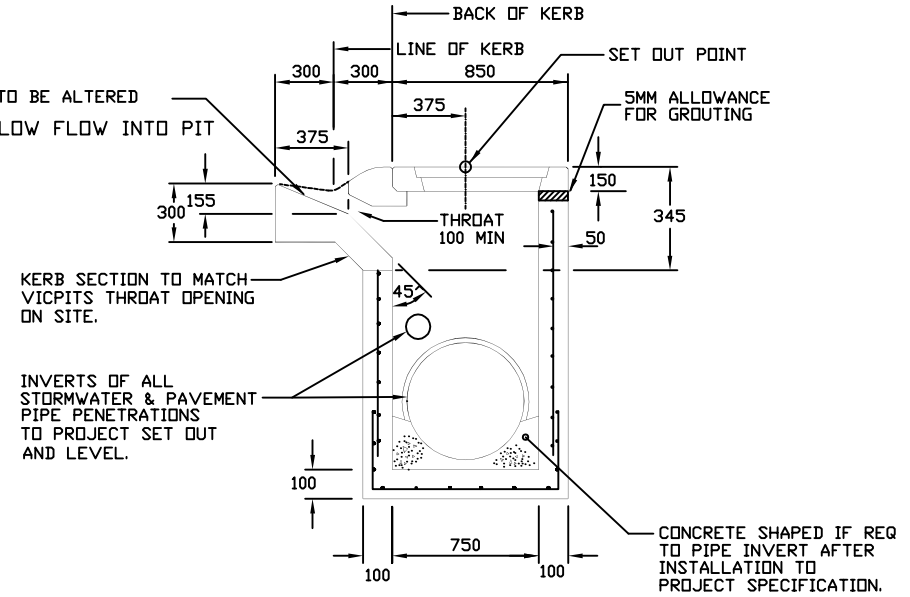


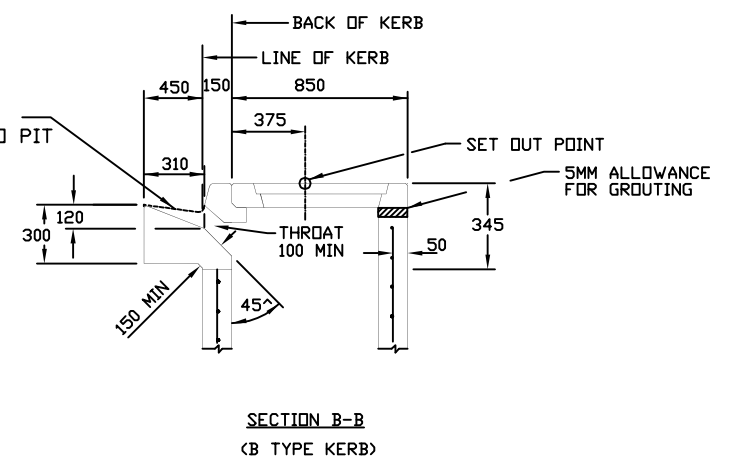
TRAY OF CHANNEL TO BE ALTERED AS SHOWN TO ALLOW FLOW INTO PIT



DEPTH	REINFORCEMENT	INTERNAL DIMENSION (mm)	ADDITIONAL INFORMATION
0-1200	F72	900 X 750	-
1200-2400	F92	900 X 900	STEP IRONS
2400-UP	F1218	900 X 900	LADDER

- NOTES:
- HAUNCHING MAY BE REQUIRED FOR PIPES OVER 450 DIA, REFER TO PIT SCHEDULE FOR SIZES OF SPECIFIC PITS. PITS WITH HAUNCHING IN TWO DIRECTIONS.
  - PITS ARE TO BE MANUFACTURED UNDER QUALITY PROCEDURES AND ENGINEERED COMPUTATIONS WHICH COMPLY WITH THE AUST ROADS BRIDGE DESIGN CODE 1992 WHICH STATE:
    - COMBINED FACTORED LATERAL PRESSURE AT ANY POINT AT THE ULTIMATE LIMIT STAGE SHALL BE NOT LESS THAN 5kPa
    - ADEQUATE DRAINAGE SHALL BE PROVIDED TO PIT WALLS TO AVOID HYDROSTATIC PRESSURE
    - VERTICAL LOAD 210 kN APPLIED ANYWHERE ON PIT
    - MINIMUM REINFORCEMENT AREA SHALL BE 150 MM /M
    - CONCRETE SHALL COMPLY WITH SECTION 610 OF VICROADS SPECIFICATIONS
  - REINFORCEMENT AND CONCRETE PLACEMENT AND INSTALLATION COMPLY WITH VICROADS 610, THE RELEVANT AUSTRALIAN STANDARD SPECIFICATIONS AND STRUCTURAL DESIGNS.

TRAY OF CHANNEL TO BE ALTERED AS SHOWN TO ALLOW FLOW INTO PIT



# CITY OF BALLARAT

ALL DIMENSIONS ARE IN MILLIMETRES	
No.	AMENDMENTS

Approved by: \_\_\_\_\_  
Date: \_\_\_\_\_

**PRE-CAST SIDE ENTRY PIT  
CONCRETE COVER-900mm INLET**



SCALE:  
NOT TO SCALE  
SHEET 1 OF 2  
DRAWING NO:  
SD-P1-1