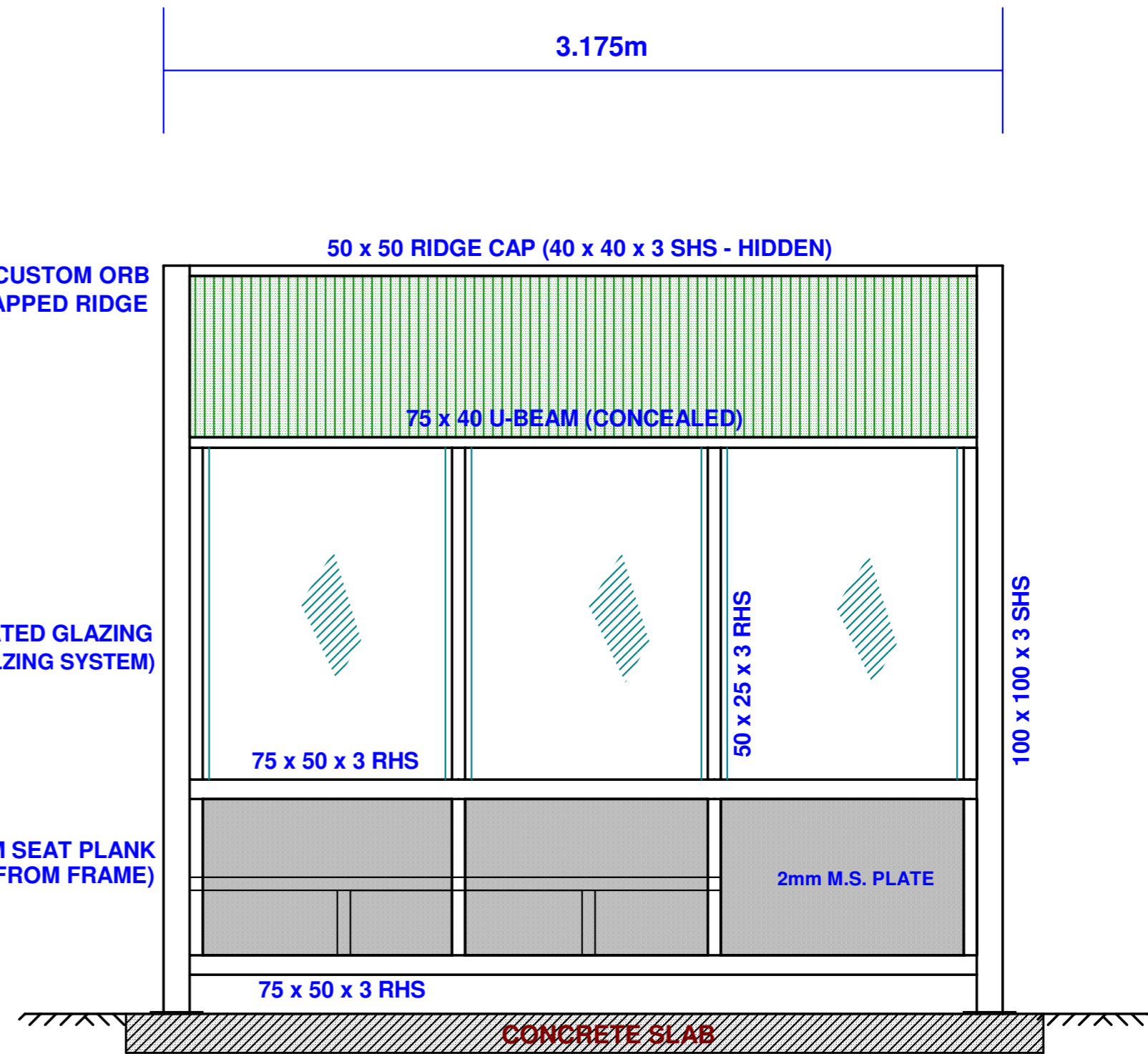


SIDE ELEVATION



FRONT ELEVATION

SLAB TO BE 25MPa CONCRETE
125mm THICK WITH F72 REO
PLACED CENTRALLY AND BEDDED ON
MIN 100mm COMPACTED CLASS 3 FCR.

NOTE:

THE SHELTERS ARE TO GENERALLY COMPLY WITH THE FOLLOWING MINIMUM REQUIREMENTS:

1. DIMENSIONS - 3175(L) x 1400(W) x 2900(H) WITH 700 ENDWALLS.
2. GLAZING - 10.38mm LAMINATED GLASS WITH ALCAN SPECIALISED GLAZING.
TOP 2/3 - LAMINATED GLASS, BOTTOM 1/3 - STEEL PANEL.
3. STRUCTURE - STEEL SUPPORT COLUMNS - 100 x 100 x 3 SHS
STEEL BEAMS - 75 x 50 x 3 RHS
STEEL VERTICAL STRUTS - 50 x 50/25 x 3 RHS
STEEL PANEL INFILLS - 2mm M.S. PLATE
4. ROOF STRUCTURE - STEEL MAIN FRAME - 50 x 50 x 6 ANGLE.
LATERAL BEAMS - 40 x 40 x 4 SHS
CLADDING - POWDER COATED CUSTOM ORB SHEETS WITH RIDGE CAP.
5. STEEL COATING - ALL STEEL TO BE HOT DIPPED GALVANISED
PRE-GALV WELDS COATED WITH 'ORAPI' ZINC RICH COATING.
6. FIXING - 6mm STEEL PLATES WITH (2)13mm HOLES FOR 12 x 75 DYNA BOLTS.
7. FINAL COATING - HERITAGE GREEN (WOODLAND GREY FOR CBA) HIGH FINISH
DOUBLE COATED EPOXY PAINT OR SIMILAR TO RESIST GRAFITTI
AND TO MATCH EXISTING CITY OF BALLARAT SHELTERS.
8. DRAINAGE - CONCEALED IN COLUMNS WITH DISCHARGE TO PAVEMENT.
9. SEATING - ALCAN EXTRUDED ALUMINIUM PLANK - APPROX 1830 LONG.
10. WHEELCHAIR - SHELTER DIMENSIONS AND SEATING MUST PROVIDE
MINIMUM SPACE OF 1300(L) x 800(W) FOR WHEELCHAIR AND
SIMILAR MOBILITY AIDS IN ACCORDANCE WITH
AS1428.2, 1992, CLAUSE 6.1.
11. SHELTER LEGS - ALL LEGS OF BUS SHELTER TO BE ADJUSTABLE.
(TO BE BOLTED TO CONCRETE AS PER ITEM 6 ABOVE)
12. STRIP FOOTINGS - WHEN REQUIRED (x2) TO BE 1000 x 400 x 350(D).
FINISHED SURFACE MATERIAL TO CONCEAL CONCRETE FOUNDATION.

ISSUE	AMENDMENT	DATE

EVERY CARE HAS BEEN TAKEN TO ENSURE THAT THE INFORMATION SHOWN ON THIS DRAWING IS ACCURATE HOWEVER SOME VARIATIONS FROM RECORDS MAY EXIST, AND COMPLETE ACCURACY CANNOT BE GUARANTEED.

NOTE: ALL DIMENSIONS ARE IN MILLIMETRES.

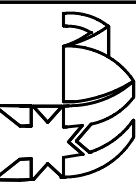
SCALES

DO NOT SCALE THIS DRAWING

WARNING: THE LOCATION OF U/GROUND SERVICES SHOWN IS BASED ON INFORMATION SUPPLIED BY OTHER AUTHORITIES AND SHOULD BE PROVEN ON SITE. ALL WORKS NEAR SERVICES SHALL COMPLY WITH REQUIREMENTS OF RELEVANT AUTHORITY.

SURVEY:	DATE:
DRAWN:	DATE:
DESIGN:	DATE:
FILES:	

**CITY OF BALLARAT
'KEW' STYLE BUS SHELTER
(SHORT ENDS)**



TEAM LEADER

MANAGER

DRAWING No.	KEW STYLE
SHEET No.	