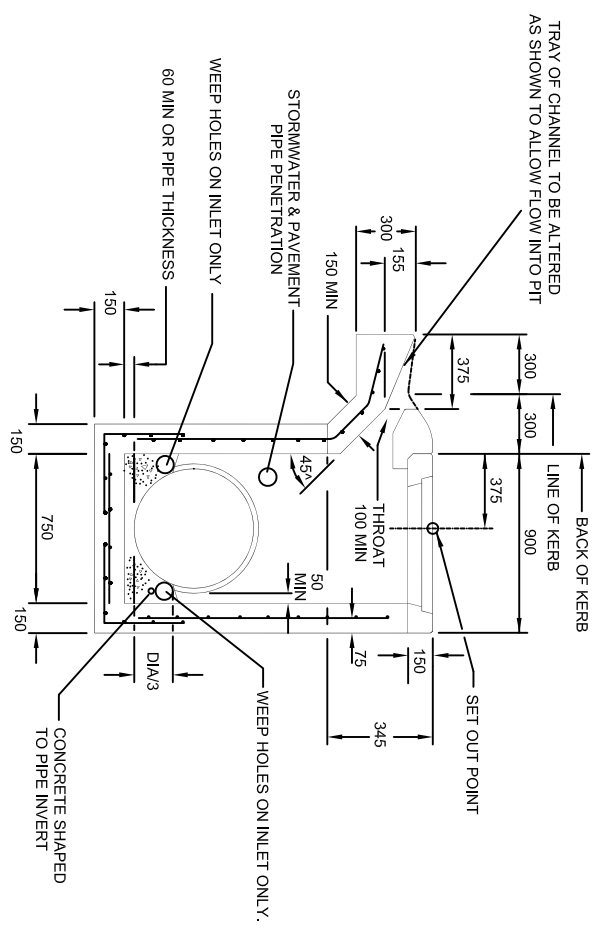


PLAN
(SM OR B TYPE KERB)

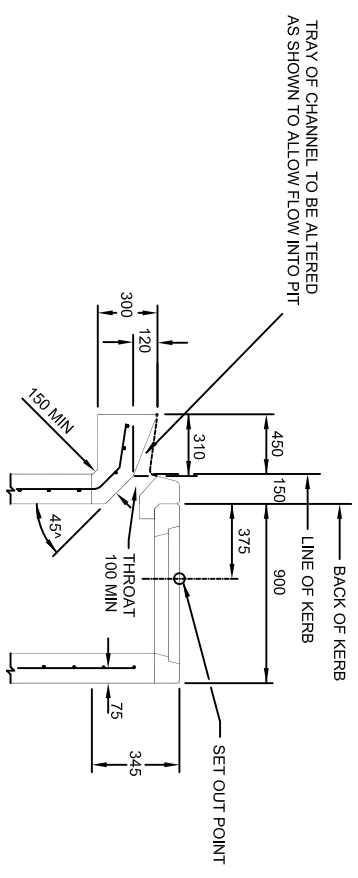
DEPTH	REINFORCEMENT	INTERNAL DIMENSION (mm)	ADDITIONAL INFORMATION
0-1200	-	900 X 750	-
1200-2400	F92	900 X 900	STEP IRONS
2400-UP	F1218	900 X 900	LADDER

NOTES:

- HAUNCHING MAY BE REQUIRED FOR PIPES OVER 450 DIA. REFER TO PIT SCHEDULE FOR SIZES OF SPECIFIC PITS. PITS WITH HAUNCHING IN TWO DIRECTIONS REQUIRE SPECIAL STRUCTURAL DESIGN.
- PIT REINFORCEMENT - F92 FABRIC. FABRIC IN SHAFT SHALL HAVE THE MAIN BARS POSITIONED HORIZONTALLY. LAPS TO BE 300 MIN. CLEAR COVER TO BE 50 MIN. CORNER RETURN REINFORCEMENT MAY BE FABRIC OR EQUIVALENT BARS. BARS GRADE 400Y TO AS 1302/1991. FABRICS TO AS 1304/1991. CONCRETE GRADE TO BE 25 MPa.



SECTION B-B
PIT TYPE SM
(SM TYPE KERB)



SECTION B-B
PIT TYPE B
(B TYPE KERB)

CITY OF BALLARAT

Approved by:

13 8 18

ALL DIMENSIONS ARE IN MILLIMETRES
Notes on weepholes amended

No.	AMENDMENTS

Date:

INSITU SIDE ENTRY PIT CONCRETE COVER-900mm INLET



CITY OF BALLARAT
SCALE: NOT TO SCALE
SHEET 2 OF 2
DRAWING NO: SD-P1-2