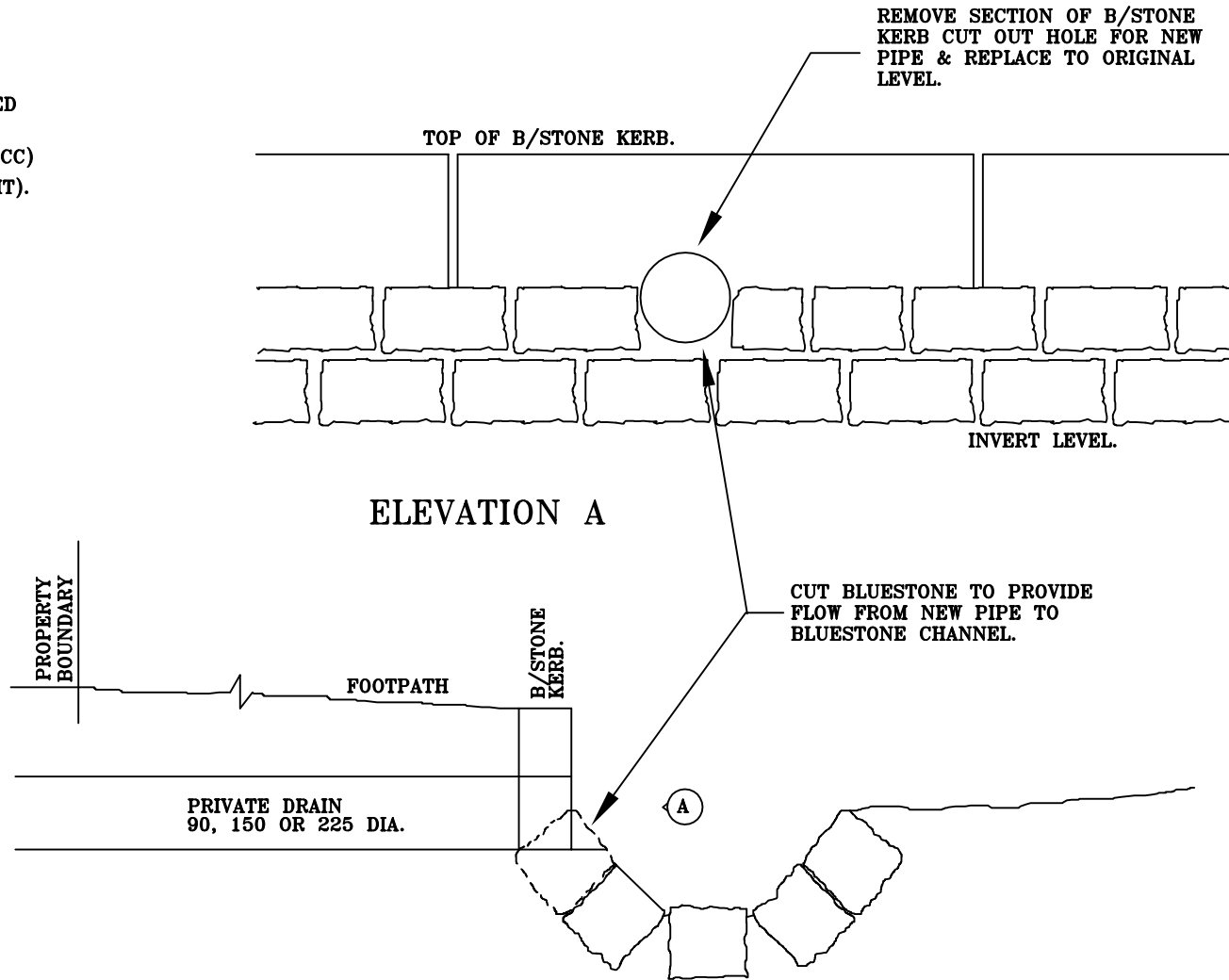


NOTES:-

1. PRIVATE DRAINS SHALL BE CONNECTED TO BLUESTONE KERB & CHANNEL AT THE DISCRETION OF THE GMP. (BCC) (IN CONJUNCTION WITH WORKS PERMIT).
2. STEEL CHANNEL TO HAVE SLOPE OF 1 IN 30 ACROSS FOOTPATH (U.N.O.).



SECTION OF BLUESTONE KERB & CHANNEL

CITY OF BALLARAT

No.	AMENDMENTS	DATE

Approved by:

Date:

PRIVATE DRAINS 90, 150 & 225mm DIA.
CONNECTION TO BLUESTONE CHANNEL



SCALE:
NOT TO SCALE
SHEET 2 OF 3
DRAWING NO:
SD-D7-3