

DB	POLES	CIRCUIT
N02	51	L1
N02	52	L1
N02	53	L1
N02	54	L1
N02	55	L1
N02	56	L1
N02	57	L2
N02	58	L2
N02	59	L2
N02	60	L2
N02	61	L2
N02	62	L2
N02	63	L2
N02	64	L3
N02	65	L3
N02	66	L3
N02	67	L3
N02	68	L3
N02	68	L3
N02	70	L3

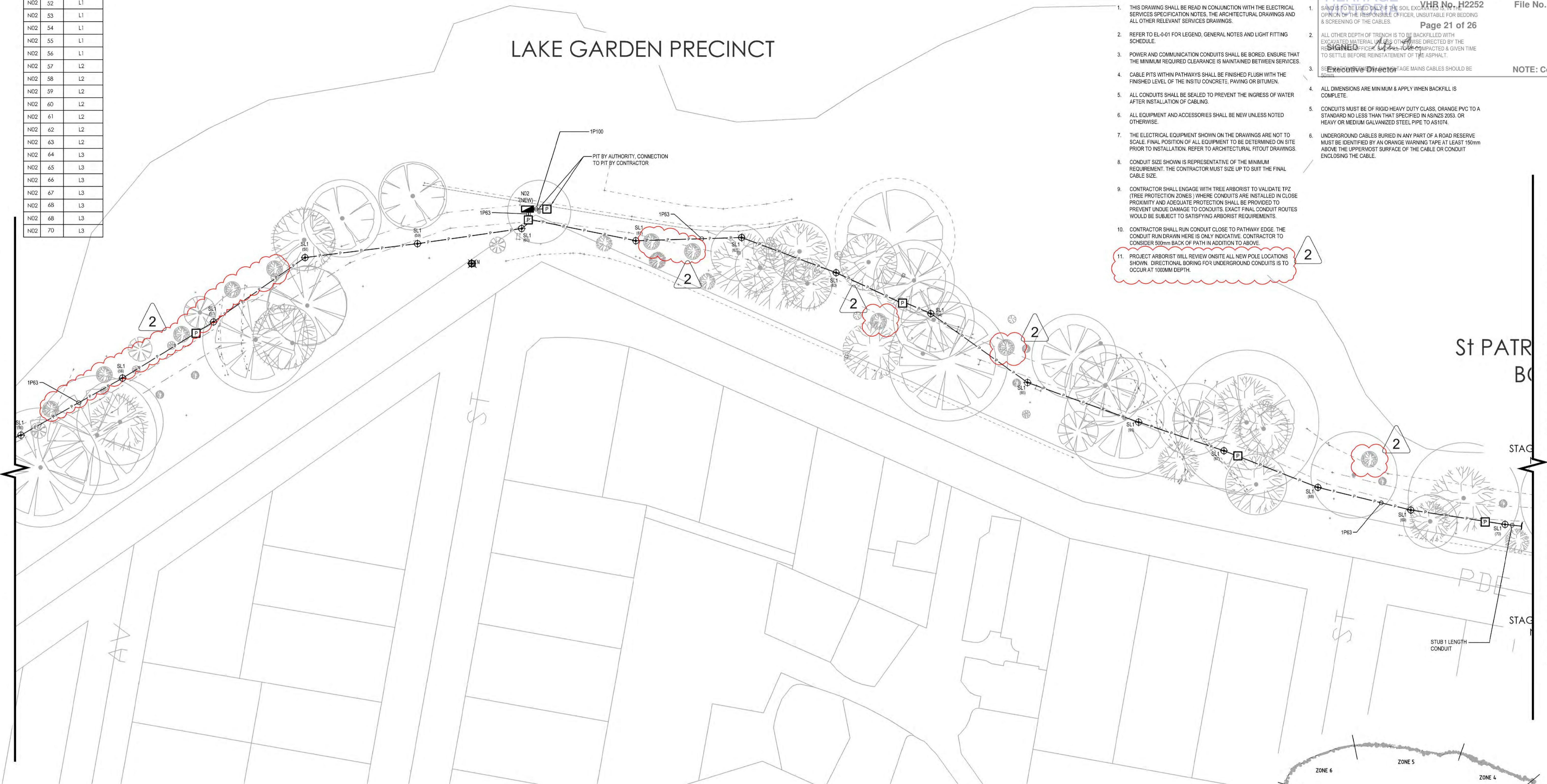
LAKE GARDEN PRECINCT

NOTES

- THIS DRAWING SHALL BE READ IN CONJUNCTION WITH THE ELECTRICAL SERVICES SPECIFICATION NOTES, THE ARCHITECTURAL DRAWINGS AND ALL OTHER RELEVANT SERVICES DRAWINGS.
- REFER TO EL-01 FOR LEGEND, GENERAL NOTES AND LIGHT FITTING SCHEDULE.
- POWER AND COMMUNICATION CONDUITS SHALL BE BORED. ENSURE THAT THE MINIMUM REQUIRED CLEARANCE IS MAINTAINED BETWEEN SERVICES.
- CABLE PITS WITHIN PATHWAYS SHALL BE FINISHED FLUSH WITH THE FINISHED LEVEL OF THE IN-SITU CONCRETE, PAVING OR BITUMEN.
- ALL CONDUITS SHALL BE SEALED TO PREVENT THE INGRESS OF WATER AFTER INSTALLATION OF CABLING.
- ALL EQUIPMENT AND ACCESSORIES SHALL BE NEW UNLESS NOTED OTHERWISE.
- THE ELECTRICAL EQUIPMENT SHOWN ON THE DRAWINGS ARE NOT TO SCALE. FINAL POSITION OF ALL EQUIPMENT TO BE DETERMINED ON SITE PRIOR TO INSTALLATION. REFER TO ARCHITECTURAL FITOUT DRAWINGS.
- CONDUIT SIZE SHOWN IS REPRESENTATIVE OF THE MINIMUM REQUIREMENT. THE CONTRACTOR MUST SIZE UP TO SUIT THE FINAL CABLE SIZE.
- CONTRACTOR SHALL ENGAGE WITH TREE ARBORIST TO VALIDATE TPZ (TREE PROTECTION ZONES) WHERE CONDUITS ARE INSTALLED IN CLOSE PROXIMITY AND ADEQUATE PROTECTION SHALL BE PROVIDED TO PREVENT UNDUKE DAMAGE TO CONDUITS. EXACT FINAL CONDUIT ROUTES WOULD BE SUBJECT TO SATISFYING ARBORIST REQUIREMENTS.
- CONTRACTOR SHALL RUN CONDUIT CLOSE TO PATHWAY EDGE. THE CONDUIT RUN DRAWN HERE IS ONLY INDICATIVE. CONTRACTOR TO CONSIDER 500mm BACK OF PATH IN ADDITION TO ABOVE.
- PROJECT ARBORIST WILL REVIEW ONSITE ALL NEW POLE LOCATIONS SHOWN. DIRECTIONAL BORING FOR UNDERGROUND CONDUITS IS TO OCCUR AT 1000MM DEPTH.

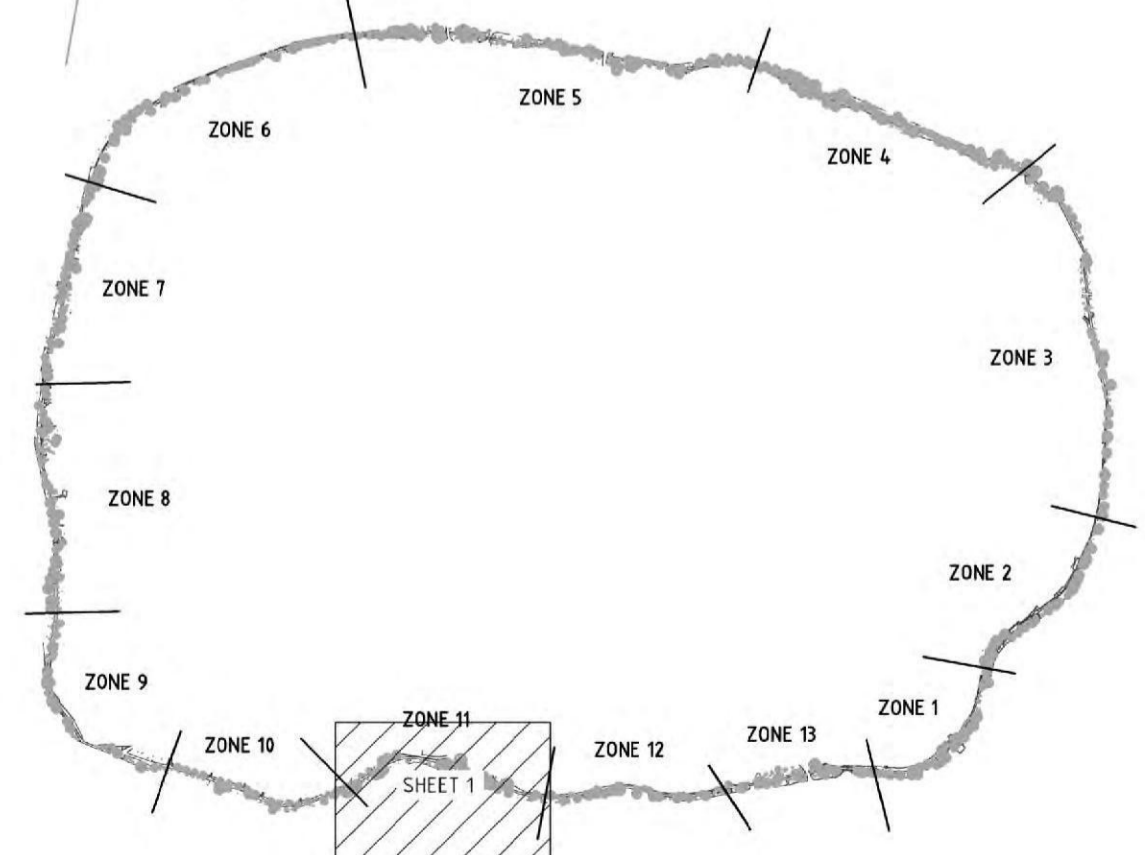
FOR CONTINUATION REFER TO DRAWING EL-2-17 (ZONE 10 - SHEET 1)

FOR CONTINUATION REFER TO DRAWING EL-2-19 (ZONE 12 - SHEET 1)



WARNING
 BEWARE OF NEW AND EXISTING UNDERGROUND SERVICES

THE LOCATIONS OF NEW AND EXISTING UNDERGROUND SERVICES ARE APPROXIMATE ONLY AND THEIR EXACT POSITION SHOULD BE PROVEN ON SITE. NO GUARANTEE IS GIVEN THAT ALL EXISTING SERVICES ARE SHOWN. IT IS THE CONTRACTORS RESPONSIBILITY TO VERIFY LOCATION AND DEPTH OF ALL NEW AND EXISTING UNDERGROUND SERVICES PRIOR TO CONSTRUCTION WORK. THE CONTRACTOR SHALL VISIT THE SITE TO ASCERTAIN THE TRUE NATURE OF THE WORKS. NO CLAIMS FOR EXTRAS WILL BE ALLOWED FOR THROUGH NEGLIGENCE OF THIS ADVICE. COORDINATE INVERT LEVEL AND LOCATION OF NEW AND EXISTING SERVICES TO AVOID CLASHES WITH STRUCTURAL ELEMENTS AND OTHER SERVICES OF OTHER TRADES BEFORE COMMENCING ANY WORK ON SITE.



KEY PLAN

REV	DESCRIPTION	DRAWN	APPD	DATE
2	ISSUED FOR CONSTRUCTION	TRS	JPK	07.06.22
1	ISSUED FOR CONSTRUCTION	TRS	JPK	13.04.22

REPRODUCTION OF DRAWINGS
 THE DRAWINGS HAVE BEEN DOCUMENTED IN COLOUR. AS SUCH, THE DRAWINGS ARE REQUIRED TO BE PRINTED IN COLOUR. FAILURE TO DO SO MAY RESULT IN LOSS OF INFORMATION. BLACK & WHITE PRINTING MAY BE USED IF SPECIFIC BLACK & WHITE DOCUMENTS HAVE BEEN OBTAINED FROM WGE.

CITY OF BALLARAT

ARCHITECT/CIENT

LAKE WENDOUREE, BALLARAT, STEVE MONEGHETTI TRACK PUBLIC LIGHTING

ZONE 11 - PROPOSED LIGHTING & POWER LAYOUT - STAGE 4 SHEET 1

PROJECT TITLE

45683-EL-2-18.dwg

CONSTRUCTION ISSUE

Stantec

ELECTRICAL SERVICES

1:500 45683 EL-2-18 2

SCALE @ A1 PROJECT No DRAWING No REV

7/06/2022 5:07:37 PM

DB	POLES	CIRCUIT
P15	71	L1
P15	72	L1
P15	73	L1
P15	74	L1
P15	75	L1
P15	76	L1
P15	77	L2
P15	78	L2
P15	79	L2
P15	80	L2
P15	81	L2
P15	82	L2
P15	83	L2

HERITAGE VICTORIA HERITAGE VICTORIA HERITAGE VICTORIA

Permit No. P33955

09/09/2022

UNDERGROUND SERVICES NOTES

Page 22 of 26

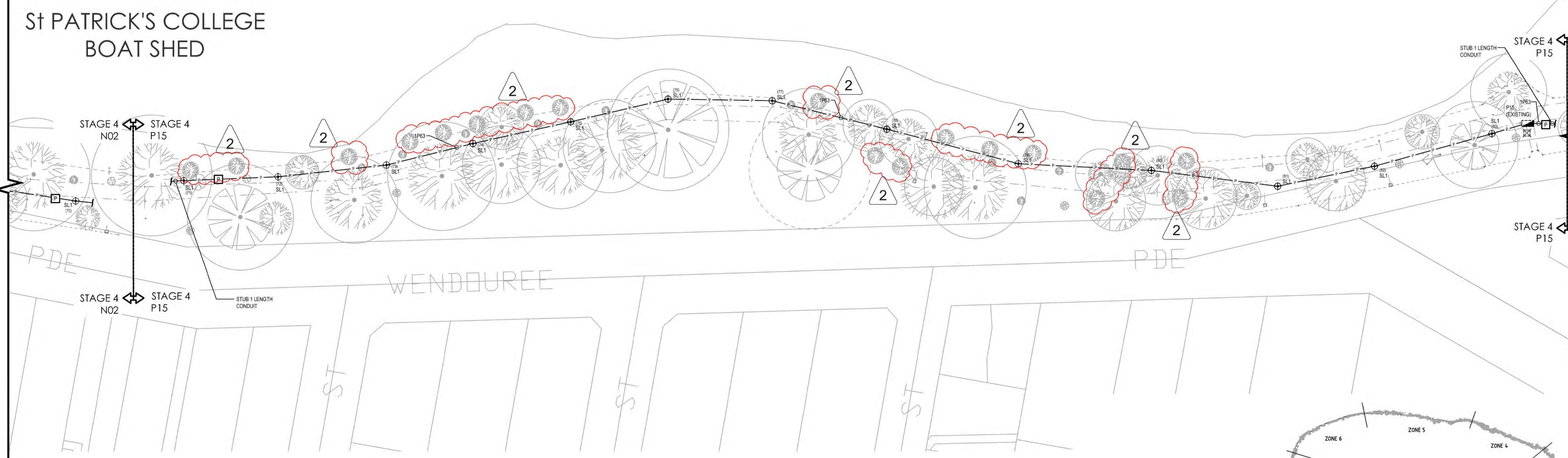
SIGNED: [Signature]

Executive Director

NOTE: Conditions apply.

- ### NOTES
- THIS DRAWING SHALL BE READ IN CONJUNCTION WITH THE ELECTRICAL SERVICES SPECIFICATION NOTES, THE ARCHITECTURAL DRAWINGS AND ALL OTHER RELEVANT SERVICES DRAWINGS.
 - REFER TO EL-0-01 FOR LEGEND, GENERAL NOTES AND LIGHT FITTING SCHEDULE.
 - POWER AND COMMUNICATION CONDUITS SHALL BE BORED. ENSURE THAT THE MINIMUM REQUIRED CLEARANCE IS MAINTAINED BETWEEN SERVICES.
 - CABLE PITS WITHIN PATHWAYS SHALL BE FINISHED FLUSH WITH THE FINISHED LEVEL OF THE INSITU CONCRETE, PAVING OR BITUMEN.
 - ALL CONDUITS SHALL BE SEALED TO PREVENT THE INGRESS OF WATER AFTER INSTALLATION OF CABLING.
 - ALL EQUIPMENT AND ACCESSORIES SHALL BE NEW UNLESS NOTED OTHERWISE.
 - THE ELECTRICAL EQUIPMENT SHOWN ON THE DRAWINGS ARE NOT TO SCALE. FINAL POSITION OF ALL EQUIPMENT TO BE DETERMINED ON SITE PRIOR TO INSTALLATION. REFER TO ARCHITECTURAL FITOUT DRAWINGS.
 - CONDUIT SIZE SHOWN IS REPRESENTATIVE OF THE MINIMUM REQUIREMENT. THE CONTRACTOR MUST SIZE UP TO SUIT THE FINAL CABLE SIZE.
 - CONTRACTOR SHALL ENGAGE WITH TREE ARBORIST TO VALIDATE TPZ (TREE PROTECTION ZONES) WHERE CONDUITS ARE INSTALLED IN CLOSE PROXIMITY AND ADEQUATE PROTECTION SHALL BE PROVIDED TO PREVENT UNDUE DAMAGE TO CONDUITS. EXACT FINAL CONDUIT ROUTES WOULD BE SUBJECT TO SATISFYING ARBORIST REQUIREMENTS.
 - CONTRACTOR SHALL RUN CONDUIT CLOSE TO PATHWAY EDGE. THE CONDUIT RUN DRAWN HERE IS ONLY INDICATIVE. CONTRACTOR TO CONSIDER 500mm BACK OF PATH IN ADDITION TO ABOVE.
 - PROJECT ARBORIST WILL REVIEW ON SITE ALL NEW POLE LOCATIONS SHOWN. DIRECTIONAL BORING FOR UNDERGROUND CONDUITS IS TO OCCUR AT 1000MM DEPTH.

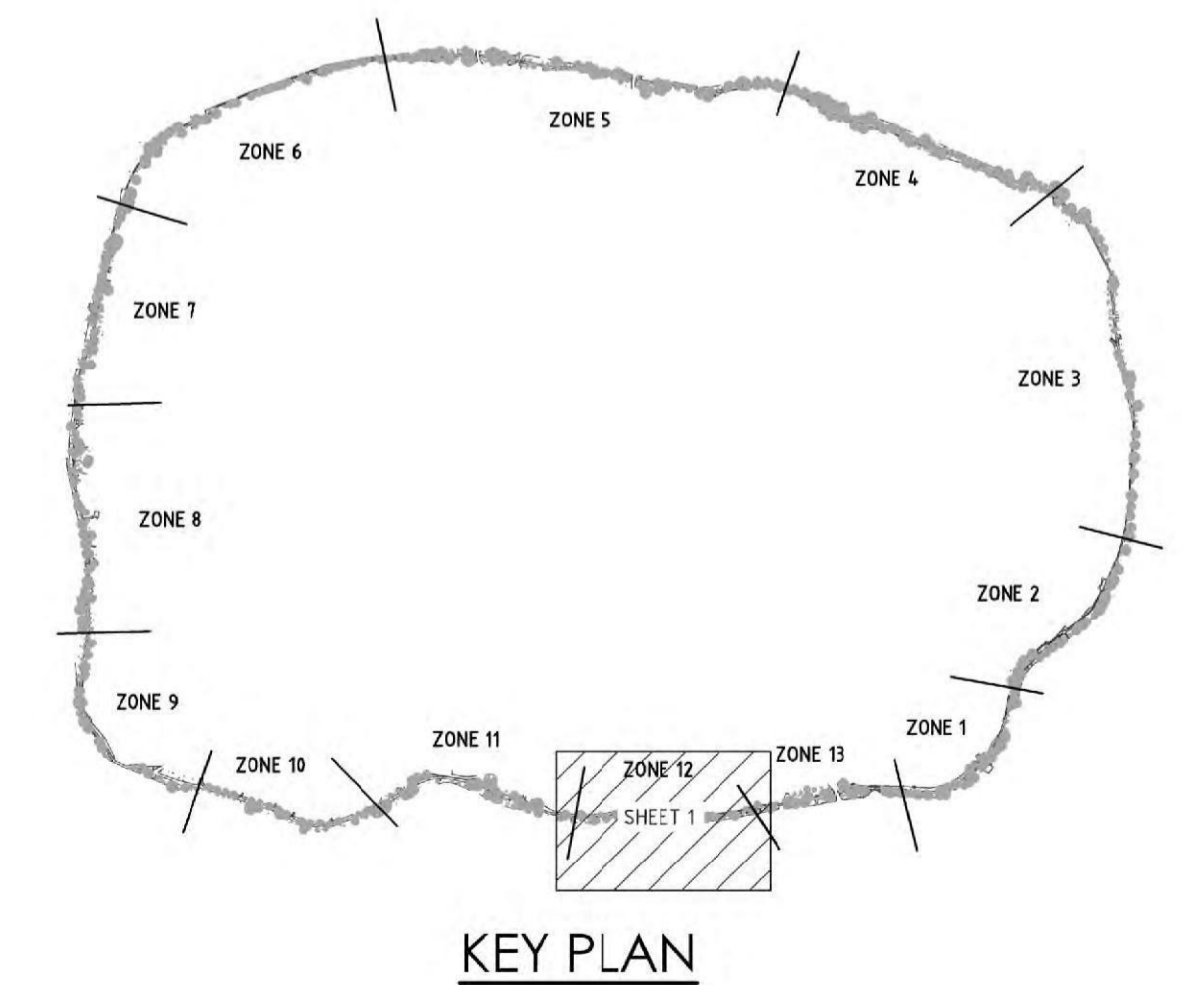
FOR CONTINUATION REFER TO DRAWING EL-2-18 (ZONE 11 - SHEET 1)



FOR CONTINUATION REFER TO DRAWING EL-2-20 (ZONE 13 - SHEET 1)

WARNING
BEWARE OF NEW AND EXISTING UNDERGROUND SERVICES

THE LOCATIONS OF NEW AND EXISTING UNDERGROUND SERVICES ARE APPROXIMATE ONLY AND THEIR EXACT POSITION SHOULD BE PROVEN ON SITE. NO GUARANTEE IS GIVEN THAT ALL EXISTING SERVICES ARE SHOWN. IT IS THE CONTRACTORS RESPONSIBILITY TO VERIFY LOCATION AND DEPTH OF ALL NEW AND EXISTING UNDERGROUND SERVICES PRIOR TO CONSTRUCTION WORK. THE CONTRACTOR SHALL VISIT THE SITE TO ASCERTAIN THE TRUE NATURE OF THE WORKS. NO CLAIMS FOR EXTRAS WILL BE ALLOWED FOR THROUGH NEGLIGENCE OF THIS ADVICE. COORDINATE INVERT LEVEL AND LOCATION OF NEW AND EXISTING SERVICES TO AVOID CLASHES WITH STRUCTURAL ELEMENTS AND OTHER SERVICES OF OTHER TRADES BEFORE COMMENCING ANY WORK ON SITE.



REV	DESCRIPTION	DRAWN	APPD	DATE
2	ISSUED FOR CONSTRUCTION	TRS	JPK	07.06.22
1	ISSUED FOR CONSTRUCTION	TRS	JPK	13.04.22

REPRODUCTION OF DRAWINGS

THE DRAWINGS HAVE BEEN DOCUMENTED IN COLOUR. AS SUCH, THE DRAWINGS ARE REQUIRED TO BE PRINTED IN COLOUR. FAILURE TO DO SO MAY RESULT IN LOSS OF INFORMATION. BLACK & WHITE PRINTING MAY BE USED IF SPECIFIC BLACK & WHITE DOCUMENTS HAVE BEEN OBTAINED FROM WGE.

CITY OF BALLARAT

ARCHITECT/CIENT

LAKE WENDOUREE, BALLARAT, STEVE MONEGHETTI TRACK PUBLIC LIGHTING

ZONE 12 - PROPOSED LIGHTING & POWER LAYOUT - STAGE 4 SHEET 1

PROJECT TITLE

45683-EL-2-19.dwg

CONSTRUCTION ISSUE

Stantec

ELECTRICAL SERVICES

1:500 45683 EL-2-19 2

SCALE @ A1 PROJECT No DRAWING No REV

7/06/2022 5:09:08 PM

DB	POLES	CIRCUIT	DB	POLES	CIRCUIT
P15	71	L1	P16	84	L1
P15	72	L1	P16	85	L1
P15	73	L1	P16	86	L1
P15	74	L1	P16	87	L1
P15	75	L1	P16	88	L2
P15	76	L1	P16	89	L2
P15	77	L2	P16	90	L2
P15	78	L2	P16	91	L2
P15	79	L2			
P15	80	L2			
P15	81	L2			
P15	82	L2			
P15	83	L2			

NOTES

- THIS DRAWING SHALL BE READ IN CONJUNCTION WITH THE ELECTRICAL SERVICES SPECIFICATION NOTES, THE ARCHITECTURAL DRAWINGS AND ALL OTHER RELEVANT SERVICES DRAWINGS.
- REFER TO EL-041 FOR LEGEND, GENERAL NOTES AND LIGHT FITTING SCHEDULE.
- POWER AND COMMUNICATION CONDUITS SHALL BE BORED. ENSURE THAT THE MINIMUM REQUIRED CLEARANCE IS MAINTAINED BETWEEN SERVICES.
- CABLE PITS WITHIN PATHWAYS SHALL BE FINISHED FLUSH WITH THE FINISHED LEVEL OF THE IN SITU CONCRETE, PAVING OR BITUMEN.
- ALL CONDUITS SHALL BE SEALED TO PREVENT THE INGRESS OF WATER AFTER INSTALLATION OF CABLING.
- ALL EQUIPMENT AND ACCESSORIES SHALL BE NEW UNLESS NOTED OTHERWISE.
- THE ELECTRICAL EQUIPMENT SHOWN ON THE DRAWINGS ARE NOT TO SCALE. FINAL POSITION OF ALL EQUIPMENT TO BE DETERMINED ON SITE PRIOR TO INSTALLATION. REFER TO ARCHITECTURAL FITOUT DRAWINGS.
- CONDUIT SIZE SHOWN IS REPRESENTATIVE OF THE MINIMUM REQUIREMENT. THE CONTRACTOR MUST SIZE UP TO SUIT THE FINAL CABLE SIZE.
- CONTRACTOR SHALL ENGAGE WITH TREE ARBORIST TO VALIDATE TPZ (TREE PROTECTION ZONES) WHERE CONDUITS ARE INSTALLED IN CLOSE PROXIMITY AND ADEQUATE PROTECTION SHALL BE PROVIDED TO PREVENT UNDE DAMAGE TO CONDUITS. EXACT FINAL CONDUIT ROUTES WOULD BE SUBJECT TO SATISFYING ARBORIST REQUIREMENTS.
- CONTRACTOR SHALL RUN CONDUIT CLOSE TO PATHWAY EDGE. THE CONDUIT RUN DRAWN HERE IS ONLY INDICATIVE. CONTRACTOR TO CONSIDER 50mm BACK OF PATH IN ADDITION TO ABOVE.
- PROJECT ARBORIST WILL REVIEW ON SITE ALL NEW POLE LOCATIONS SHOWN. DIRECTIONAL BORING FOR UNDERGROUND CONDUITS IS TO OCCUR AT 1000MM DEPTH.

UNDERGROUND SERVICES NOTES

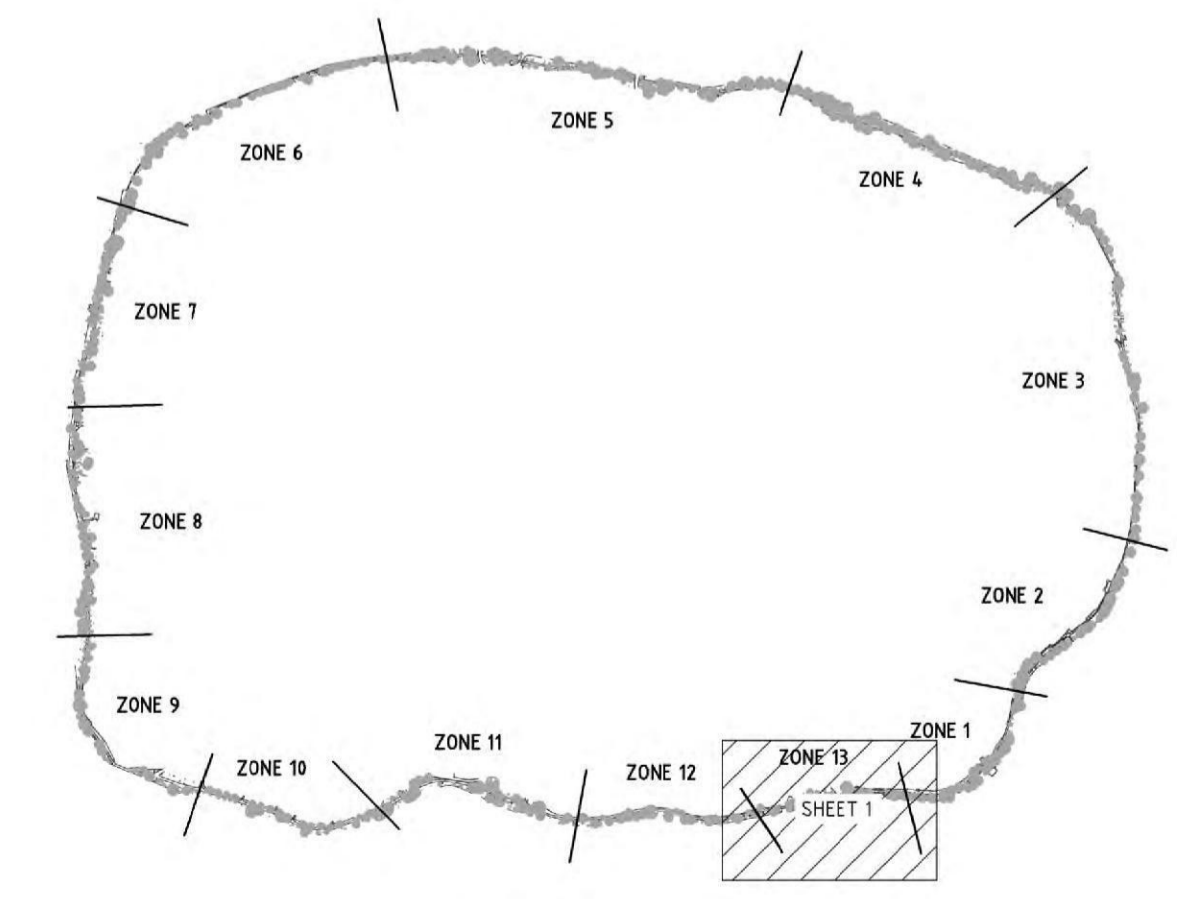
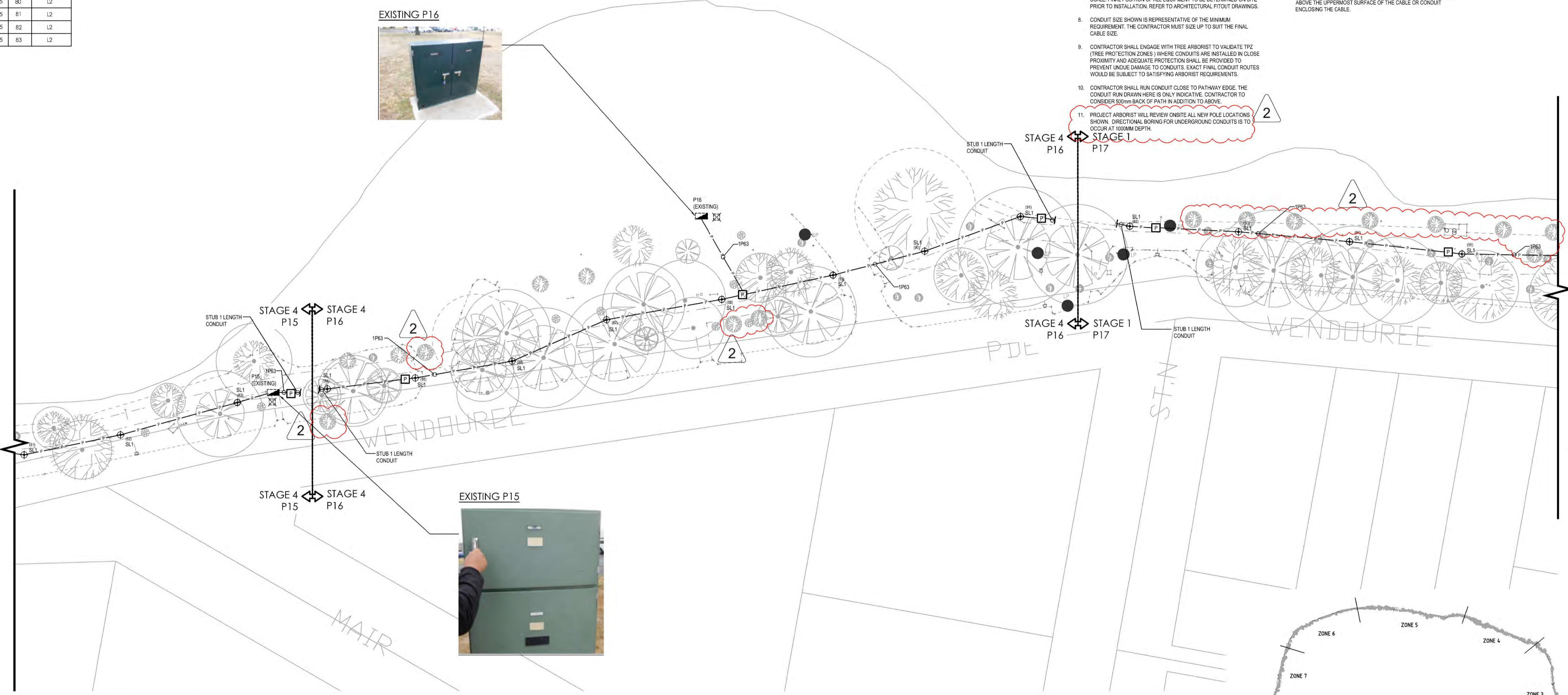
- SAND IS TO BE USED ONLY IF THE SOIL EXCAVATED IS IN THE OPINION OF THE RESPONSIBLE OFFICER UNSUITABLE FOR BEDDING & SCREENING OF THE CABLES.
- ALL OTHER DEPTH OF TRENCH IS TO BE BACKFILLED WITH EXCAVATED MATERIAL UNLESS OTHERWISE DIRECTED BY THE RESPONSIBLE OFFICER. FULL TRENCH COMPACT & GIVEN TIME TO SETTLE BEFORE RESTATEMENT OF THE ASPHALT.
- SEPARATION BETWEEN LOW VOLTAGE MAINS CABLES SHOULD BE 50mm.
- ALL DIMENSIONS ARE MINIMUM & APPLY WHEN BACKFILL IS COMPLETE.
- CONDUITS MUST BE OF RIGID HEAVY DUTY CLASS, ORANGE PVC TO A STANDARD NO LESS THAN THAT SPECIFIED IN AS/NZS 2053 OR HEAVY OR MEDIUM GALVANIZED STEEL PIPE TO AS1074.
- UNDERGROUND CABLES BURIED IN ANY PART OF A ROAD RESERVE MUST BE IDENTIFIED BY AN ORANGE WARNING TAPE AT LEAST 150mm ABOVE THE UPPERMOST SURFACE OF THE CABLE OR CONDUIT ENCLOSED THE CABLE.

BALLARAT YACHT CLUB



FOR CONTINUATION REFER TO DRAWING EL-2-19 (ZONE 12 - SHEET 1)

FOR CONTINUATION REFER TO DRAWING EL-2-01 (ZONE 1 - SHEET 1)



KEY PLAN

WARNING
 BEWARE OF NEW AND EXISTING UNDERGROUND SERVICES
 THE LOCATIONS OF NEW AND EXISTING UNDERGROUND SERVICES ARE APPROXIMATE ONLY AND THEIR EXACT POSITION SHOULD BE PROVEN ON SITE. NO GUARANTEE IS GIVEN THAT ALL EXISTING SERVICES ARE SHOWN. IT IS THE CONTRACTOR'S RESPONSIBILITY TO VERIFY LOCATION AND DEPTH OF ALL NEW AND EXISTING UNDERGROUND SERVICES PRIOR TO CONSTRUCTION WORK. THE CONTRACTOR SHALL VISIT THE SITE TO ASCERTAIN THE TRUE NATURE OF THE WORKS. NO CLAIMS FOR EXTRAS WILL BE ALLOWED FOR THROUGH NEGLIGENCE OF THIS ADVICE. COORDINATE INVERT LEVEL AND LOCATION OF NEW AND EXISTING SERVICES TO AVOID CLASHES WITH STRUCTURAL ELEMENTS AND OTHER SERVICES OF OTHER TRADES BEFORE COMMENCING ANY WORK ON SITE.

REPRODUCTION OF DRAWINGS
 THE DRAWINGS HAVE BEEN DOCUMENTED IN COLOUR. AS SUCH, THE DRAWINGS ARE REQUIRED TO BE PRINTED IN COLOUR. FAILURE TO DO SO MAY RESULT IN LOSS OF INFORMATION. BLACK & WHITE PRINTING MAY BE USED IF SPECIFIC BLACK & WHITE DOCUMENTS HAVE BEEN OBTAINED FROM WGE.

CITY OF BALLARAT

LAKE WENDOUREE, BALLARAT, STEVE MONEGHETTI TRACK PUBLIC LIGHTING
 ZONE 13 - PROPOSED LIGHTING & POWER LAYOUT - STAGE 4 SHEET 1

PROJECT TITLE

45683-EL-2-20.dwg

CONSTRUCTION ISSUE
 ELECTRICAL SERVICES

Stantec

1:500 45683 EL-2-20 2

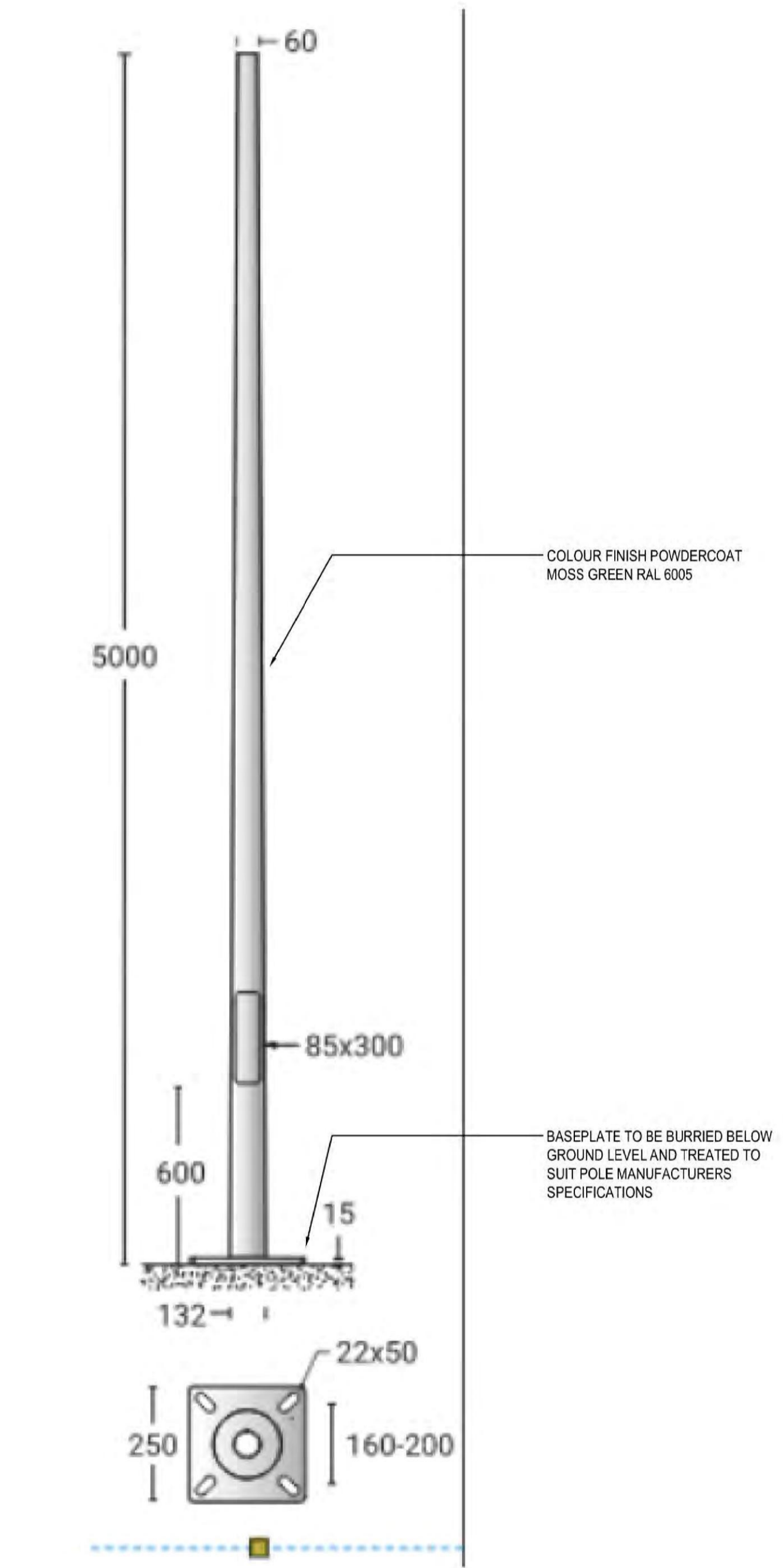
SCALE @ A1 PROJECT No DRAWING No REV

7/06/2022 5:10:32 PM

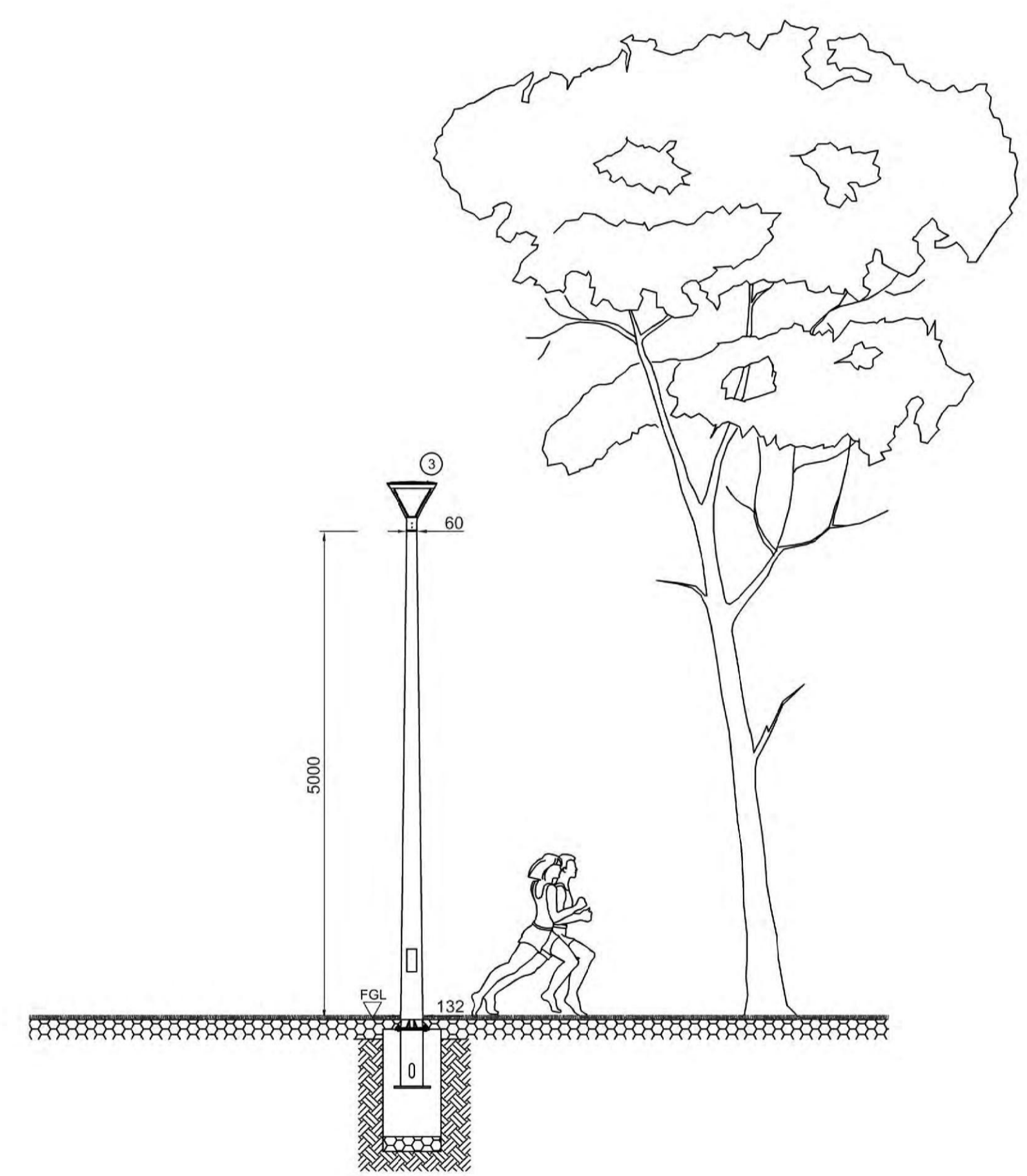
REV	DESCRIPTION	DRAWN	APPD	DATE
2	ISSUED FOR CONSTRUCTION	TRS	JPK	07.06.22
1	ISSUED FOR CONSTRUCTION	TRS	JPK	13.04.22

UNDERGROUND SERVICES NOTES

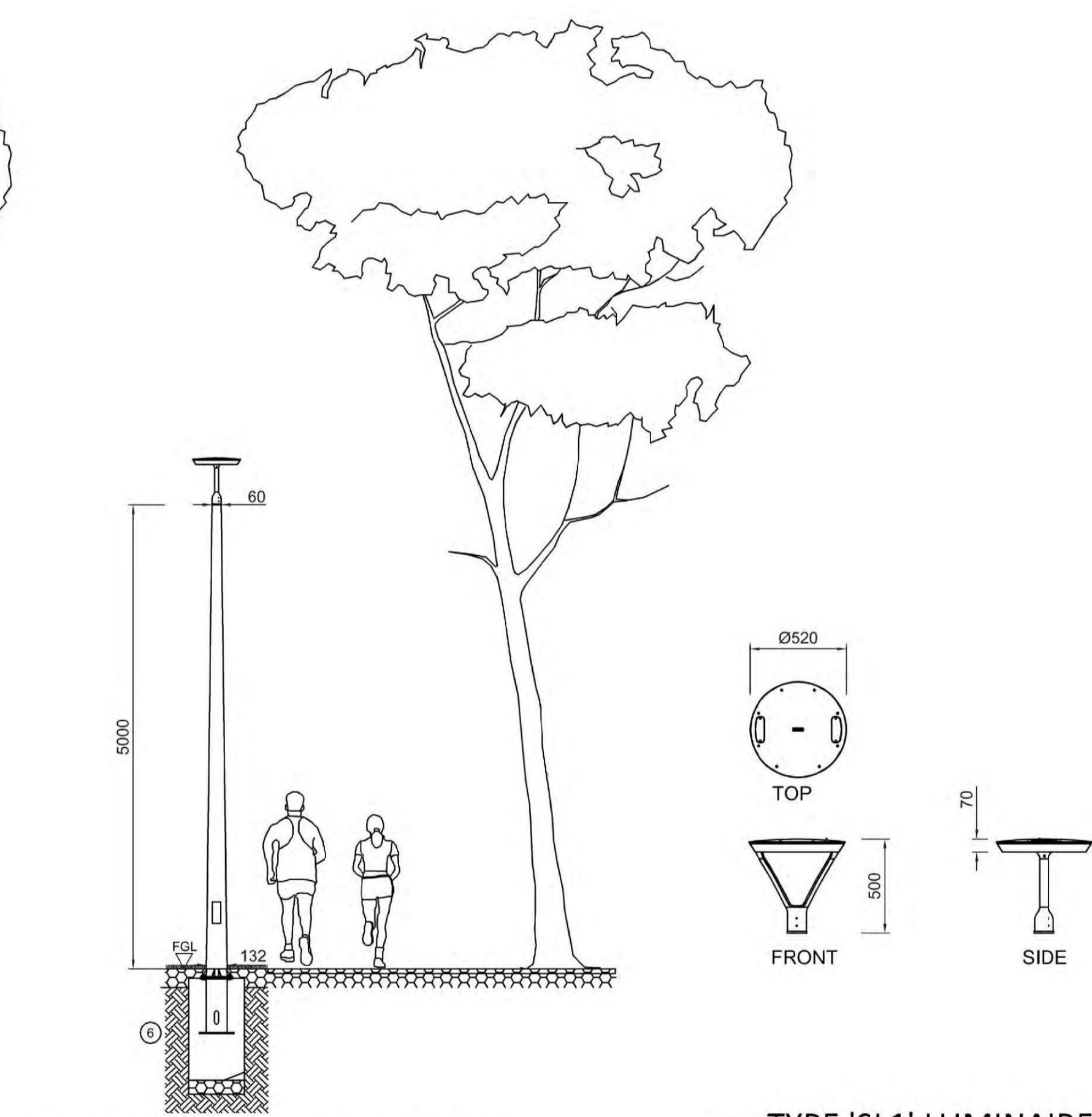
- SAND IS TO BE USED ONLY IF THE SOIL EXCAVATED IS, IN THE OPINION OF THE RESPONSIBLE OFFICER, UNSUITABLE FOR BEDDING & SCREENING OF THE CABLES.
- ALL OTHER DEPTH OF TRENCH IS TO BE BACKFILLED WITH EXCAVATED MATERIAL UNLESS OTHERWISE DIRECTED BY THE RESPONSIBLE OFFICER. BACKFILL TO BE COMPACTED & GIVEN TIME TO SETTLE BEFORE REINSTATEMENT OF THE ASPHALT.
- SEPARATION BETWEEN LOW VOLTAGE MAINS CABLES SHOULD BE 50mm.
- ALL DIMENSIONS ARE MINIMUM & APPLY WHEN BACKFILL IS COMPLETE.
- CONDUITS MUST BE OF RIGID HEAVY DUTY CLASS, ORANGE PVC TO A STANDARD NO LESS THAN THAT SPECIFIED IN AS/NZS 2063, OR HEAVY OR MEDIUM GALVANIZED STEEL PIPE TO AS1074.
- UNDERGROUND CABLES BURIED IN ANY PART OF A ROAD RESERVE MUST BE IDENTIFIED BY AN ORANGE WARNING TAPE AT LEAST 150mm ABOVE THE UPPERMOST SURFACE OF THE CABLE OR CONDUIT ENCLCSING THE CABLE.



TYPE 'SL1' GALVANISED STEEL POLE ELEVATION
 NOT TO SCALE



01 POLE FRONT VIEW ELEVATION
 NOT TO SCALE



01 POLE SIDE VIEW ELEVATION
 NOT TO SCALE

03 TYPE 'SL1' LUMINAIRE ELEVATIONS
 NOT TO SCALE

REV	DESCRIPTION	DRAWN	APPD	DATE
2	ISSUED FOR CONSTRUCTION	TRS	JPK	07.06.22
1	ISSUED FOR CONSTRUCTION	TRS	JPK	13.04.22

REPRODUCTION OF DRAWINGS
 THE DRAWINGS HAVE BEEN DOCUMENTED IN COLOUR.
 AS SUCH, THE DRAWINGS ARE REQUIRED TO BE PRINTED IN COLOUR.
 FAILURE TO DO SO MAY RESULT IN LOSS OF INFORMATION.
 BLACK & WHITE PRINTING MAY BE USED IF SPECIFIC BLACK & WHITE DOCUMENTS HAVE BEEN OBTAINED FROM WGE.

CITY OF BALLARAT

ARCHITECT/CIENT

LAKE WENDOUREE, BALLARAT, SCHEMATICS & DETAILS -
 STEVE MONEGHETTI TRACK SHEET 1
 PUBLIC LIGHTING

PROJECT TITLE

45683-EL-9-00.dwg

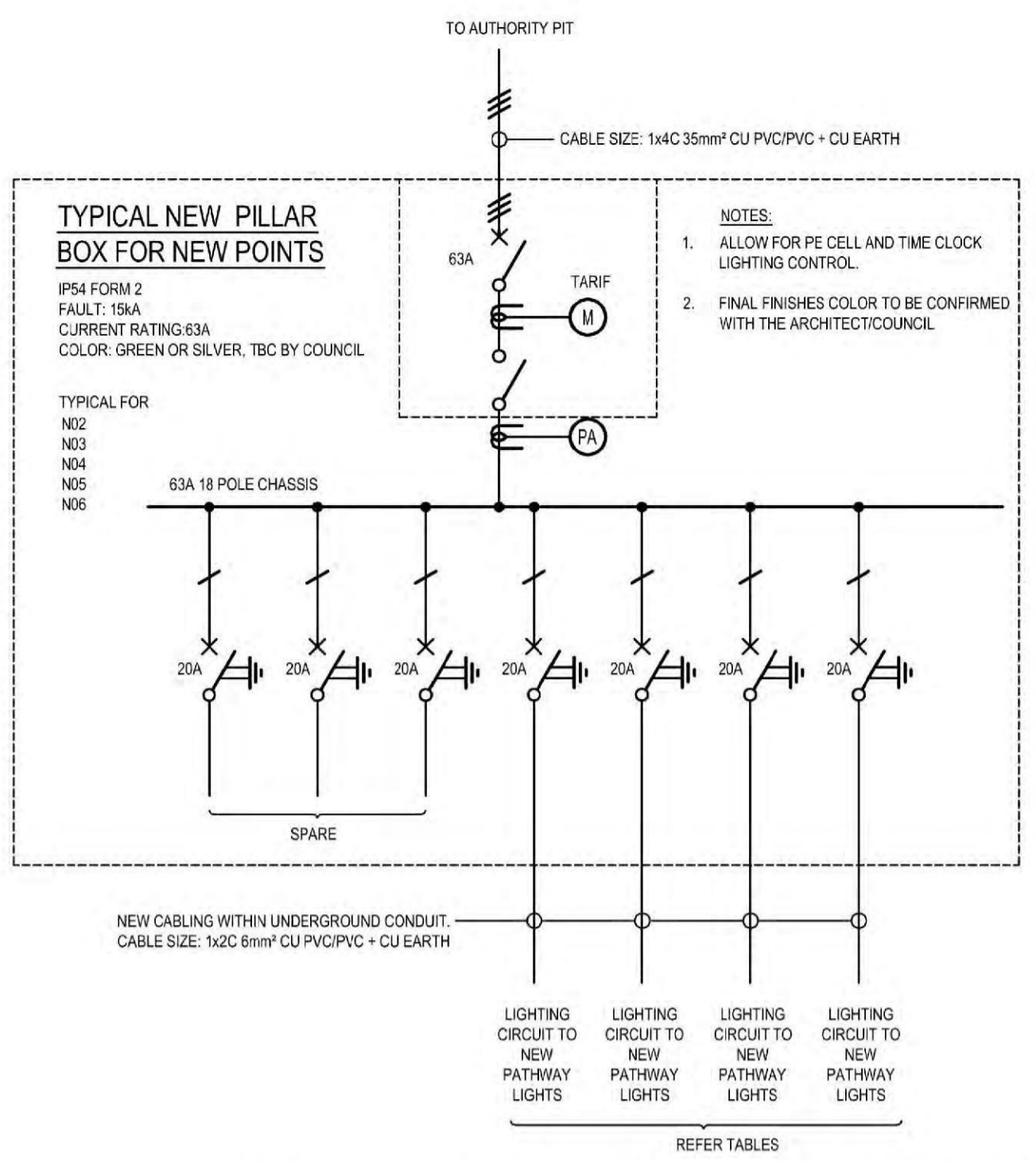
CONSTRUCTION ISSUE

Stantec

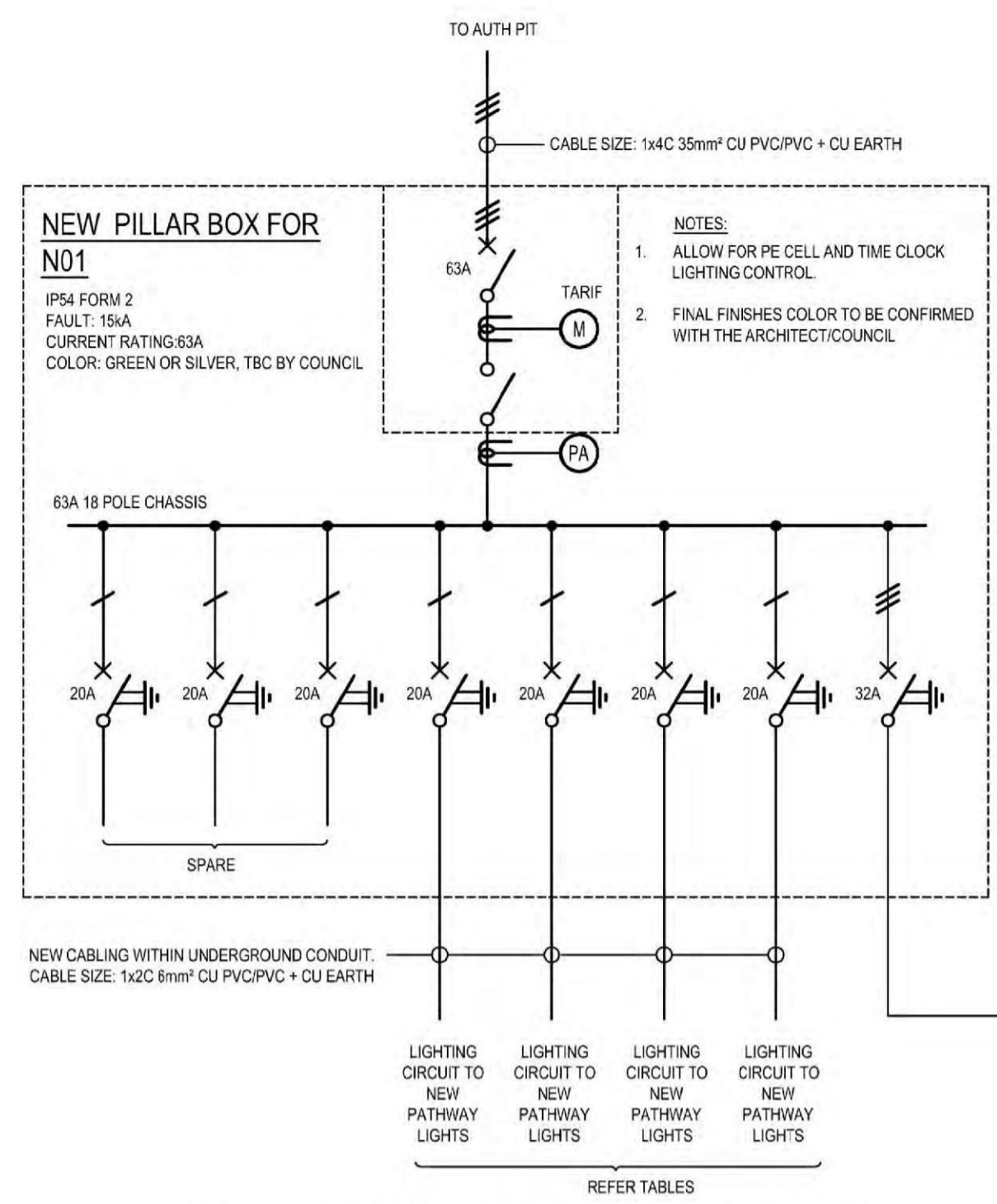
ELECTRICAL SERVICES

NTS	45683	EL-9-00	2
SCALE @ A1	PROJECT No	DRAWING No	REV

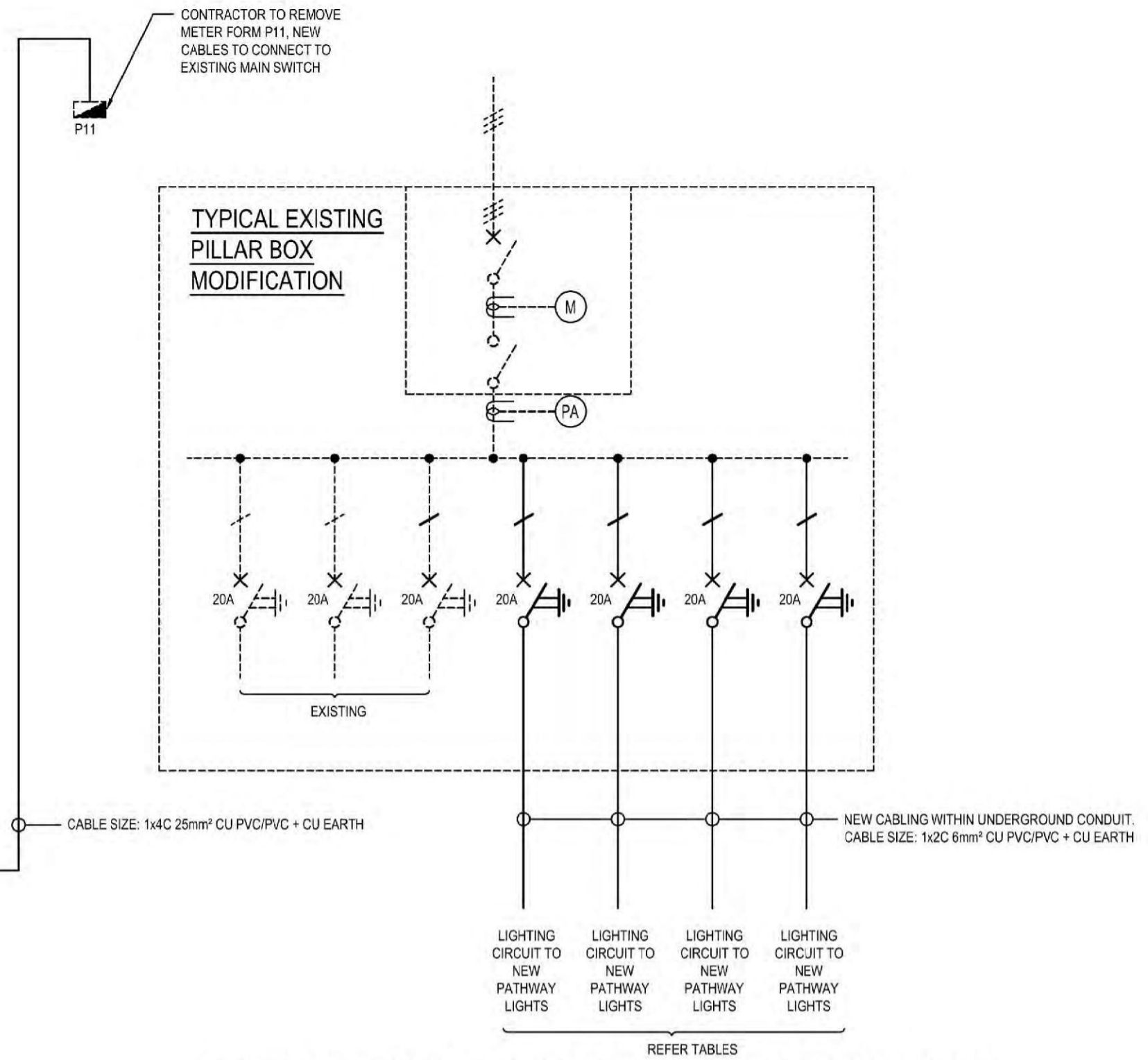
7/06/2022 5:11:57 PM



TYPICAL NEW PILLAR BOX SINGLE LINE DIAGRAM



NEW PILLAR BOX 01 SINGLE LINE DIAGRAM



TYPICAL EXISTING PILLAR BOX MODIFICATION SINGLE LINE DIAGRAM

EXISTING PILLAR BOX/OVERHEAD SUPPLIES WHICH HAVE NOT BEEN USED

DB	POLES	CIRCUIT	DB	POLES	CIRCUIT	DB	POLES	CIRCUIT	DB	POLES	CIRCUIT	DB	POLES	CIRCUIT	DB	POLES	CIRCUIT
N02	51	L1	N03	118	L1	N04	150	L1	N05	169	L1	N06	190	L1			
N02	52	L1	N03	119	L1	N04	151	L1	N05	170	L1	N06	191	L1			
N02	53	L1	N03	120	L1	N04	152	L1	N05	171	L1	N06	192	L1			
N02	54	L1	N03	121	L1	N04	153	L1	N05	172	L1	N06	193	L1			
N02	55	L1	N03	122	L1	N04	154	L1	N05	173	L1	N06	194	L1			
N02	56	L1	N03	123	L1	N04	155	L1	N05	174	L1	N06	195	L1			
N02	57	L2	N03	124	L2	N04	156	L2	N05	175	L2	N06	196	L2			
N02	58	L2	N03	125	L2	N04	157	L2	N05	176	L2	N06	197	L2			
N02	59	L2	N03	126	L2	N04	158	L2	N05	177	L2	N06	198	L2			
N02	60	L2	N03	127	L2	N04	159	L2	N05	178	L2	N06	199	L2			
N02	61	L2	N03	128	L2	N04	160	L2	N05	179	L2	N06	200	L2			
N02	62	L2	N03	129	L2	N04	161	L2	N05	180	L2	N06	201	L2			
N02	63	L2	N03	130	L2	N04	162	L2	N05	181	L2	N06	202	L2			
N02	64	L3	N03	131	L3	N04	163	L3	N05	182	L3	N06	203	L3			
N02	65	L3	N03	132	L3	N04	164	L3	N05	183	L3	N06	204	L3			
N02	66	L3	N03	133	L3	N04	165	L3	N05	184	L3	N06	205	L3			
N02	67	L3	N03	134	L3	N04	166	L3	N05	185	L3	N06	206	L3			
N02	68	L3	N03	135	L3	N04	167	L3	N05	186	L3	N06	207	L3			
N02	68	L3	N03	136	L3	N04	168	L3	N05	187	L3	N06	208	L3			
N02	70	L3	N03	137	L3				N05	188	L3	N06	209	L3			
			N03	138	L3				N05	189	L3	N06	210	L3			

DB	POLES	CIRCUIT
N01	10	L1
N01	11	L1
N01	12	L1
N01	13	L1
N01	14	L1
N01	15	L1
N01	16	L1
N01	17	L1
N01	18	L2
N01	19	L2
N01	20	L2
N01	21	L2
N01	22	L2
N01	22-1	L2

(NOTE 13)

DB	POLES	CIRCUIT	DB	POLES	CIRCUIT	DB	POLES	CIRCUIT	DB	POLES	CIRCUIT
P3	1	L1	P13	27	L1	P16	84	L1	P19.1	105	L1
P3	2	L1	P13	28	L1	P16	85	L1	P19.1	106	L1
P3	3	L1	P13	29	L1	P16	86	L1	P19.1	107	L1
P3	4	L1	P13	30	L1	P16	87	L1	P19.1	108	L1
P3	5	L1	P13	31	L1	P16	88	L2	P19.1	109	L2
P3	6	L1	P13	32	L1	P16	89	L2	P19.1	110	L2
P3	7	L1	P13	33	L1	P16	90	L2	P19.1	111	L2
P3	8	L1	P13	34	L1	P16	91	L2	P19.1	112	L2
P3	219	L2							P19.1	113	L2
P3	220	L2							P19.1	114	L2
P3	221	L2							P19.1	115	L2
P3	222	L2							P19.1	116	L2
P3	223	L2							P19.1	117	L2
P3	224	L2									
P3	211	L3									
P3	212	L3									
P3	213	L3									
P3	214	L3									
P3	215	L3									
P3	216	L3									
P3	217	L3									
P3	218	L3									
P12	23	L14									
P12	24	L14									
P12	25	L14									
P12	26	L14									
P12	27	L14									

P1
P2
P4
P5
P6
P8
P9
P10
P11
P18
P19
P20
P21

REV	DESCRIPTION	DRAWN	APPD	DATE
2	ISSUED FOR CONSTRUCTION	TRS	JPK	07.06.22
1	ISSUED FOR CONSTRUCTION	TRS	JPK	13.04.22

REPRODUCTION OF DRAWINGS
 THE DRAWINGS HAVE BEEN DOCUMENTED IN COLOUR.
 AS SUCH, THE DRAWINGS ARE REQUIRED TO BE PRINTED IN COLOUR.
 FAILURE TO DO SO MAY RESULT IN LOSS OF INFORMATION.
 BLACK & WHITE PRINTING MAY BE USED IF SPECIFIC BLACK & WHITE DOCUMENTS HAVE BEEN OBTAINED FROM WGE.

LAKE WENDOUREE, BALLARAT, SCHEMATICS & DETAILS -
 STEVE MONEGHETTI TRACK SHEET 2
 PUBLIC LIGHTING

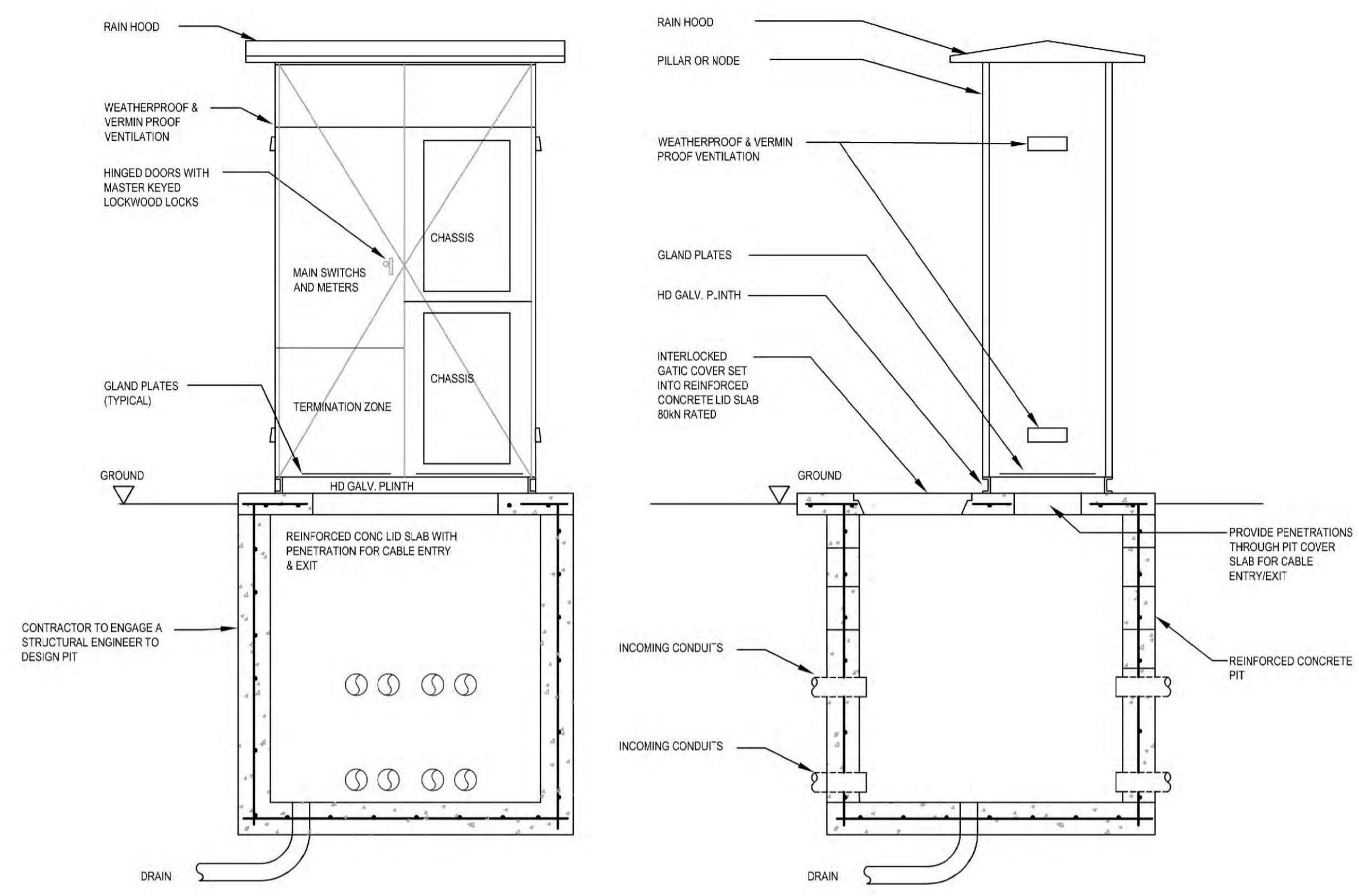
PROJECT: _____ TITLE: _____

CONSTRUCTION ISSUE
 ELECTRICAL SERVICES

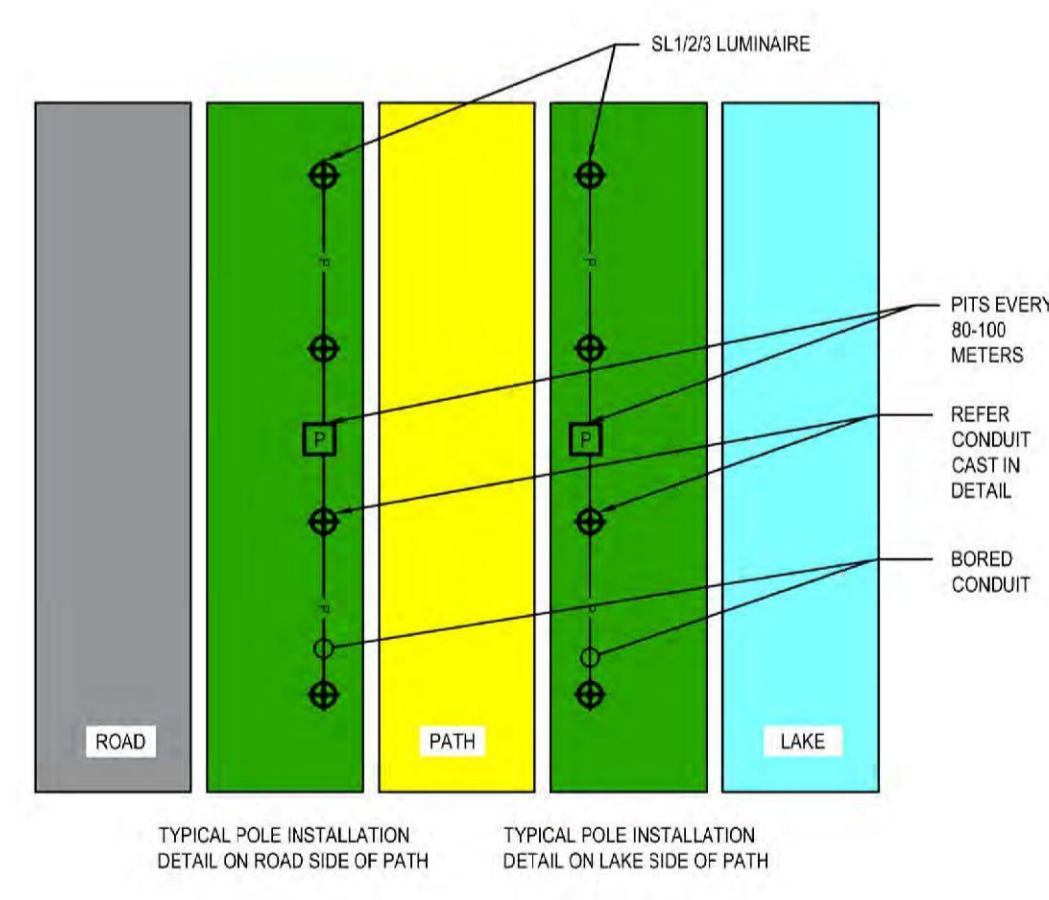
NTS	45683	EL-9-01	2
SCALE @ A1	PROJECT No	DRAWING No	REV

UNDERGROUND SERVICES NOTES

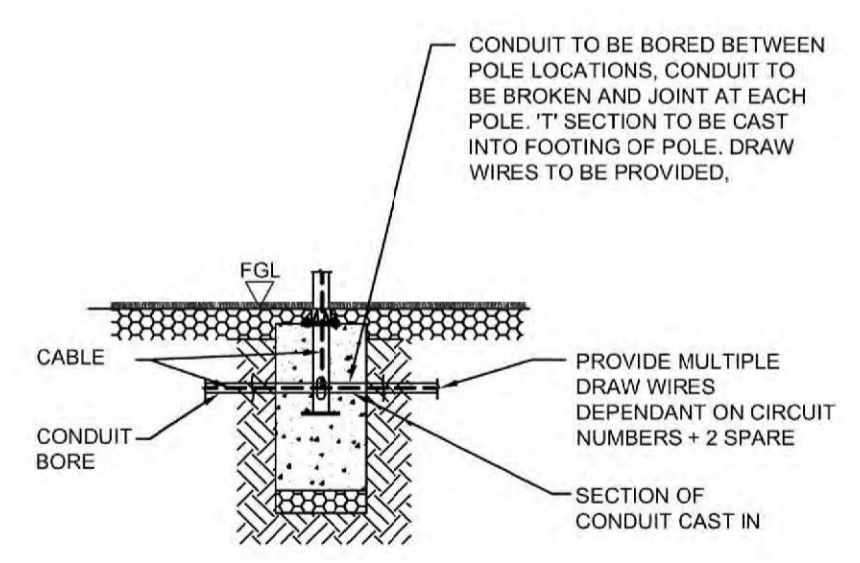
- SAND IS TO BE USED ONLY IF THE SOIL EXCAVATED IS, IN THE OPINION OF THE RESPONSIBLE OFFICER, UNSUITABLE FOR BEDDING & SCREENING OF THE CABLES.
- ALL OTHER DEPTH OF TRENCH IS TO BE BACKFILLED WITH EXCAVATED MATERIAL UNLESS OTHERWISE DIRECTED BY THE RESPONSIBLE OFFICER. BACKFILL TO BE COMPACTED & GIVEN TIME TO SETTLE BEFORE REINSTATEMENT OF THE ASPHALT.
- SEPARATION BETWEEN LOW VOLTAGE MAINS CABLES SHOULD BE 50mm.
- ALL DIMENSIONS ARE MINIMUM & APPLY WHEN BACKFILL IS COMPLETE.
- CONDUITS MUST BE OF RIGID HEAVY DUTY CLASS, ORANGE PVC TO A STANDARD NO LESS THAN THAT SPECIFIED IN AS/NZS 2063, OR HEAVY OR MEDIUM GALVANIZED STEEL PIPE TO AS1074.
- UNDERGROUND CABLES BURIED IN ANY PART OF A ROAD RESERVE MUST BE IDENTIFIED BY AN ORANGE WARNING TAPE AT LEAST 150mm ABOVE THE UPPERMOST SURFACE OF THE CABLE OR CONDUIT ENCLDSING THE CABLE.
- CONTRACTOR SHALL CARRY OUT THE DISCRIMINATION STUDY. THE STUDY SHALL BE SIGNED AND APPROVED BY THE TENDERER.
- CONTRACTOR SHALL ALLOW FOR ALL TEMPORARY DISCONNECTION AND RECONNECTION WORKS TO ENABLE NEW SUPPLY WORKS.
- PRIOR TO COMMENCEMENT OF DEMOLITION IN ANY AREA, ISOLATE AND MAKE SAFE THE EXISTING ELECTRICAL AND FIRE DEVICES. REMOVE AND INSTALLATION AND CLEARLY IDENTIFY EQUIPMENT TO BE RETAINED.
- THE CONTRACTOR SHALL BE RESPONSIBLE FOR CONDUCTING A THOROUGH SITE SURVEY PRIOR TO SUBMITTING TENDER IN ORDER TO GAIN A FULL UNDERSTANDING OF THE EXISTING CABLE PATHWAYS AND THE SCOPE OF WORK ASSOCIATED WITH MODIFYING EXISTING INFRASTRUCTURE. DISCREPANCIES BETWEEN THIS SET OF DOCUMENTS AND SITE SURVEYS SHALL BE BOUGHT TO THE ATTENTION OF THE SUPERINTENDENT AND THE CONSULTING ENGINEER PRIOR TO SUBMITTING A TENDER PRICE. VARIATIONS WILL NOT BE ACCEPTED SHOULD THIS CONDITION NOT BE ADHERED TO BY THE TENDERER.
- SEE SPECIFICATION FOR FURTHER DETAILED REQUIREMENTS OF SWITCHGEARDS. ENSURE ALL REQUIRED DETAILS TO PROVE COMPLETE COMPLIANCE IS LISTED ON SHOP DRAWINGS.
- PROVIDE LABELING TO ALIGN WITH EXISTING NAMING CONVENTION. ALL LABELS SHALL BE SCREW FIXED. ADHESIVE ONLY LABELING WILL NOT BE ACCEPTED.
- ALL EQUIPMENT AND ACCESSORIES SHALL BE NEW UNLESS NOTED OTHERWISE.
- THE ELECTRICAL EQUIPMENT SHOWN ON THE DRAWINGS ARE NOT TO SCALE. FINAL POSITION OF ALL EQUIPMENT TO BE DETERMINED ON SITE PRIOR TO INSTALLATION.
- IDENTIFY AND BRING TO THE ATTENTION OF THE SUPERINTENDENT ANY DEFECTS AND NONCOMPLIANCE ITEMS NOTED DURING THE TENDER PERIOD WITH THE EXISTING ELECTRICAL INSTALLATION.
- NOTE THAT CABLE SIZE FOR FINAL CIRCUITS CAN BE REDUCED/INCREASED IN SIZE WHERE THE CONTRACTOR DEEMS THE EQUIPMENT LOAD, CABLE DERATING, VOLTAGE DROP, EARTH LOOP IMPEDENCE ETC WILL NOT CAUSE NONCOMPLIANCE WITH AS3000.
- CARRY OUT CABLE TESTING AND CONFIRM THE SIZE, INTEGRITY AND COMPLIANCE WITH AS 3000. PROVIDE TEST RESULTS AND CABLE SIZE TO ENGINEER FOR REVIEW.



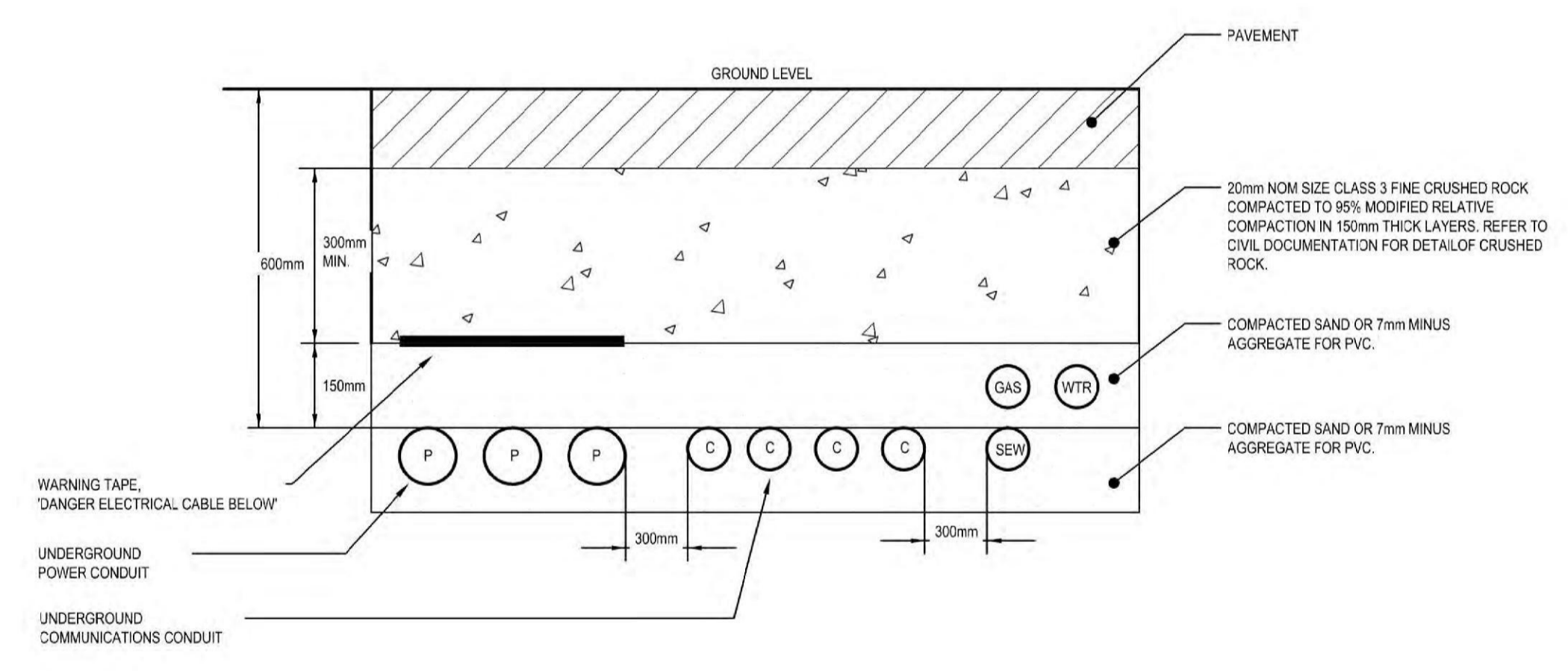
INDICATIVE PILLAR INSTALLATION
 N.T.S



TYPICAL POLE LOCATIONS AND CONDUIT DETAIL



CONDUIT CAST IN DETAIL
 NOT TO SCALE



TYPICAL TRENCH DETAIL
 THIS IS A TYPICAL DETAIL AND CLEARANCES ARE INDICATED.
 N.T.S.

REV	DESCRIPTION	DRAWN	APPD	DATE
2	ISSUED FOR CONSTRUCTION	TRS	JPK	07.06.22
1	ISSUED FOR CONSTRUCTION	TRS	JPK	13.04.22

REPRODUCTION OF DRAWINGS
 THE DRAWINGS HAVE BEEN DOCUMENTED IN COLOUR. AS SUCH, THE DRAWINGS ARE REQUIRED TO BE PRINTED IN COLOUR. FAILURE TO DO SO MAY RESULT IN LOSS OF INFORMATION. BLACK & WHITE PRINTING MAY BE USED IF SPECIFIC BLACK & WHITE DOCUMENTS HAVE BEEN OBTAINED FROM WGE.

CITY OF BALLARAT

ARCHITECT/CIENT

LAKE WENDOUREE, BALLARAT, SCHEMATICS & DETAILS - STEVE MONEGHETTI TRACK SHEET 3 PUBLIC LIGHTING

PROJECT TITLE

45683-EL-9-02.dwg

CONSTRUCTION ISSUE

Stantec

ELECTRICAL SERVICES

NTS	45683	EL-9-02	2
SCALE @ A1	PROJECT No	DRAWING No	REV

7/06/2022 5:14:31 PM